



California State Polytechnic University, Pomona • 3801 West Temple Avenue, Pomona, CA 91768  
909.869.2216 • fax 909.869.2099 • www.cpp.edu

Huntley College of Agriculture  
Animal & Veterinary Sciences

## *Department of Animal and Veterinary Sciences*

### **Equine Studies Minor: 18 units**

The courses in the Equine Studies Minor develop a foundation in the basic discipline of equine science/management and is designed to enrich students' general equine studies and provide additional hands-on learning experiences. Courses are selected by the student to emphasize the specialized areas of interest in equine management principles, equine science, genetics, breeding, nutrition or physiology. This is a multiple disciplinary minor from the courses offered in Plant Science, Agriculture Business Management and Animal & Veterinary Science programs.

The equine studies minor is designed to provide a strong background with supporting course work in the sciences, humanities and general education. A minor in equine studies offers students diversity in their educational program while preparing them for employment or additional educational endeavors involving horsemanship. A minor in equine studies can accompany essentially any major offered at Cal Poly Pomona.

The United States horse industry contributes significantly to the American economy. The horse industry contributes approximately \$50 billion in direct economic impacts to the United States economy on an annual basis. Considering indirect and induced spending, the horse industry annually generates approximately \$122 billion for the US economy and the total estimated number of horses in the US is 7.2 million. There are horses in every state in the US; California, Texas and Florida lead the way in both horse ownership and economic impact. Texas has nearly three quarters of a million horses (767,100) and leads the nation with the most horses of any state and California comes in second with 534,500 horses and significantly more racetracks than Texas. For this reason, California leads all states in horse related job creation and economic impact, directly contributing over \$4.5 billion to the state's economy, along with 77,703 jobs. Equine Studies Minor students will be qualified to become involved in many diverse occupations in the horse industry. These include such varied activities as training horses, managerial support, sales of pharmaceuticals and livestock products, and other agribusiness professions.

Horses used for the teaching are provided by the W.K. Kellogg Arabian Horse Center



## ***Required Courses***

**AVS 1125/L Equine Management Science (3/1)**

**ABM 3290 Equine Enterprise Management (3)**

Prerequisite(s): ABM 3280 and AVS 1125/1125L or Instructor Consent

### ***Select a minimum of 11 units from the following***

**AVS 2990 Special Topics for Lower Division Students (1)\***

**AVS 3555 Equine Nutrition (3)**

Prerequisite(s): AVS 2101; and AVS 1125/1125L

**AVS 3365/L Equine Herd Health (3/1)**

Prerequisite(s): AVS 1125/1125L

**AVS 3450 Equine Genetic and Breeding Principles (3)**

Prerequisite(s): BIO 1150, BIO 1210; BIO 1150L, BIO 1210L; AVS 1125/1125L

**AVS 4350 Equine Exercise Physiology (3)**

Prerequisite(s): AVS 3350/3350L

**AVS 4434 Equine Reproduction (3)**

**AVS 4990 Special Topics for Upper Division Students (1)\***

**ABM 3040 Food and Agribusiness Marketing (3)**

Prerequisite(s): EC 2201, or Instructor Consent

**ABM 3090 Promotion and Advertising for Agribusiness (3)**

Prerequisite(s): ABM 3040 or Instructor Consent

**ABM 3280 Agribusiness Enterprise Management (3)**

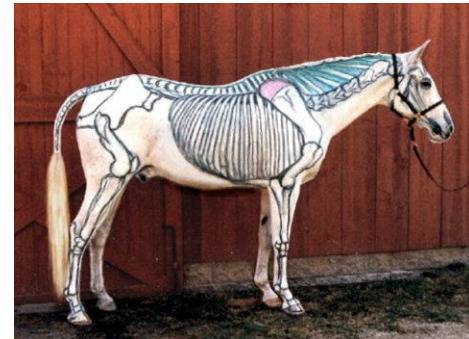
Prerequisite(s): ABM 2010, ABM 2240, or Instructor Consent

**ABM 4020 Agribusiness Personnel Management (3)**

**ABM 4300 Equine Appraisal and Evaluation (3)**

**PLT 2230/L Forage and Pasture Crops (2/1)**

\*Special Topics area of study will vary each semester and include horsemanship lab courses which will cover: Foal Handling, Yearling Handling/Training, 2-Year Old Handling/Training and Introductory Horse Judging



### **Contact Information**

Holly M. Greene, 909.869.2156, [hmgreene@cpp.edu](mailto:hmgreene@cpp.edu)

Cord Brundage, 909.869.2078, [cmbrundage@cpp.edu](mailto:cmbrundage@cpp.edu)