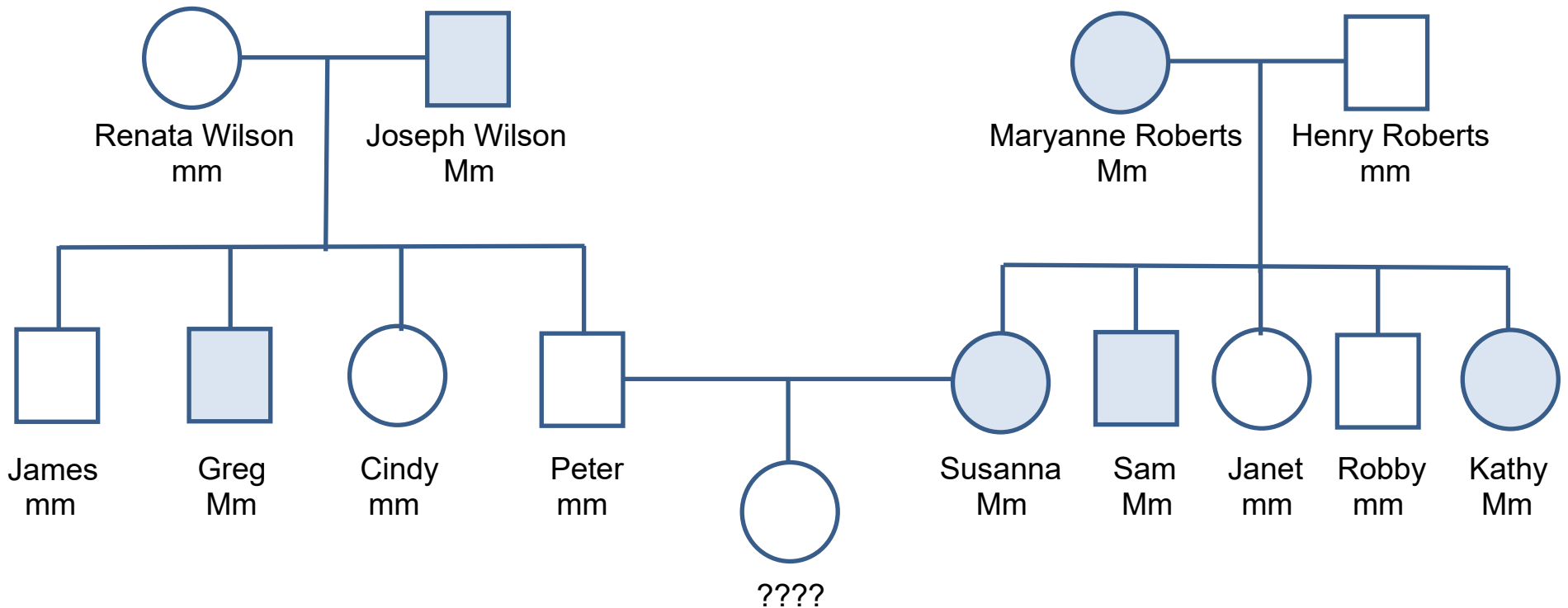


### The Wilson Family Pedigree (Teacher Master)



Shade the circle or square of any family member who has Marfan syndrome. Marfan syndrome is caused by a **dominant** allele (M), so anyone who doesn't have it must have two **recessive** alleles (mm). Write mm below the name of any family member who does **not** have Marfan syndrome. Then use this information to figure out the possible allele combinations of other family members. If more than one allele combination is possible for an individual, write both combinations under that person's name.