



**California State Polytechnic University, Pomona
Degree Curriculum Sheet**

Plan (Major) **ELECTRONICS & COMPUTER ENGINEERING TECHNOLOGY**
Subplan/Option _____

Catalog Year **2011-2012**
Minimum Units Required **198**

Name _____
Student ID _____

Evaluator _____
GWT Satisfied _____ Yes _____ No _____

Required Core Courses		
Course		Units
<i>Students in this major are expected to maintain a GPA of at least 2.00 in all core courses.</i>		
DC Circuit Analysis	ETE 102/102L	3/1
AC Circuit Analysis	ETE 103/103L	3/1
Semiconductor Devices & Circuits	ETE 204/204L	3/1
Electrical Circuit Analysis	ETE 210/210L	3/1
Applied C Programming	ETT 215/215L	3/1
Introduction to Digital Logic	ETE 230/230L	3/1
Electronic Mfg. & PCB Fabrication	ETE 272/272L	3/1
Industrial Electronics	ETE 280/280L	3/1
Electronic Devices & Circuits	ETE 305/305L	3/1
Applied Network Analysis	ETE 310/310L	3/1
Advanced Programming with C++	ETE 312/312L	3/1
Digital Logic Systems	ETE 315/315L	3/1
Communication Systems	ETE 335/335L	3/1
Microcontroller Systems & Appl	ETE 344/344L	3/1
Feedback Systems Technology	ETE 350/350L	3/1
Tech Comm & Proj Mgmt for ET	ETE 401/401L	3/1
Electronic Test Instrumentation with LabView	ETE 420/420L	3/1
Data Communication and Networking	ETE 442/442L	3/1
Senior Project I	ETT 461	2
Senior Project II	ETT 462	2
Total Units		76

Required Support Courses		
Course		Units
General Chemistry	CHM 121	3
General Chemistry Lab (B3)	CHM 121L	1
Computer Application for ET	ETT 101/101L	2/1
Applied Statics	ETT 210	3
Applied Dynamics	ETT 211	3
Materials Science for ET	ETT 217	3
Technical Calculus I (B4)	MAT 130	4
Technical Calculus II	MAT 131	4
Technical Calculus III	MAT 132	4
College Physics (B1, B3)	PHY 121/121L	3/1
College Physics	PHY 122/122L	3/1
College Physics	PHY 123/123L	3/1
Total Units		40

Elective Support Courses		
Course		Units
CAD Elective (MFE 126/126L typical)		3
Technology Electives**	ET XXX	20
**May include College Trigonometry Consult Department Advisor		
Total Units		23

General Education Requirements		IGE (G.E. Alternative)
Area	Units	
Area A Communication & Critical Thinking	12	IGE 120 4 IGE 121 4 IGE 122 4 IGE 220 4 IGE 221 4 IGE 222 4 IGE 223 4 IGE 224 4
1 Oral Communication		Area A1 4 Area A3 4 Area B 16 Area C1, C2, or C3 4 Area C4 8 Area D4 8
2 Written Communication		
3 Critical Thinking		
Area B Mathematics & Natural Sciences	16	
<i>Select at least one lab course from sub-area 1 or 2.</i>		
1 Physical Science		
2 Biological Science		
3 Laboratory Activity		
4 Math/Quantitative Reasoning		
5 Science & Technology Synthesis		
Area C Humanities	16	
1 Visual and Performing Arts		
2 Philosophy and Civilization		
3 Literature and Foreign Language		
4 Humanities Synthesis		
Area D Social Sciences	20	See University Catalog for information on how IGE meets G.E. requirements.
1 U.S. History, Constitution, American Ideals		
2 History, Economics and Political Science		
3 Sociology, Anthropology, Ethnic & Gender Studies		
4 Social Science Synthesis		
Area E Lifelong Understanding & Self Development	4	
Total Units	68	

American Institutions Courses that satisfy this requirement may also satisfy G.E. Area D1	8
---	---

American Cultural Perspectives Requirement Refer to catalog for list of courses that satisfy this requirement. Course may also satisfy major, minor, GE, or unrestricted elective requirements.	4
---	---

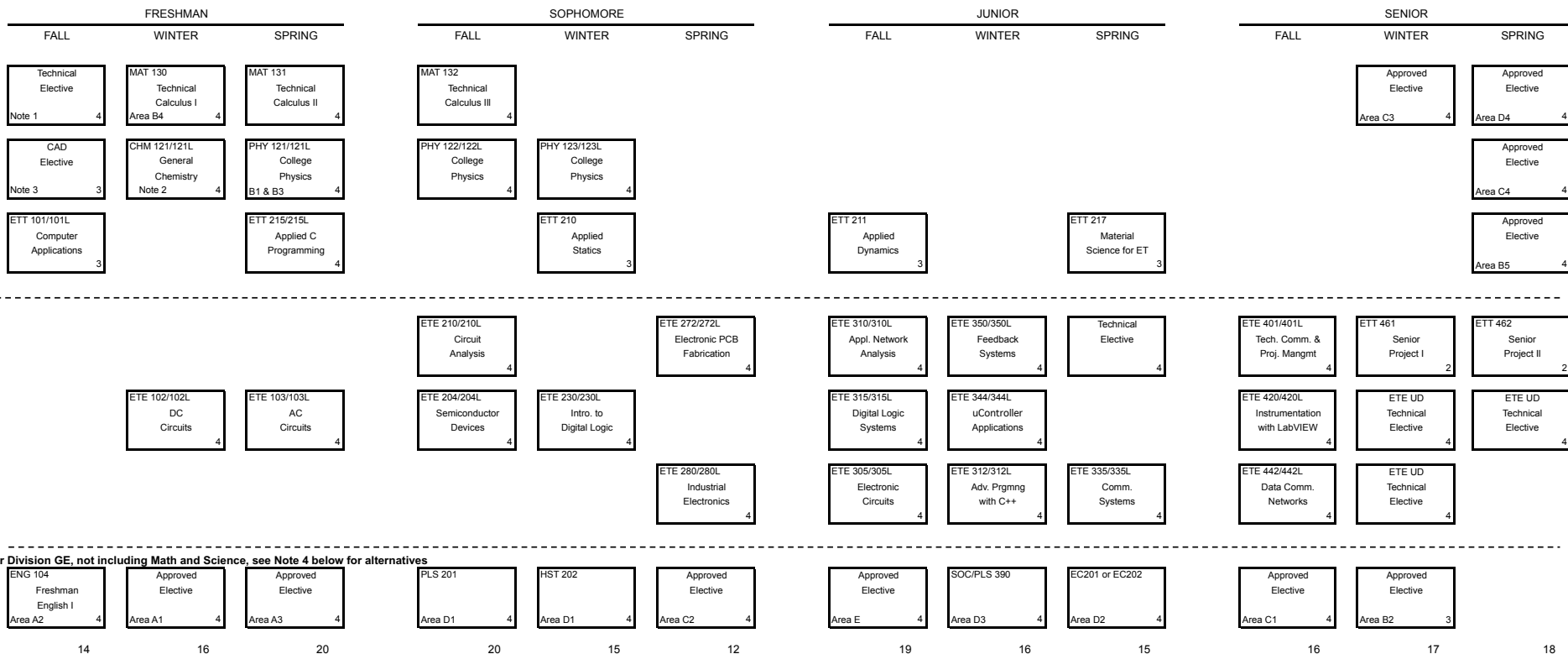
The following required support courses should be taken to satisfy the indicated GE Requirements to achieve the minimum units to degree listed at the top of this sheet.		
Course		GE Area
College Physics	PHY 121/121L	B1,B3
and General Chemistry Lab	CHM 121L	B3
Technical Calculus	MAT 130	B4
The remaining GE requirements may be satisfied by any course approved for that area.		

No more than 105 community college quarter units or 36 extension credit quarter units may be applied toward a Bachelor's degree.
A minimum 2.0 cumulative GPA is required in core (including option) courses, Cal Poly Pomona courses, and overall work completed in order to receive a degree in this major.

CALIFORNIA STATE POLYTECHNIC UNIVERSITY, POMONA
ELECTRONICS AND COMPUTER ENGINEERING TECHNOLOGY
CURRICULUM FLOWSHEET
2011-12

NAME: _____

Academic Plan: ETE



Notes

1. May include College Trigonometry (MAT 106 at CPP) if taken before Calculus
2. Lab course used to satisfy GE Area B3.
3. CAD elective (Fall Freshman year) typically MFE126/L
4. An alternative GE pattern from that listed here, the Interdisciplinary Education Program (IGE), for partial fulfillment of GE Areas A, C and D is available for students in this major.
 Although the IGE program tends to fit best for freshmen entering Cal Poly Pomona it is available to all students, see the University catalog or your advisor for more information.

Revised 12/09/2010

Total Units 198

This flowchart shows the suggested order of courses to complete the degree Bachelor of Science in Electronics and Computer Engineering Technology in 4 years: 12 quarters not including summer quarters. The flowchart is not a schedule however and when specific courses are offered (i.e. what quarter in a given year) depends on many factors including enrollment, faculty availability, on-going curricular changes and budgetary constraints. Many courses (i.e ETT210 and GE) are generally taught every quarter or twice a year and can be taken whenever a student has completed the prerequisite coursework. Most major courses (i.e ETE_XXX) are taught once a year. If you have concerns about when a course is to be offered next or any other course related questions you should contact your department advisor or the ET office (909-869-2492 or etdept@csupomona.edu).