

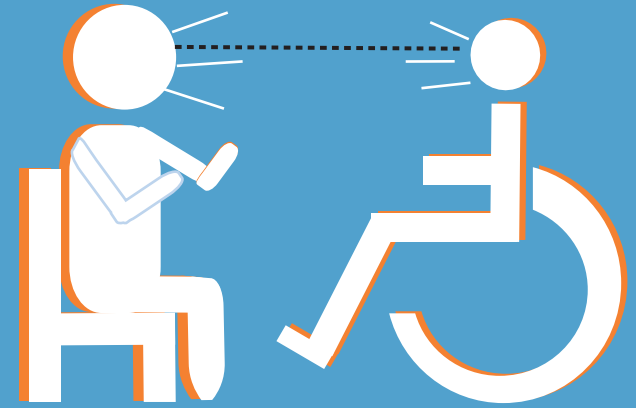
DISABILITY ETIQUETTE

DON'T LEAN ON A
PERSONS WHEELCHAIR.



THE CHAIR IS AN EXTENSION OF THE PERSON USING IT.

DON'T TALK DOWN TO A
PERSON IN A WHEELCHAIR.



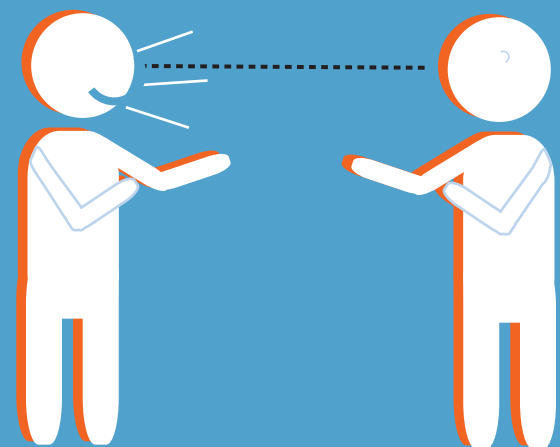
TALK TO THE PERSON AT THEIR EYE LEVEL.*
[WHEN APPLICABLE]

DON'T PUT BAGS OR OTHER ITEMS ON A
PERSONS WHEELCHAIR



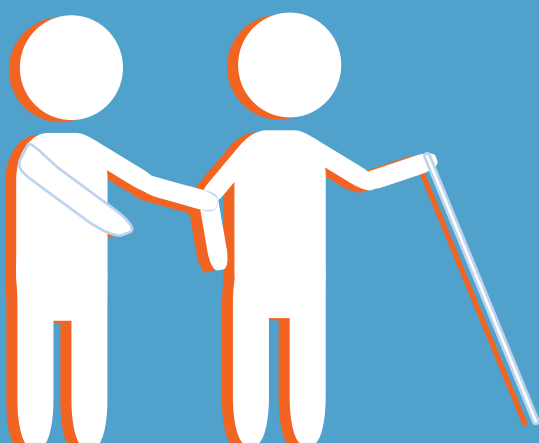
WITHOUT THE CONSENT OF THE PERSON ON THE WHEELCHAIR.

NOT ALL DEAF PEOPLE CAN READ LIPS



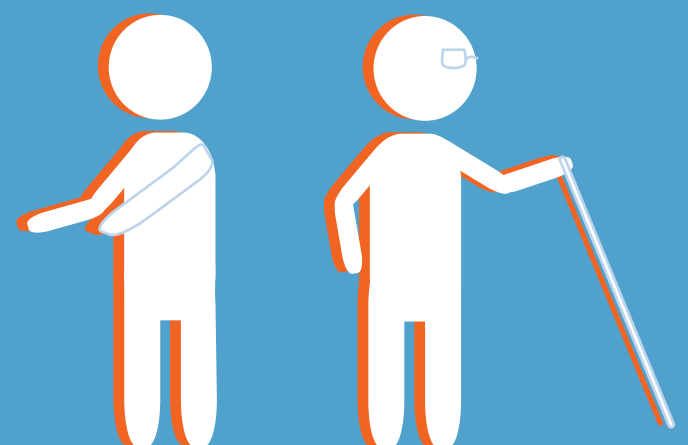
WRITE DOWN ON A PIECE OF PAPER HOW
THE PERSON WISHES TO COMMUNICATE.

DON'T START LEADING A PERSON WITH LOW VISION
BY THEIR ARM



IT IS EASIER IF THE PERSON GRABS THE
OTHER PERSONS ARM FOR DIRECTION.

DON'T JUST LEAVE AFTER GUIDING A PERSON WITH
LOW VISION TO THEIR DESTINATION



ANNOUNCE YOUR DEPARTURE TO THEM.*
[DISCREETLY AS TO NOT BOTHER THEM OR ANYONE ELSE]