

CAL POLY POMONA



TECHNOLOGY & OPERATIONS MANAGEMENT

ABOUT US

The Technology and Operations Management and E-Business Department at Cal Poly Pomona operates under the College of Business Administration. We are committed to providing students with the best business education and support student's professional growth. The TOM/EBZ Department newsletter will highlight events, professional development opportunities, and accomplishments.

FOLLOW US ON:



WHAT'S IN THIS NEWSLETTER?

Department Highlights

SCHOLARSHIPS
APICS/DELOITTE CASE COMPETITION
NEW BLOCK CHAIN CLASS
GRADUATE PROGRAMS

Faculty Activity

SCOTT LITTLE - TOM 3020 CLASS PROJECT

Fall 2020 Highlights

SINGELYN CENTER FOR INNOVATIVE
ANALYTICS: GIS DAY

Operations Management Society

SHERWIN-WILLIAMS GUEST SPEAKER
MEET AND MATCH EVENT

Council of Supply Chain Management Professionals Club

ASCM CASE COMPETITION
SQL WORKSHOP

Job & Internship Postings

Spring 2021 Upcoming Events

Industry & Alumni Partnerships

GETTING INVOLVED
SPONSOR DEPARTMENT ACTIVITIES
CONTACT US

Department Highlights

Scholarships

- Check the [TOM website](#) for upcoming 2021 scholarships announcements

APICS/Deloitte Case Competition

- Two teams advanced to the next level for competition!

New Block Chain Class

- New course coming soon: TOM 4650 Introduction to Block Chain

Graduate Programs

MSBA

- The program cohort two continues accepting applications – for details, contact the Program Co-Director, Dr. Yuanjie He at he@cpp.edu

MS Digital Supply Chain Management

- Program is under final university and CSU approval

Faculty Activity

Scott Little, PhD
Adjunct Instructor
TOM 3020 Class Project

The TOM 3020 students are

required to create a class project based on their labs using the Excel statistical data analysis tool. This collaboration allows the students to be creative, tell a story, and apply their knowledge to a hypothetical but realistic problem.

This Fall 2020 Semester, the students created a story on Best Buy Black Friday online shopping, one that is relevant to our current situation. This project consisted of data and information gathered from previous assignments. The assignments are Lab 01 Hypothesis Testing, Lab 02 Chi-Squared Analysis, Lab 03 Simple Linear Regression, Lab 04 Multiple Regression, and Lab 05 Analysis of Variance (ANOVA).

To view the complete summary and project, visit the [TOM/EBZ News and Events webpage](#).

Lab 3 Practice Simple Regression Lab

Example: Best Buy ran TikTok ads for their computers for 9 consecutive months during March through November.

Null hypothesis: There was no significant change in computer sales after the ad run.

Alternative hypothesis: There was significant change in computer sales after the ad run.

television	Computers
5	20
4	15
6	20
2	18
6	25
5	23
4	19
2	11
3	21

SUMMARY OUTPUT

df	SS	MS	F	Significance F
Regression	1	64.44183007	64.44183007	6.059242871
Residual	7	74.44705882	10.63529832	0.043366497
Total	8	138.8888889		

Regression Statistics

Multiple R	0.681165838
R Square	0.463981176
Adjusted R Square	0.387407059
Standard Error	3.261179866
Observations	9

ANOVA

df	SS	MS	F	Significance F	Upper 95.0%	Lower 95.0%	
Regression	1	64.44183007	64.44183007	6.059242871	0.043366497	11.51764706	1.847058824
Residual	7	74.44705882	10.63529832	0.043366497	3.781345336	19.21177958	0.750683284
Total	8	138.8888889					

Confidence Interval

df	SS	MS	F	Significance F	Upper 95.0%	Lower 95.0%	
Regression	1	64.44183007	64.44183007	6.059242871	0.043366497	11.51764706	1.847058824
Residual	7	74.44705882	10.63529832	0.043366497	3.781345336	19.21177958	0.750683284
Total	8	138.8888889					

Intercept

df	SS	MS	F	Significance F	Upper 95.0%	Lower 95.0%	
Regression	1	64.44183007	64.44183007	6.059242871	0.043366497	11.51764706	1.847058824
Residual	7	74.44705882	10.63529832	0.043366497	3.781345336	19.21177958	0.750683284
Total	8	138.8888889					

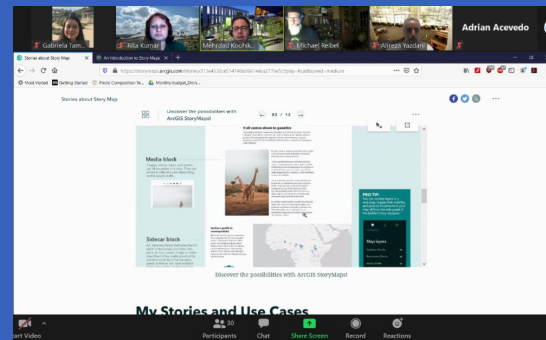
TikTok Ads (Hundreds)

df	SS	MS	F	Significance F	Upper 95.0%	Lower 95.0%	
Regression	1	64.44183007	64.44183007	6.059242871	0.043366497	11.51764706	1.847058824
Residual	7	74.44705882	10.63529832	0.043366497	3.781345336	19.21177958	0.750683284
Total	8	138.8888889					

Fall 2020 Highlights

Singelyn Center for Innovative Analytics: GIS Day

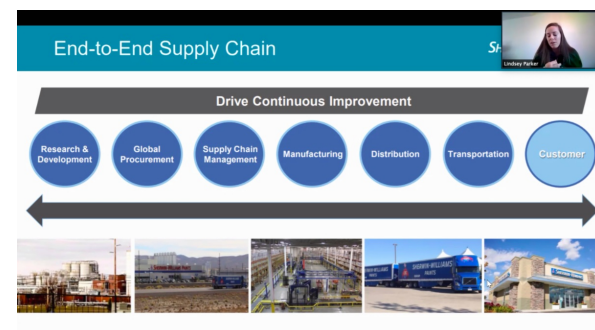
The Singelyn Center for Innovative Analytics celebrated GIS day on November 18th. Guest speakers included Dr. Kostas Alexandridis, GIS Analyst, Orange County Survey Geospatial Services, and Ms. Jian Lange, Senior Product Manager (Spatial Analysis), ESRI.



Operations Management Society Club

SHERWIN-WILLIAMS

Talent Acquisition Samantha and Lindsey alongside several Sherwin-Williams representatives shared their career experiences related to its Operations. Sherwin-Williams is a leading paint, and related accessories manufacturer in the United States. You can find many of their popular products like Valspar, Purdy, and MinWax. It currently operates 130 distribution centers, and more than 4000 retail locations. Sherwin-Williams has several opportunities such as their Accelerated Development Program, Operations Leadership Development program and even their Sales Leadership Development program everyone can find on their career website jobsearch.sherwin.com.



MEET & MATCH EVENT

On November 20, 2020 Operations Management Society held their second annual recruiting event known as the Meet & Match. TOM and EBZ students were given the chance to network, connect, and learn more about supply chain and operations career opportunities

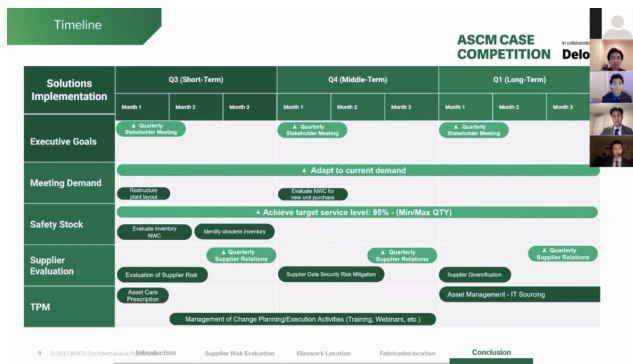
offered by our participating partners. Companies that joined our event this year included Target, UPS, Niagara Bottling, Central Garden & Pet, Ross, DHL Logistics, ENC Rev Group, and Farmers Insurance Group. With our event this year being virtual, the OMS e-board attempted to keep the structure, logistics, and spirit of the event as similar as it was in-person. Students were given the opportunity to speak with and learn more about each respective company in a personal format. OMS members felt like the event was advantageous as they had direct contact with recruiting business partners, to help them secure summer internships or possible full-time jobs after graduation. We look forward to working with these companies again in the future for similar events, and hope our members were able to secure positions with these market leaders!



Follow us on **Instagram!**
@cppoms

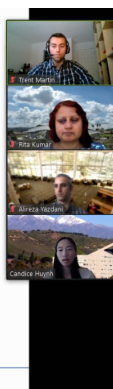
ASCM Case Competition

This event served as a fantastic opportunity to learn about the most recent consulting competition our Cal Poly students have been participating in. On November 20th, three teams from this year shared their live presentations showcasing their month-long work. Last year's team who placed 2nd in the western region served as the judge board to provide feedback and stories from their own experience. This event brought together all those who competed and revealed the positive and competitive environment that anyone can be a part of.



SQL

- Data Definition Language (DDL)
 - Create/alter/delete tables and their attributes
- Data Manipulation Language (DML)
 - Query one or more tables
 - Insert/delete/modify tuples in tables



SQL WORKSHOP

Dr. Candice Huynh joined CSCMP CPP for its SQL Workshop on November 19th. She discussed the uses of this query language and how an understanding of it can benefit those pursuing careers in analytics and data. Dr. Huynh recommends [w3schools](#) to practice SQL.

CALIFORNIA STATE POLYTECHNIC UNIVERSITY, POMONA
COLLEGE OF BUSINESS ADMINISTRATION



Follow us on **Instagram!**
[@cscmpcpp](#)

JOB / INTERNSHIP OPPORTUNITIES

Job post links are time-sensitive and will be removed once the position is filled.
Apply ASAP if interested!

- Paramount Pictures - [Data Science Analyst](#) - Los Angeles
- NASA - [Business Analyst II](#) - Pasadena, CA
- Niagara Bottling - [Logistics Operations Associate II](#) - Diamond Bar, CA
- UCLA Health - [Facilities Operations Analyst](#) - Los Angeles, CA
- Applied Medical - [Operations Analyst](#) - Rancho Santa Margarita, CA
- Markwins Beauty Brands Global - [Demand Planner](#) - Industry, CA
- Home Depot - [DC Operations Manager](#) - Los Angeles, CA
- SpaceX - [Supply Chain Analyst](#) - Hawthorne, CA
- Tetra Tech - [Project Assistant](#) - Long Beach, CA
- Ross - [Assistant Buyer I](#) - Los Angeles, CA
- Southern California Edison - [Supply Chain Associate](#) - Rosemead, CA
- MedMen - [Procurement Specialist](#) - Culver City, CA
- Ametek - [Quality Inspector](#) - Rosemead, CA
- Public Storage - [Procurement Specialist](#) - Glendale, CA
- Behr Paint Company - [Purchasing Manager](#) - Santa Ana, CA
- Pacsun - [Merchandise Planner](#) - Anaheim, CA
- Glamnetic - [Product Development Coordinator](#) - Los Angeles, CA
- Virgin Hyperloop - [Quality Assurance Analyst](#) - Los Angeles, CA
- Snap Inc. - [Ad Product Quality Analyst](#) - Los Angeles, CA
- UPS - [Warehouse Associate II](#) - Bloomington, CA
- Red Bull - [Business Operations Analyst](#) - Santa Monica, CA
- Performance Team - [Operations Analyst \(Transportation\)](#) - Mira Loma, CA
- Penske - [Product Specialist](#) - San Diego, CA
- Hot Topic - [Equipment Operator](#) - City of Industry, CA
- Hot Topic - [Quality Control Technician](#) - City of Industry, CA
- Rare Beauty - [eCommerce Manager](#) - Los Angeles, CA
- Sherwin-Williams - [Operations Leadership Development Program](#) - Santa Ana, CA
- Walmart - [Supply Chain Management Intern](#) - Perris, CA
- Niagara Bottling - [Professional Development Program \(SC\)](#) - Diamond Bar, CA

SPRING 2021 UPCOMING EVENTS

- Global Student Challenge
- Guest Speakers
- Skill Building Workshops
- Recruitment Events
- Visit the [OMS website](#) for an updated list of events and dates for Spring 2021

Industry & Alumni Partnerships

We welcome alumni, industry, and community organizations to partner with our department!

GETTING INVOLVED

- Attend the next OMS and CSCMP student club meeting
- Provide internships and/or job opportunities for students
- Join the TOM/EBZ Department Advisory Board

SPONSOR DEPARTMENT ACTIVITIES

- Student projects
- Supply Chain/Operations competitions
- Professional development events
- Guest speaker series
- Student internships
- Faculty research
- Scholarships
- and more!

DONATE TODAY

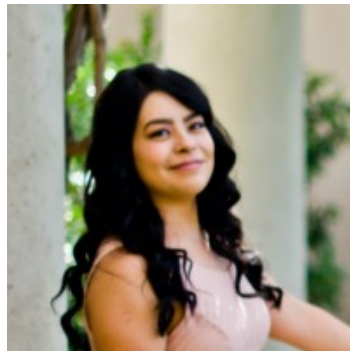
Designation: Technology & Operations Management Discretionary

Contact Us



Dr. Yuanjie He

Department Chair
he@cpp.edu



Gaby Tamayo

Department Coordinator
gabrielat@cpp.edu



Jenny Lam

Student Assistant
jennylam@cpp.edu

[FOR ADDITIONAL DEPARTMENT INFORMATION, VISIT OUR WEBSITE](#)

WISHING YOU
HAPPY HOLIDAYS
AND A WONDERFUL NEW YEAR

