

Growing Gummy Bear Experiment


By: Michelle Garcia



In this experiment, I will..

- Place a 1” inch tall gummy bear into a glass container filled with water.
- I will observe the gummy bear every 2 hours, within a 24 hour period.
- Any changes in the appearance of the gummy Bear will be recorded.





**What will happen to the Gummy Bear if it's soaked
in water for a 24 hour time frame?**

Will it dissolve?

Will it lose its color?

Will it expand?

Will it shrink?

Will it disintegrate?

-
- The bottom of the gummy bear begins to turn translucent.
 - Some bubbling occurs around the edge of the glass.

Results after 2 hours
elapsed time



Results between 4th and 6th hours of submersion

- The gummy bear grew in size.
- It lost some of its purple color and is more translucent than before.
- The water is now entirely bubbly.



Results between the 8th and 10th hour

- I placed a 1” inch gummy bear beside the original gummy bear I started the experiment with..
- In comparison; it almost doubled in size!
- The gummy bear also lost a majority of its color.



- My observations during the 12th, 14th and 16th hour consisted of the same results.
- The gummy bear measured at 1 and $\frac{1}{4}$ inches in length during these time frames.
- It also expanded in width when compared to my 10th hour observation.

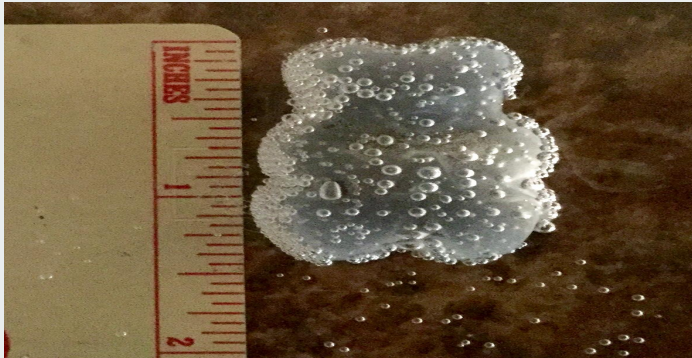


The results during the 18th & 20th hour show..



- A growth of 2 centimeters in length.





- The last 2 observations show no overall change in length (1 ¼ inches)
- However, the texture of the gummy bear is far more jellylike.
- Lastly, the width of the gummy bear expanded one centimeter in length, when compared to the 20th hour findings.

Final results, after being removed from the water..



Side view image of final results



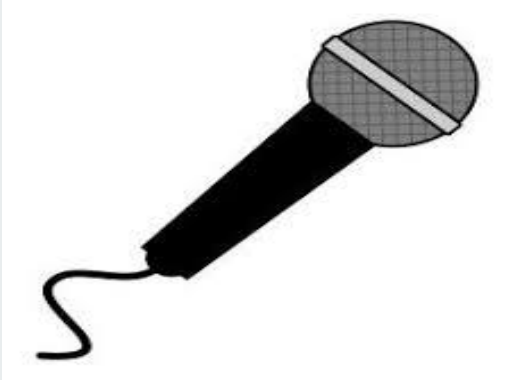
- As you can see, the gummy bear grew in all areas: length, width and depth.



My ending results conclude..

- The gummy bear expanded in size due to the volume of water entering it and it being absorbed (scientific process known as, osmosis)
- The gelatin kept the gummy bear from dissolving completely but the consistency did change from that of sponginess to a jellylike substance.
- The colored dye within the gummy bear did dissolve completely.
- Overall, the gummy bear nearly doubled in size, when compared to its original counterpart.

Scientific Gummy Bear Rap



<https://youtu.be/HqKILm2Mjkl>

Thank you!!

