



LIBERAL STUDIES

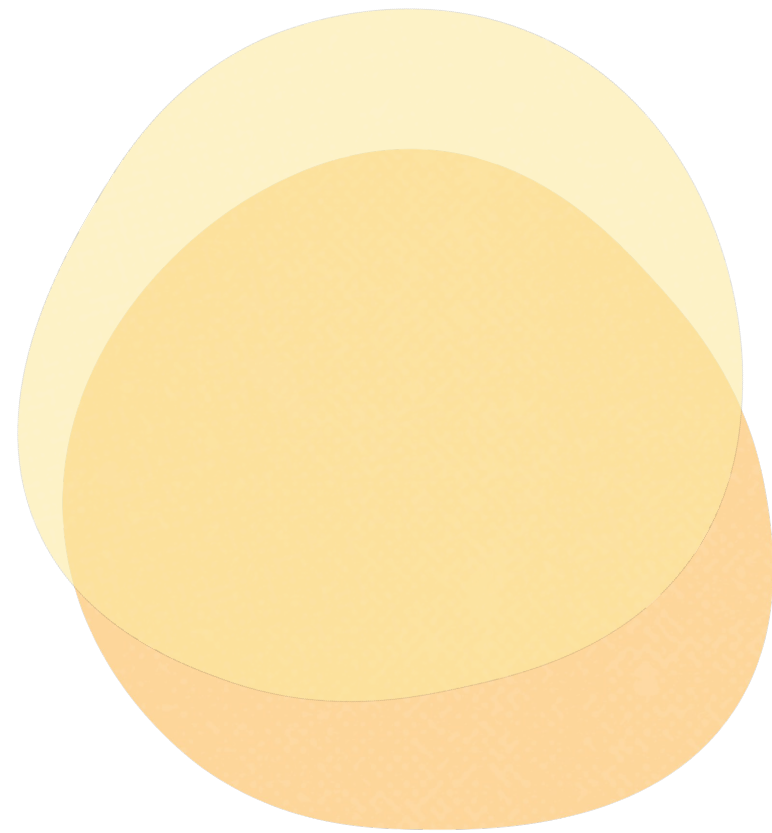
CLASS OF 2029

Career Center Highlights

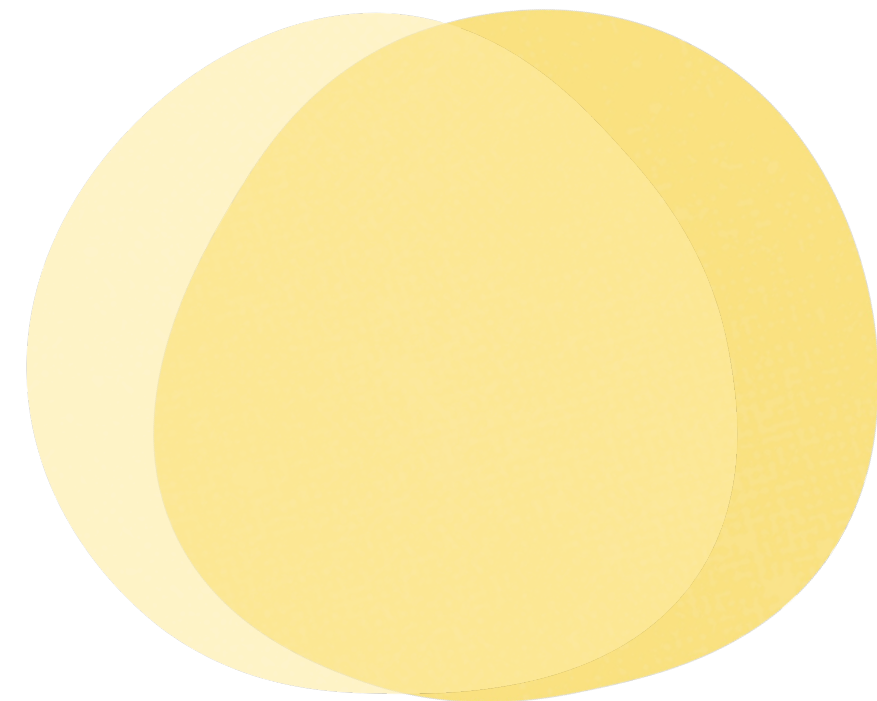
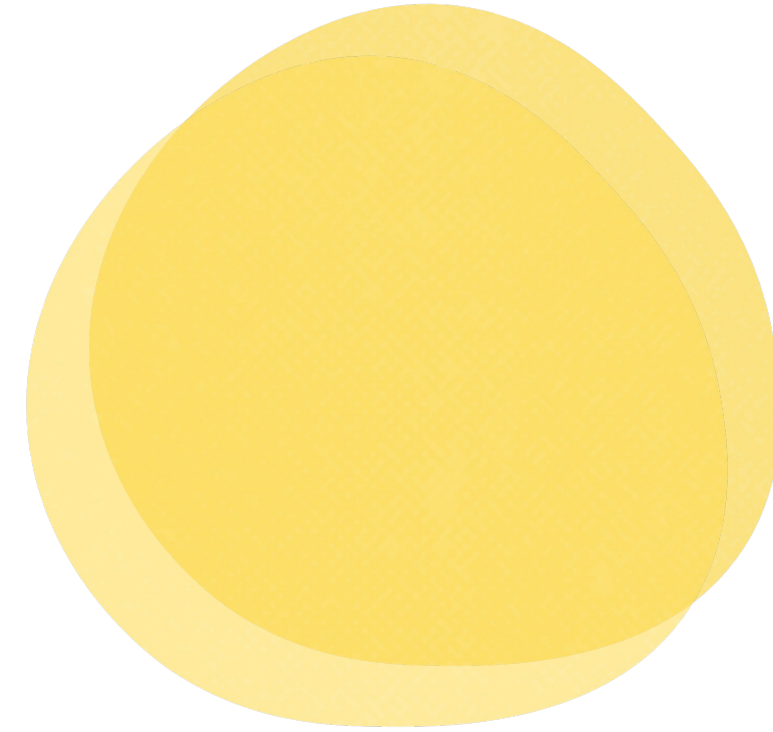
- **Grad School Expo - TODAY**
11AM – 2PM in the Quad
- **Disney College Program Info Session – 10/8**
12PM – 1PM in the BSC (Ursa Major)
- **Connect w/ Disney Recruiters – 10/9**
12PM – 1PM in the University Park



Education & Non-Profit Career Expo – Spring 2026



ADVISING



Two overlapping yellow circles of different shades are positioned on the left side of the slide. The front circle is a lighter shade of yellow and is partially obscured by the back circle, which is a slightly darker shade.

COLLEGE ADVISOR

A college advisor teaches you how to...

- Pick classes each semester
- Think through academic decisions
- Interpret university policies
- Connect with campus resources

Two overlapping yellow circles of different shades are positioned on the left side of the slide. The front circle is a lighter yellow and contains the text 'COLLEGE ADVISOR'. The back circle is a slightly darker yellow and is partially obscured by the front one.

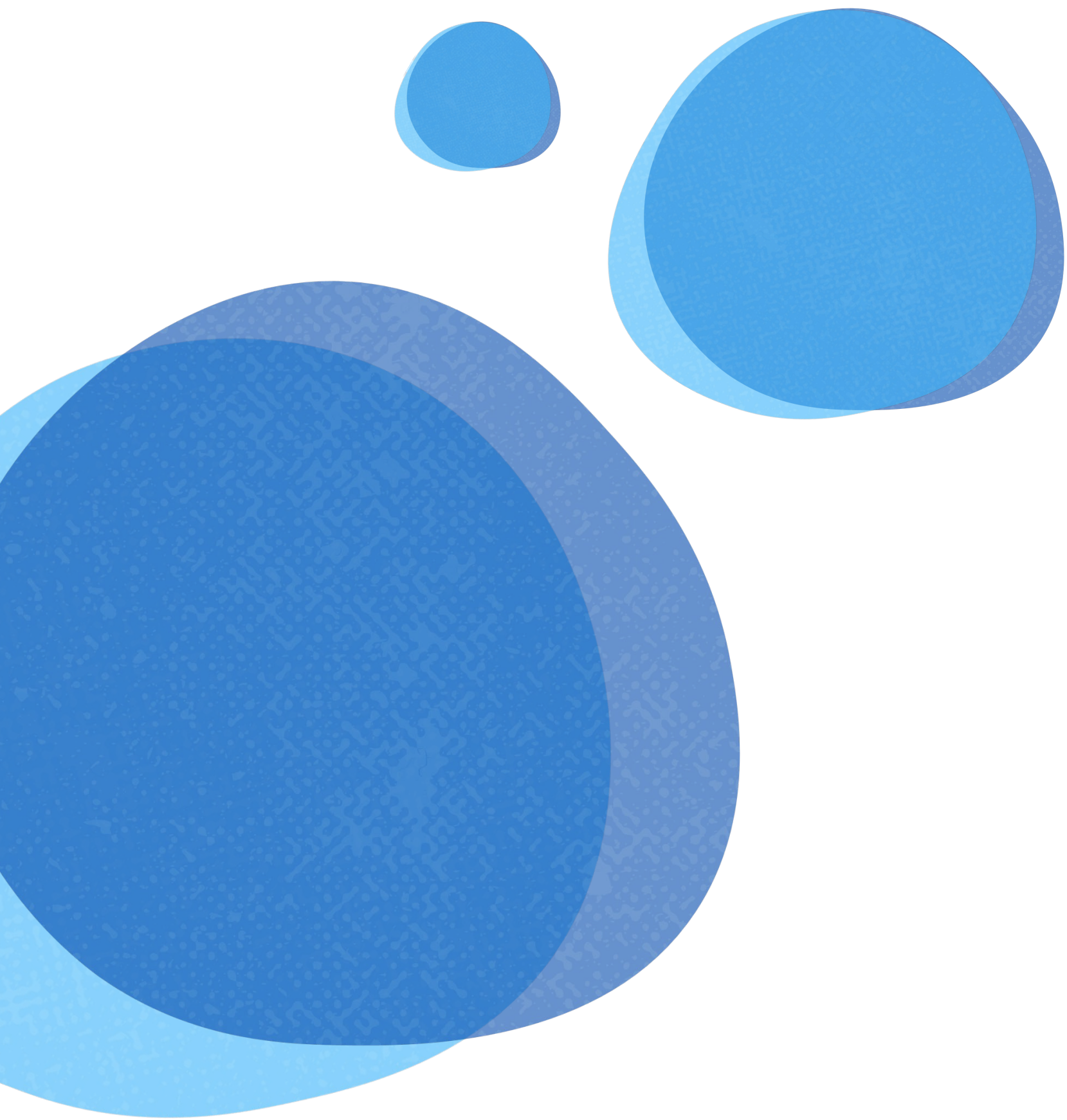
COLLEGE ADVISOR

A college advisor will not...

- Call the adults in your life
- Make decisions for you
- Judge you for struggling in school
- Kick you out of school

You have earned the right to be a
Cal Poly Pomona student.

You belong here!



University & Department Policies

Rules you should know about

CHANGE MAJOR OR OPTIONS

Steps to Changing Your Major

Do your Research.

[Career Center](#)

[University Catalog](#)

Find the requirements to switch into that major.

[Change of Major Tool](#)

Visit the advisors for the new major during their drop-in hours.

[Advising Directory](#)

Submit a change of major or option request in Spring 2026

[Registrar's Office](#)

CHANGE OF MAJOR GUIDE

STEPS



Step 1: Do Your Research



Step 2: Find the Requirements



Step 3: Meet with an Advisor



Step 4: Apply



Step 5: In Your New Major

2025-26 Change of Major Tool

Which major are you interested in switching to?

Accounting

Last Updated: 9/18/2025 4:02 p.m.

Accounting**

Requirements for Lower-Division and Upper-Division Students

- 2.5 CPP and Overall GPA
- C or better in COM 1100 or COM 2204, ENG 1101 or ENG 1103, MAT 1250 and STA 1200
- Attend Change of Major Meeting

Fall 2025 Change of Major Meeting Information

- Tuesday, September 30 from noon to 12:50 p.m. in Building 163, room 1005

Contact Information

Building 164, Room 2064

(909) 869-2365

[Department Change of Major Website](#)

CHANGE
MAJOR OR
OPTIONS

In the meantime...

Register for courses that best align with the Major and Subplan/Option that you intend to complete.

Connect with a Career Counselor this semester for help exploring careers AND majors.

[Roadmaps](#)

CLASS STANDING or ACADEMIC LEVEL

Freshman

0-29 credits



Sophomore

30-59 credits



Junior

60-89 credits



Senior

90 or more
credits

Lower Division
1000 - 2999 level

Upper Division
3000 - 4999 level

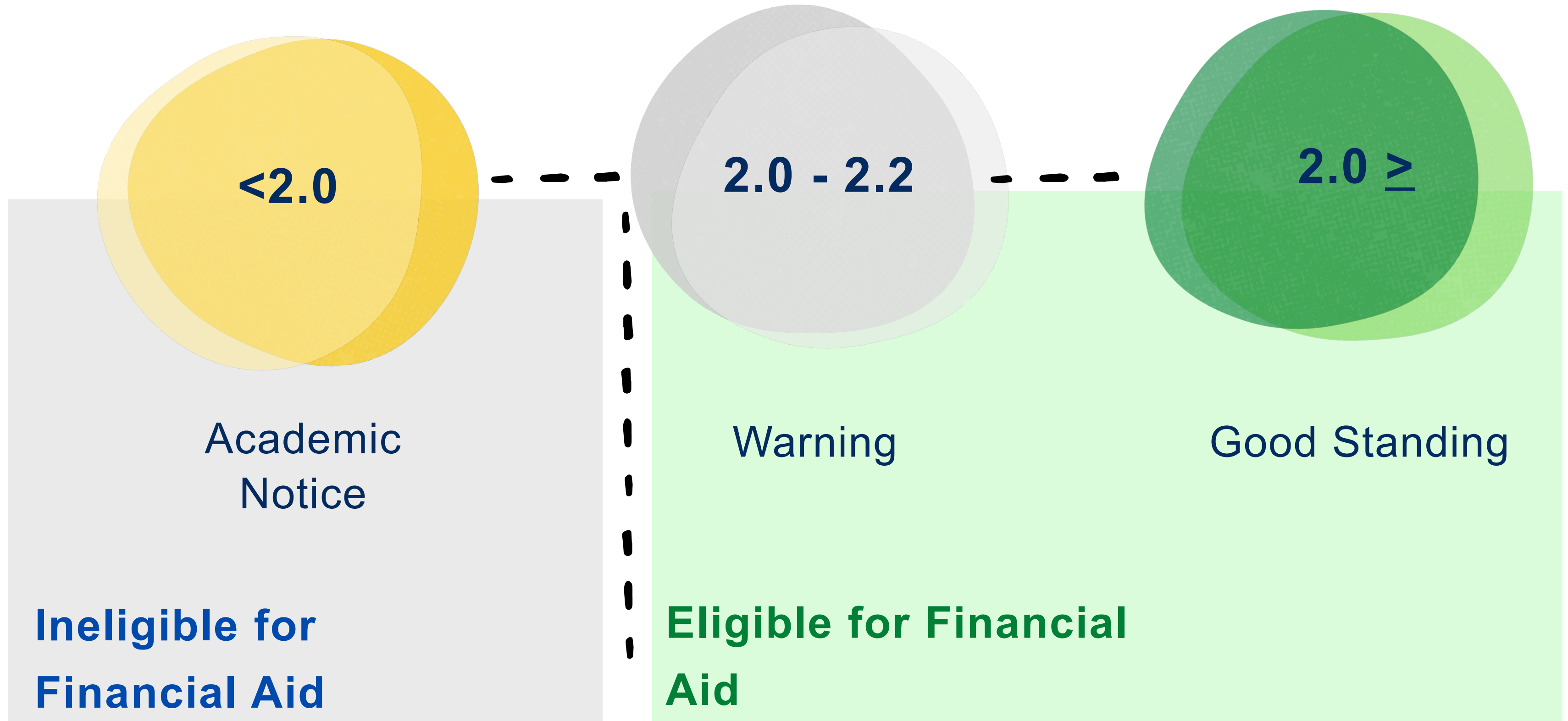
GRADES & GPA

Minimum grade to "pass" a class is: **D-**
however...

- **C-** or better in GE Areas **1A**, **1B**, **1C**, and **2**
- **Future educators** should be aiming for a **B** or better
- 2.0 CPP GPA Minimum is expected
- 2.5 GPA for admissions to CPP's Credential Program

Retake classes only at CPP to receive grade forgiveness (16 cr max)

ACADEMIC STANDING



ACADEMIC STANDING

*Fight the urge
to hide*

The notification process:


- Complete a Canvas module called “Getting Back on Track”.
- Attend an 1:1 advising appointment.
- After your GPA is above a 2.0 you’re back in “good standing”.

<2.0

Academic
Notice

Ineligible for
Financial Aid

**Sharing your grades and GPA will
be a common practice as a
college student**

The slide features two overlapping yellow circles on the left side. The larger circle is in the foreground, and a smaller one is partially visible behind it to the left.

COURSE WITHDRAWAL S

REMOVING YOURSELF FROM A CLASS

After the Add/Drop Period, we call it "Course Withdrawal".

Through the 20th day of class, you can withdrawal for any reason.

**After the 20th day of class, you can only withdraw for
"serious and compelling reasons"**

The slide features three overlapping yellow circles of varying shades on the left side. The text 'COURSE WITHDRAWALS' is written in a dark blue, sans-serif font across the middle of these circles.

COURSE WITHDRAWALS

REMOVING YOURSELF FROM A CLASS

Grades of "W" do not impact your GPA, but can negatively impact your eligibility for Financial Aid.

**Connect with the Financial Aid Office before deciding to
Withdraw from a class**

Two overlapping yellow circles of different shades are positioned in the top right corner of the slide.

LEAVE OPTIONS

TAKING A BREAK FROM SCHOOL

Stop-out is a 1 semester leave, no request is needed.

After 2 semesters of non-enrollment, you would need to reapply for admissions to return.

Leave of Absence can be for a 2 or more semester leave.

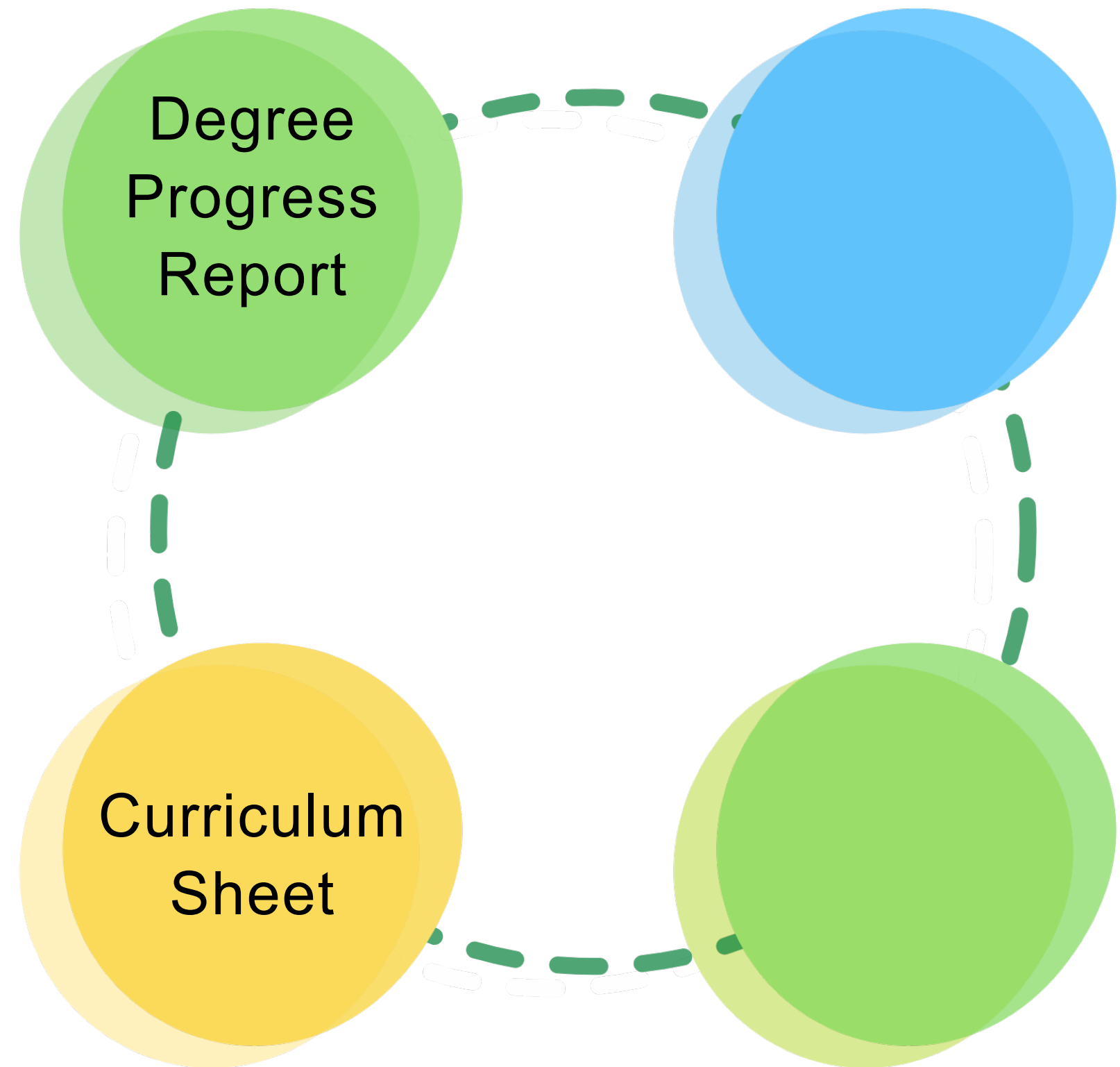


CPP ADVISING TOOLS

Advising Tools

Degree Progress Report (DPR) – Shows you what you've completed and not completed.

Curriculum Sheet – List of all the requirements for your program.



Advising Tools

Roadmaps – A sample plan for graduation.

Academic Planner - Interactive tool that allows you to design a plan for graduation.



Registration for Spring 2026



What to Expect

Registration Windows are given based on Class Level (units completed)



Registration Window (Enrollment Dates)

Fall Semester 2022 Term

Registration Window (Enrollment Dates)

Regular Academic Session

04/19/22 03:30pm - 12/03/22 11:59pm

Priority Registration is Oct 13th -14th

Parent Priority Registration is Oct 15th

Freshman Registration windows will be Oct. 30th – 31st and closes on December 3rd.

Unit Max = 16 credits

Add/Drop Period

Jan 5th – 30th

Unit Max = 18 credits

Summer 2026

Taking courses during the summer

- Community colleges only offer 1000 - 2999 (freshman/sophomore) level classes.
- **Guide to [Taking Courses at a Community College](#)**

Connect with the financial aid office to learn about whether you qualify to use financial aid for summer.

Reminder - retake classes at CPP to qualify for Grade Forgiveness.



LS MAJOR & SUBPLAN/OPTIONS

Career Paths



Teaching Pathways

Pre-Credential (Elementary and/or Special Education)

ITEP Options (Special Education)

K-8 Subject Matter:

- Math
 - English/Language Arts
 - History/Social Science
 - Science
 - Physical Education
 - Art
-
- (ITEP) Methodologies & Theories of Teaching



Non-Teaching Pathways

Subplan/Options

Subjects are interdisciplinary:

- Ethnic & women's studies
- Communication
- Environmental studies
- Biology
- Chemistry (and other sciences)
- Psychology and sociology



The image features a white background with several large, overlapping blue circles of varying sizes on the left side. These circles have a slight gradient and a soft shadow, giving them a three-dimensional appearance. The text "After Today" is positioned on the right side of the image.

After Today

Next Steps

Academic Planner - Update your plan for Spring 2026 and beyond.

Advising Drop-in Hours to ask quick questions or for help with registering.

Check your Student Center in BroncoDirect to make sure you don't have any holds that will prevent registration. You can also find your Registration Window (Enrollment Dates).

Schedule Builder to import your classes from Planner and begin building your spring schedule!

You have earned the right to be a
Cal Poly Pomona student.

You belong here!

You will each encounter unique struggles, but
you are not alone. Struggles are normal.

College is not meant to be journeyed alone.



Questions?