

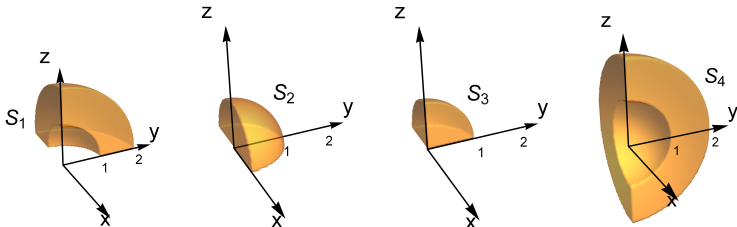
Spherical Coordinates



Question

For the solids S_k ($k = 1, 2, 3, 4$) shown, rank the triple integrals

$$I_k = \iiint_{S_k} (1 - \rho) dV \text{ from smallest to largest.}$$



A. $I_4 < I_1 < I_3 < I_2$

C. $I_3 < I_1 < I_2 < I_4$

B. $I_3 < I_2 < I_1 < I_4$

D. $I_1 < I_3 < I_4 < I_2$