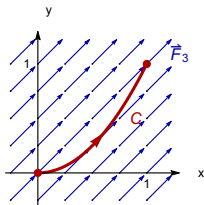
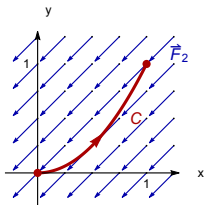
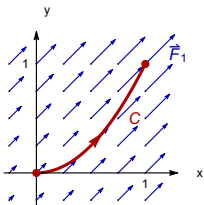


Line Integrals



Question

The figures show the same oriented curve C in vector fields \vec{F}_1 , \vec{F}_2 , and \vec{F}_3 . Rank the integrals $I_j = \int_C \vec{F}_j(x, y) \cdot d\vec{r}$.



- A. $I_1 < I_3 < I_2$ B. $I_2 = I_3 < I_1$
C. $I_2 < I_1 = I_3$ D. $I_2 < I_1 < I_3$
E. There is not enough information.