

Revitalizing Grand Park's Event Lawn in Downtown Los Angeles

Miguel Ocampo / Spring 2025 / Alvaro M. Huerta, MAUP

Introduction

Public spaces are one of the many features that people would see when visiting Downtown Areas. Some of the reasons that people enjoy public spaces is because it can improve their mental health and could also encourage them to engage in physical activities. The history and culture of downtown areas can be expressed in downtown areas by promoting different elements such as local art, landmarks, and even how the space is designed can represent the area's identity so people who are visiting can learn can the city came to be. Downtown public spaces are an important part to any city, but over time, they start to decay leading to people attending these spaces less and less leading it to be unsafe and unclean.

This could influence the surrounding businesses and residents as they would not want to visit those spaces or lose customers, eventually leading to that space being abandoned, closed, and repurposing the land for other uses. The goal would be to transform downtown public spaces into safe, vibrant, and accessible community hubs and by revitalizing a public space would increase foot traffic to local businesses and enhance the appeal of the surrounding area and the site chosen for this project is the Event Lawn of Grand Park in Downtown Los Angeles.

Methodology

- Comparison to 2 other parks: I am going to compare this park to two other parks in Downtown Los Angeles. The parks that I chose are Spring Street and Grand Hope Park.
- Walk Audit:
 1. SWOT analysis: When visiting the Event Lawn, I want to conduct a SWOT analysis to see how the park is in its current condition, what features are causing it to lose its attractiveness towards the people, what are the opportunities to make the park better, and what obstacles would I face if I want to make a change to this place.
 2. Traffic Patterns: Analyzing the flow of pedestrian traffic, which paths people mostly use
 3. Observation: Seeing which amenities are being used the most, how long someone tends to stay at the park, the safety and accessibility of the park
- Demographics: This would help me place amenities that meet the needs of the community while also representing the culture and history of Downtown Los Angeles and its people.
- Case Studies: This can help me design the park, rearrange, and implement new amenities that can boost activity to this portion of Grand Park. Two case studies that I found are Ricardo Lara Linear Park in Lynwood, CA and the High Line in New York City.

Conclusion

The revitalized Event Lawn in Grand Park, located in downtown Los Angeles, should bring businesses and people together as it could change the appearance of the surrounding area. Bringing local vendors to sell their food in a safe and thriving environment should increase their revenue and improve their business. Artists are able to express their creativity with the several murals and art gallery at their disposal which would let them tell the stories, traditions, and cultures that the downtown area and its people have to offer. The change in the design of the park should allow people to interact with all the amenities with no problem at all as everything will be accessible with the multiple pathways provided to them. Safety would be increased as a wall with gates at the entrances would make people feel relieved and enjoy the space without any concern. This revitalization could inspire city planners in the downtown area to look into revitalizing other parks in Los Angeles that have low capacity or are outdated so that people could be influenced into going out more and increase community engagement.

Key Findings

When comparing to two other parks in the downtown area which were Grand Hope Park and Spring Street Park, the layouts and amenities were more engaging with the people compared to the Event Lawn in Grand Park where everything was surrounding the main field which makes less appealing. The demographics in the downtown area mostly consist of White, Black, Hispanic, and Asian. The case studies provided information on how to space out amenities and create a path where people would want to follow and engage with the amenities and with other people. The methods used have shown the importance of community-centered revitalization, and this project aims to create a unique park that would encourage people to stay longer through diverse spaces and express local history and culture.

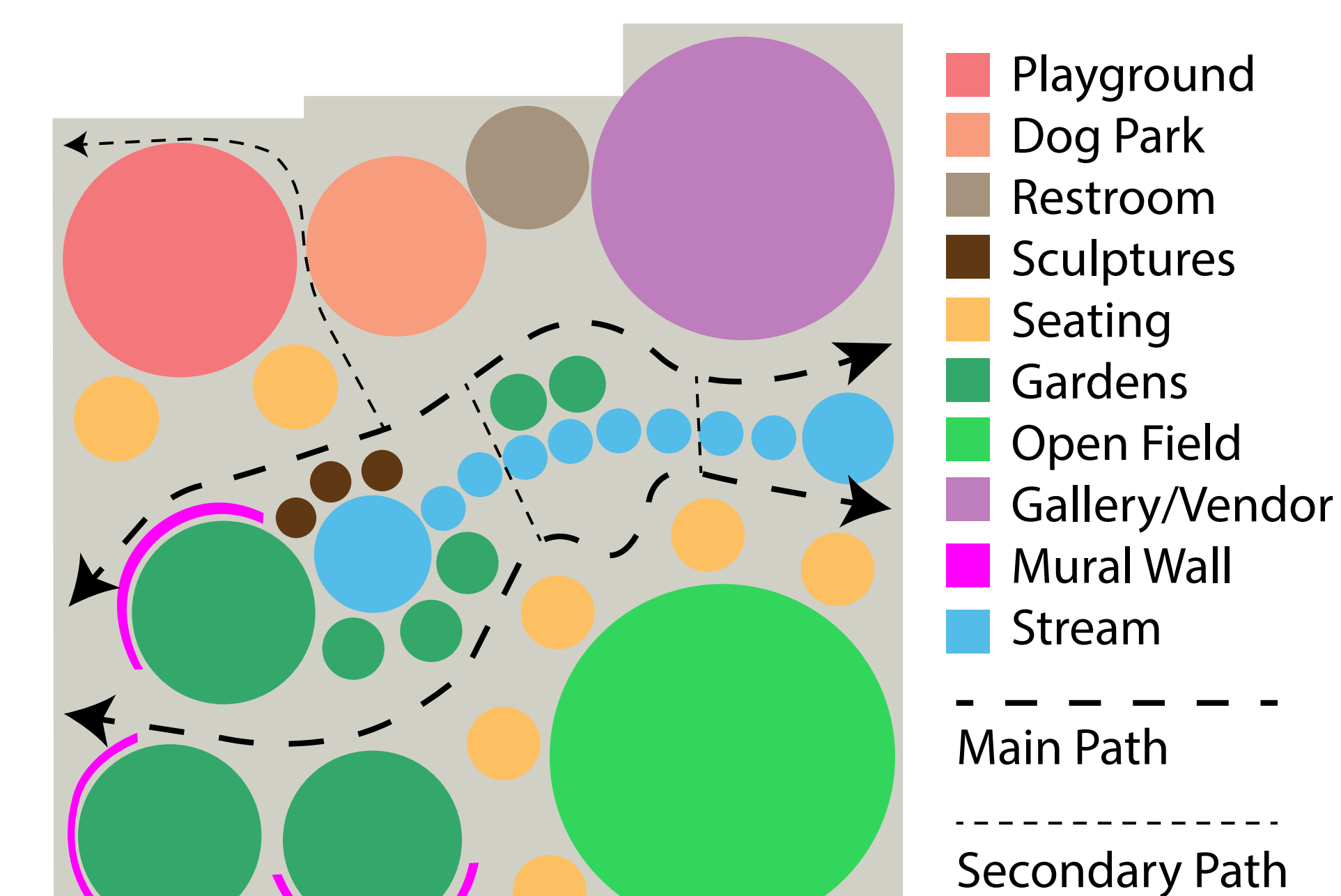
Recommendation

The revitalization project would incorporate three elevation changes with multiple pathways, seating and shading, and a 9 ft. wall providing safety and an immersive experience. The goal for this design choice would be to create an appealing and stress-reducing environment. The design will contrast with the other park layouts in Downtown Los Angeles since as it promotes easy navigation and interaction.

There are nine amenities that will cater to diverse needs.

- playground and dog park for physical activity
- native gardens, murals, and a sculpture garden for cultural expression
- an open field
- an art gallery and food court located in a mixed-use building
- a central stream that will divide the park's different environments.

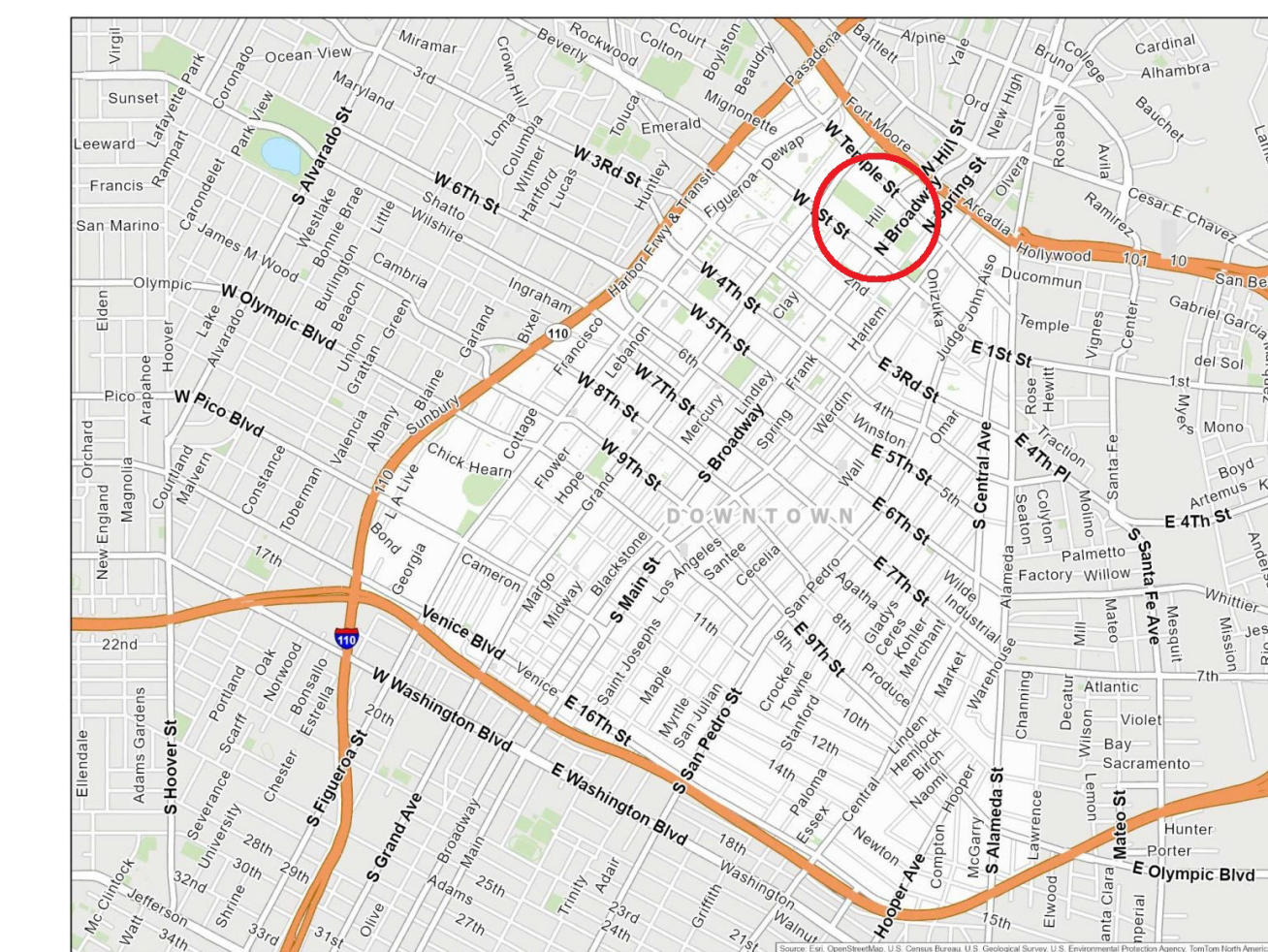
There are two main paths with the south path going through the gardens and murals to the open field and the north path going through the recreational areas and mixed-use building.



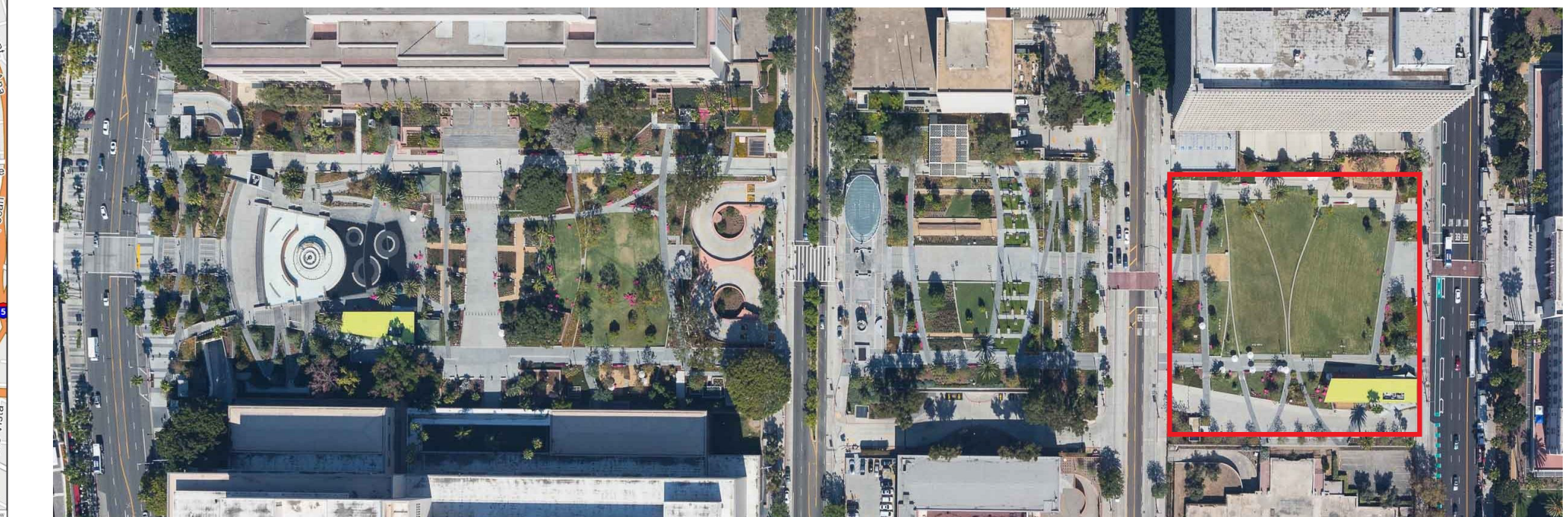
Programs and Circulation



Section 1



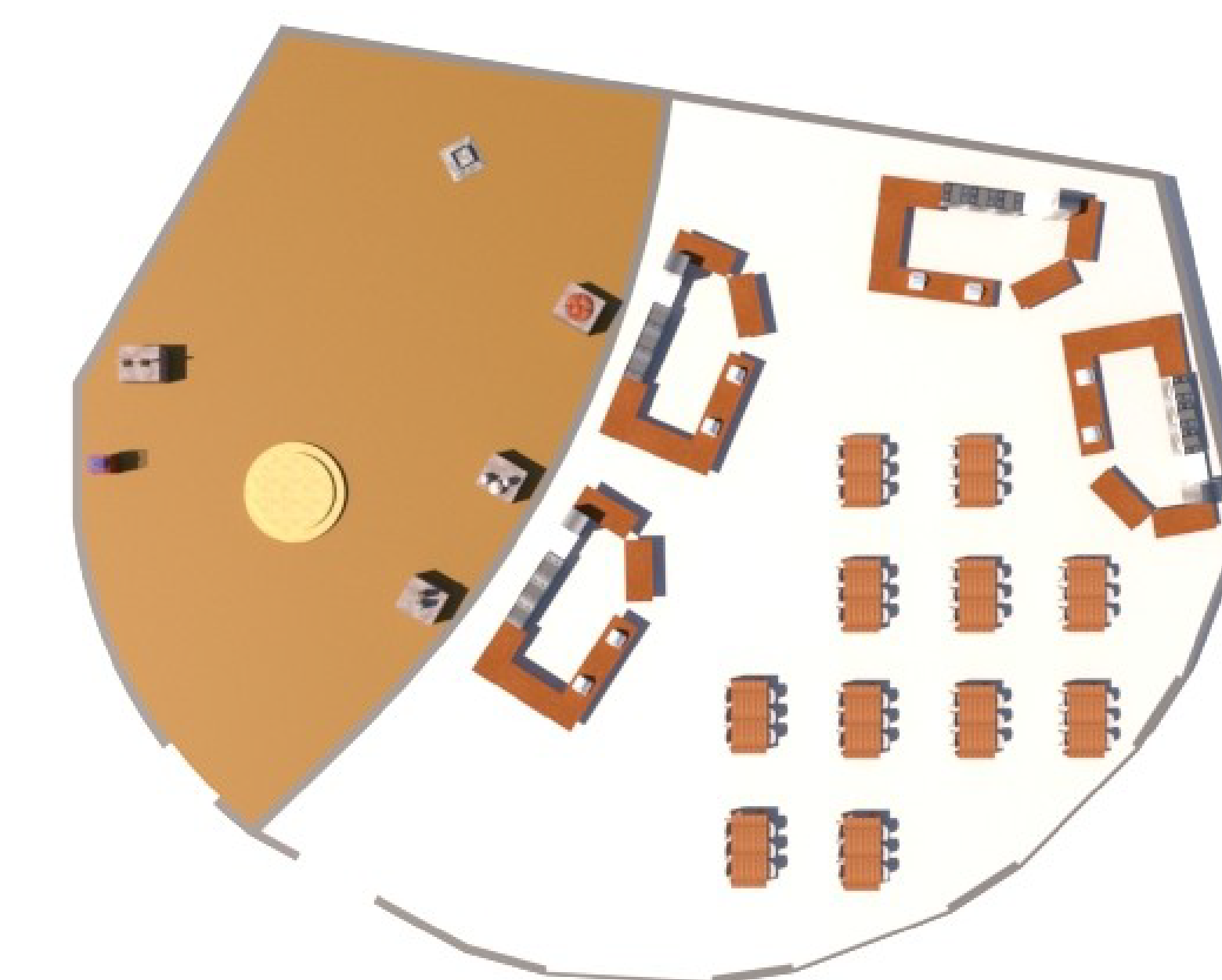
Downtown Los Angeles



Grand Park

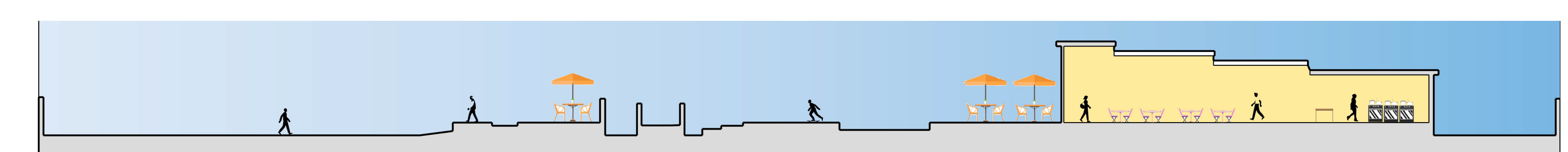
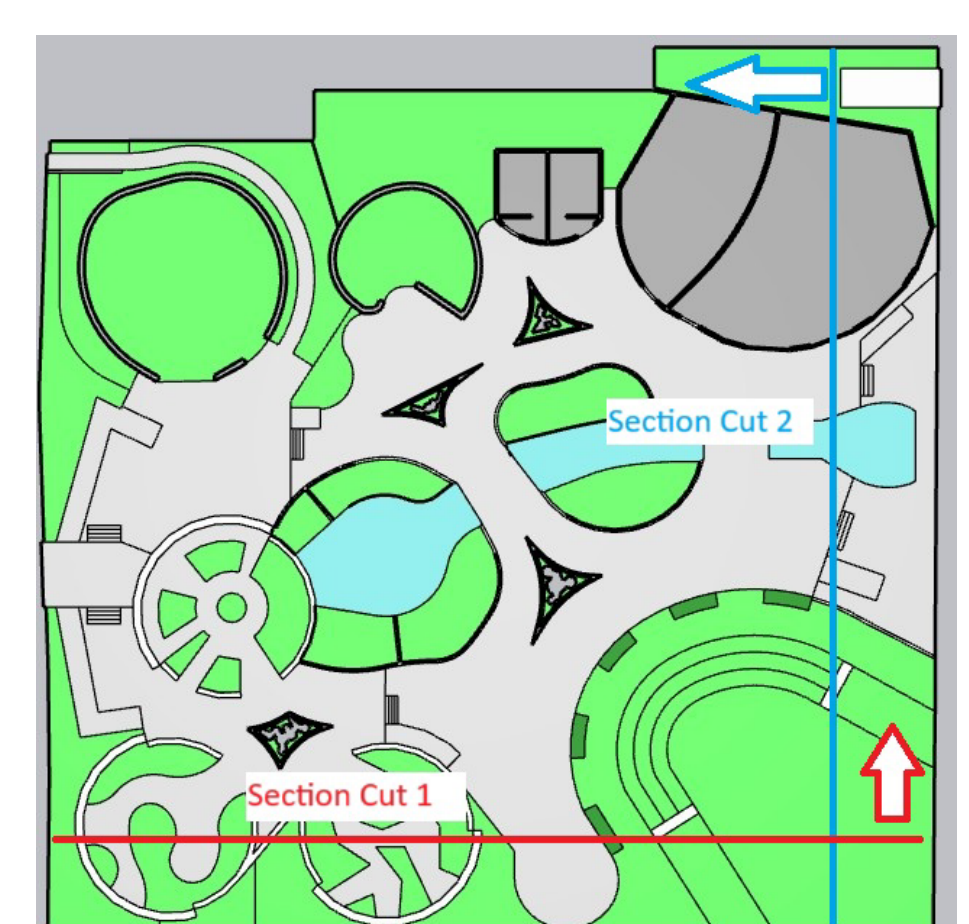
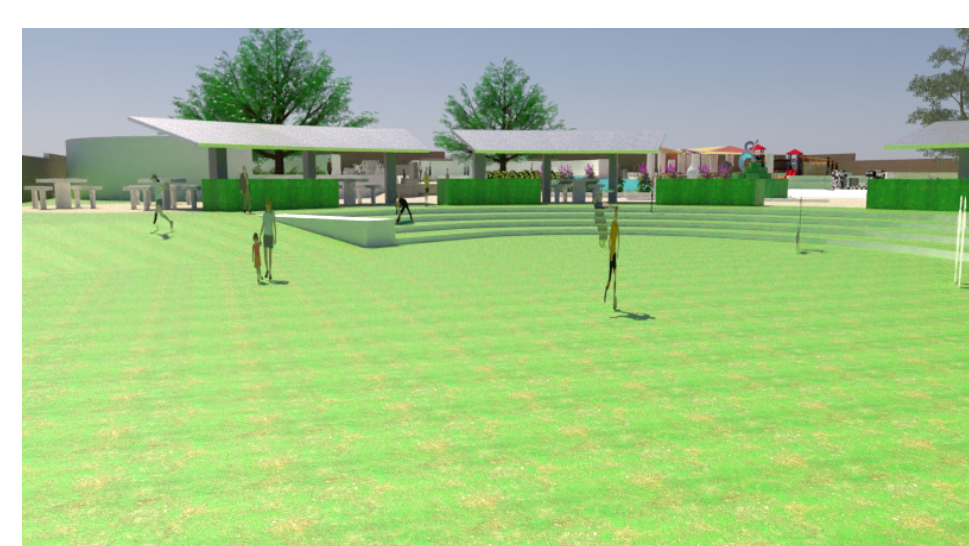


Site Plan



Art Gallery/Food Court Floor Plan

Renders



Section 2