

LONG BEACH EQUITY TOOLKIT

An Evaluative Approach

How effectively has the Long Beach Equity Toolkit been implemented in urban planning & design projects/practices?

INTRODUCTION

In response to persistent health & environmental inequities rooted in planning policies, the City of Long Beach introduced the Equity Toolkit in 2019 to embed equity into city planning & decision-making. This project’s goal is to assess whether equity principles like community engagement & fair distribution of benefits have meaningfully shaped development & to identify areas of opportunity.



What’s the difference?

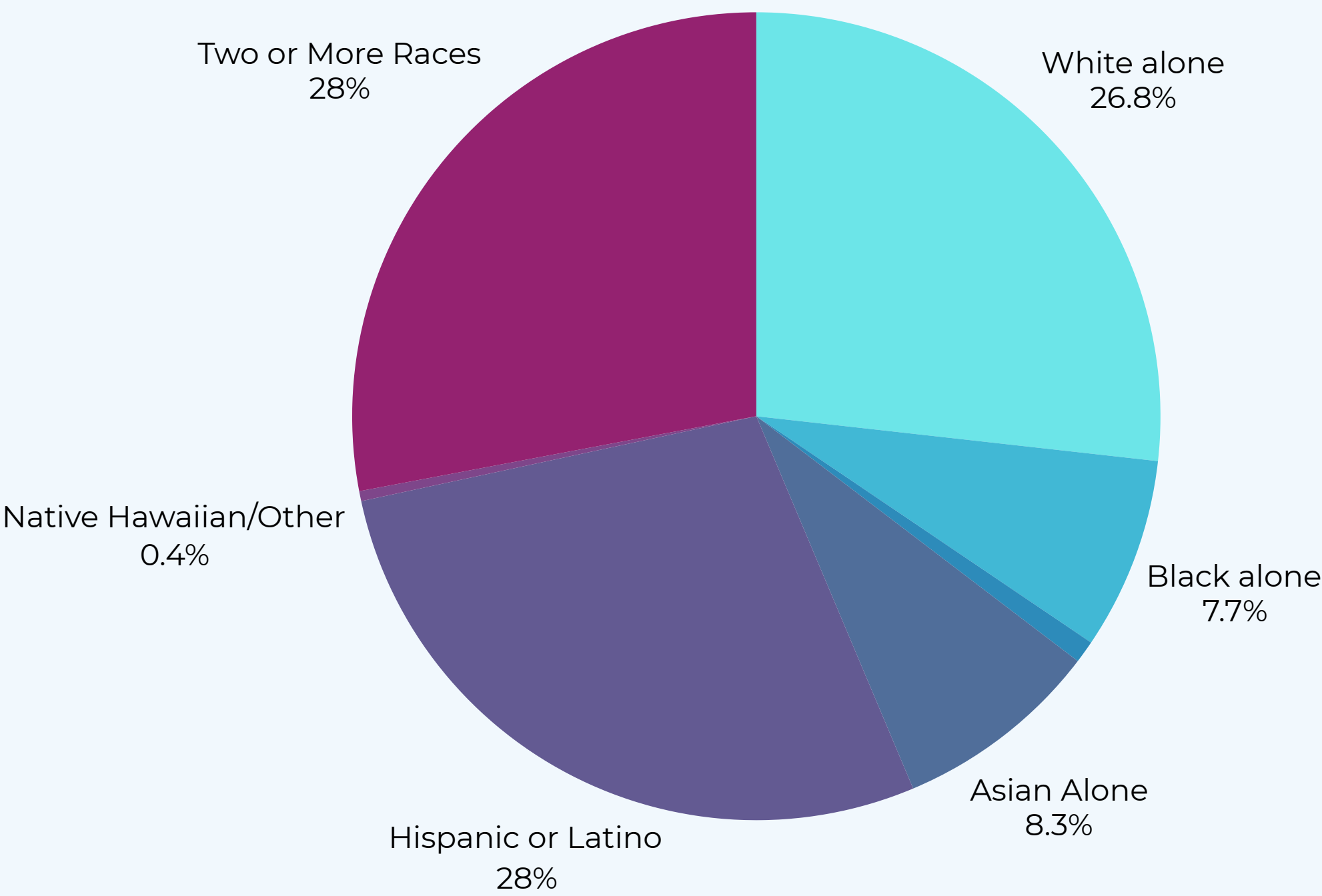
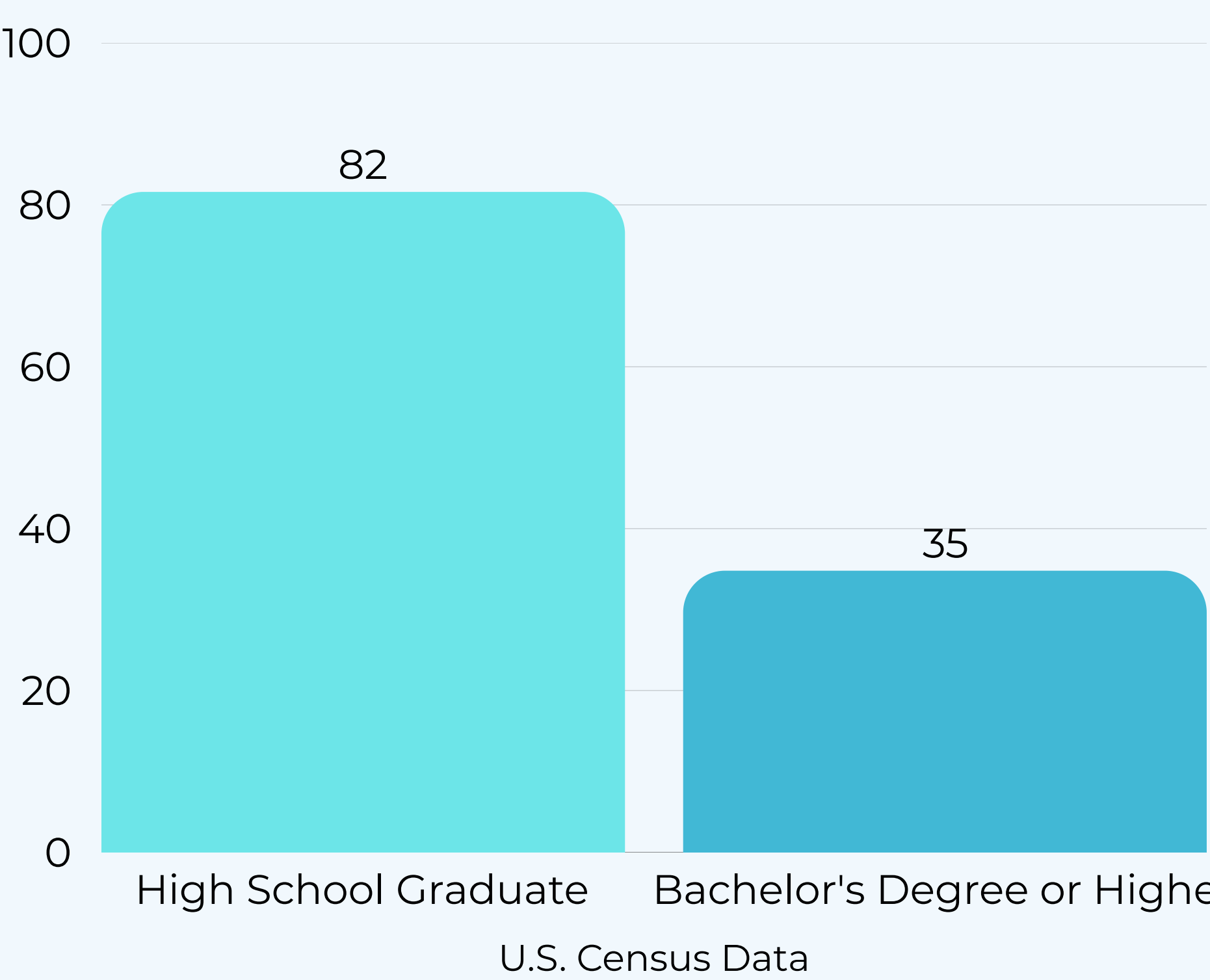
Equity ensures that everyone has the resources and opportunities to reach their full health and potential for a successful life, regardless of background or identity, while equality promotes fairness but only works if everyone starts from the same place and requires the same support.

What is the Equity Toolkit?

The *Long Beach Equity Toolkit* talks about the big differences in *wealth* and *health* in the city and how the city is working to fix these problems by listening to the community and making new rules to make the city fairer for everyone.

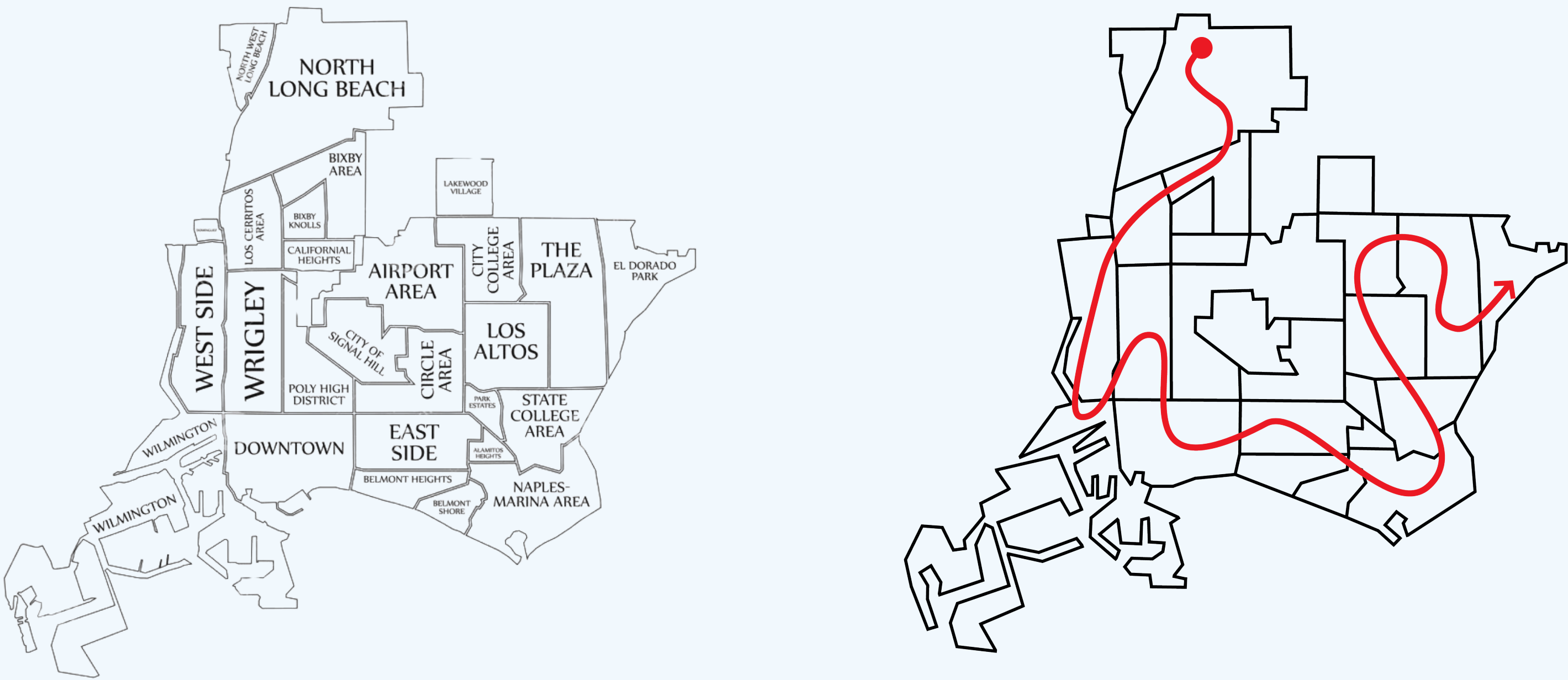
DEMOGRAPHIC OVERVIEW

The data served in two ways: (1) to frame the socio-economic context of the study area and (2) to identify patterns that may intersect with themes emerging from the document analysis.

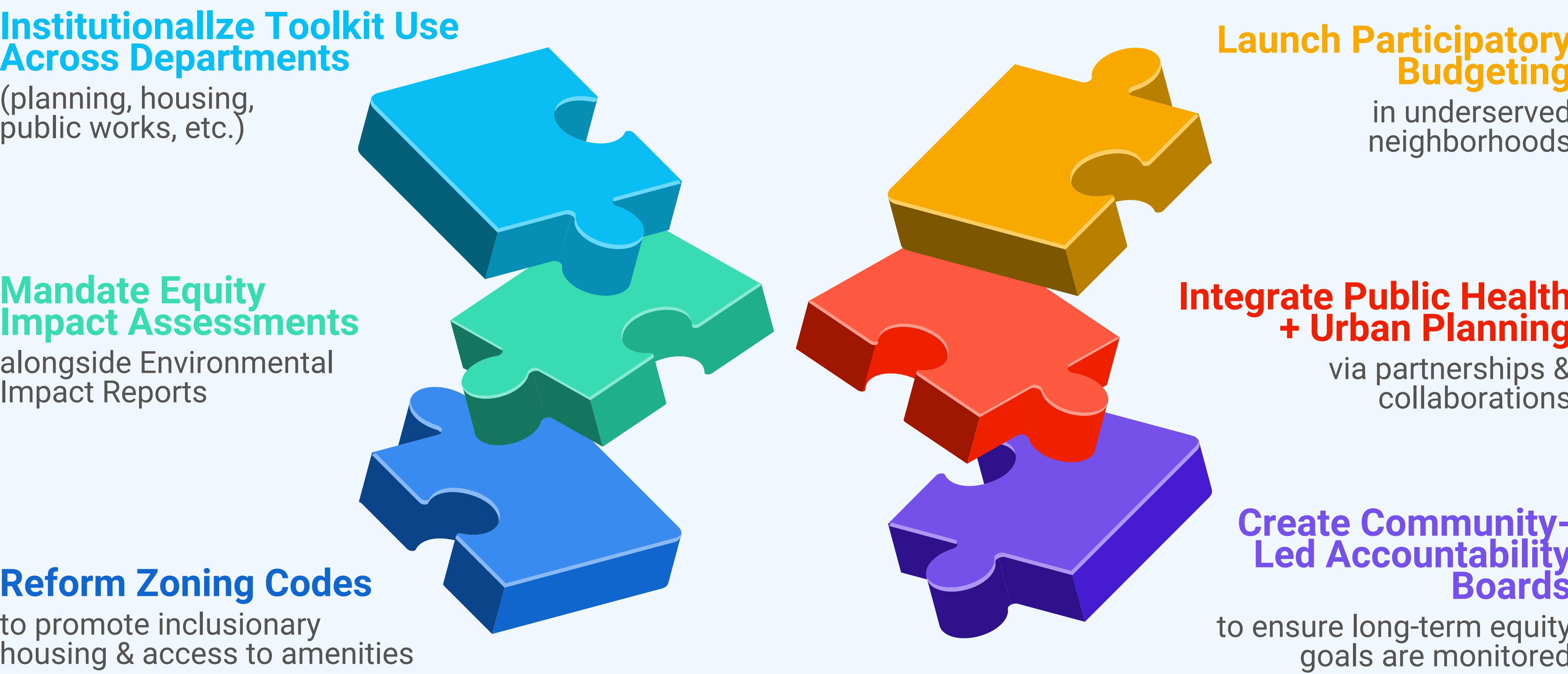


METHODOLOGY

- This project took a mixed-methods evaluation with the following components:
- **Survey:** Online, distributed via QR-coded flyers in public spaces
 - **Field Observations:** Visited multiple neighborhoods in Long Beach to document equity-related urban design elements
 - **Document Analysis:** Reviewed planning documents, policies & case studies involving the Equity Toolkit.



POLICY RECOMMENDATIONS



KEY FINDINGS

- ★ **Gap Between Policy & Practice:** Toolkit principles are not consistently reflected in the built environment or planning efforts.
- ★ **Structural Issues:** Zoning policies & lack of cross-sector collaborations hinder equity outcomes.
- ★ **Residents’ Experiences:** Feel underrepresented & uninformed about city initiatives despite ongoing planning-related projects.