

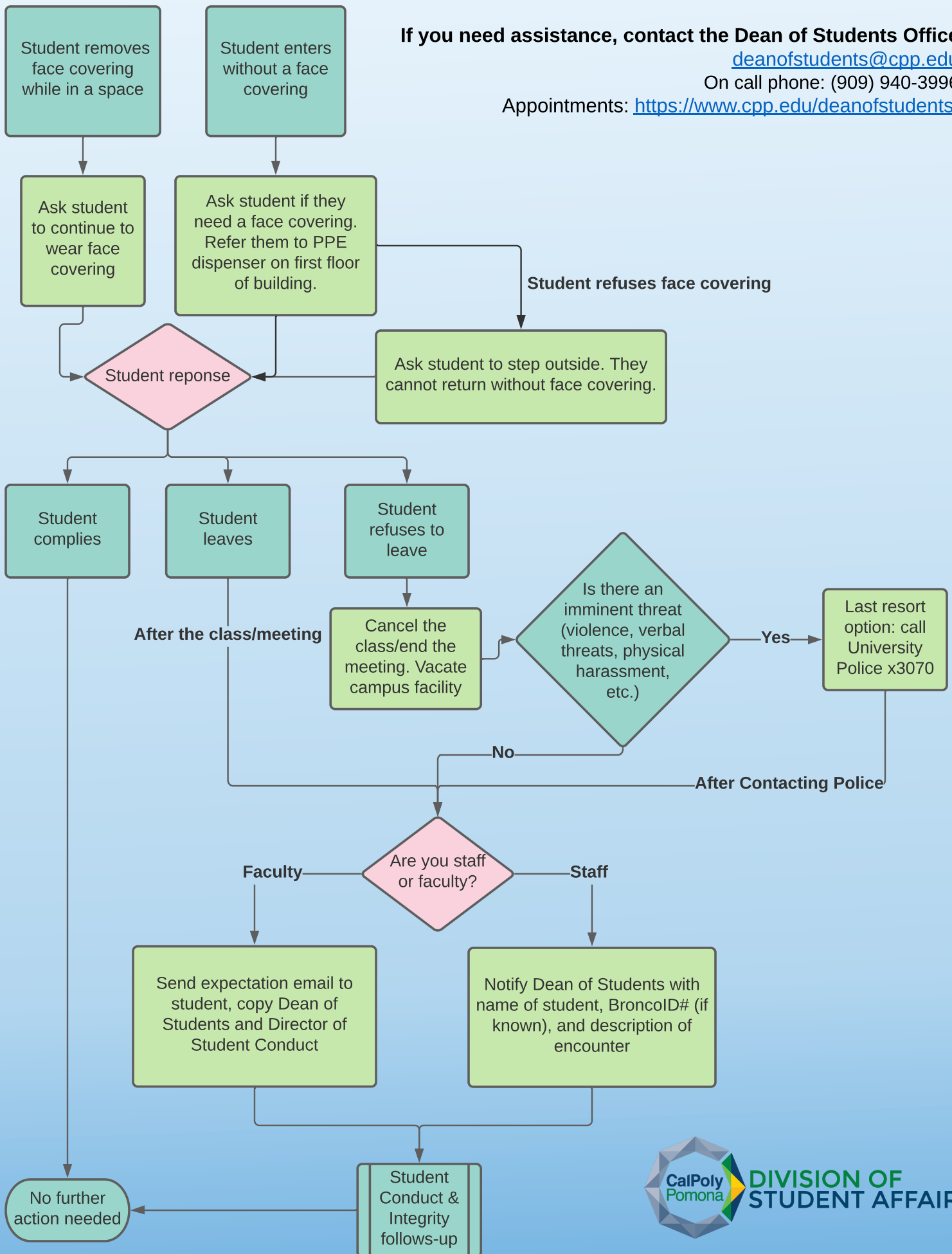
# Face Covering and Mask Protocol

If you need assistance, contact the Dean of Students Office

[deanofstudents@cpp.edu](mailto:deanofstudents@cpp.edu)

On call phone: (909) 940-3996

Appointments: <https://www.cpp.edu/deanofstudents/>



**DIVISION OF STUDENT AFFAIRS**

## General Recommendations for Staff and Faculty

- Share COVID-19 related resources with students.
- Remind students that all updates are reflected on the Safer Return to Campus Website.
- Work closely with the Dean of Students Office around students of concern.
- When in doubt, please start by contacting the Dean of Students.
- Only contact University Police if a student poses an imminent threat to the campus community (violence, verbal threats, physical harassment, etc.).

Masks are required at all times for everyone while inside buildings and classrooms. There are locations around campus where students can obtain a mask. To keep everyone safe, we recommend no eating or drinking will be allowed during class (this is included as a recommendation so that students do not have an excuse to take off their masks).

Optional language: We will take a \_\_\_ minute break at which point you may go outside to eat or drink.

Faculty may want to include a link in their syllabus or lead a brief discussion about the Student Conduct and Integrity Office. Their website includes helpful videos about mask wearing, the Covid Compliance Guide, and generally responsible behavior on campus: <https://www.cpp.edu/studentconduct/>.

Send a 'Return to Classroom Expectations' email to student to remind student of requirements and classroom expectations (sample below).

### Template Expectation Email

To: Student CPP Email

Cc: [jgrady@cpp.edu](mailto:jgrady@cpp.edu), [jpettigrew@cpp.edu](mailto:jpettigrew@cpp.edu)

Subject: Return to Classroom Expectations: Refusal to Wear Mask/Face Covering

Dear STUDENT,

Earlier today, you were asked to leave my XXXX-XXX class after declining to abide by Cal Poly Pomona's Face Covering and Mask mandate outlined on the [Safer Return to Campus Website](#). As members of the campus community, we must all play a part in preventing the spread of the pandemic and keeping our learning environment as safe as possible.

**In order to return to my class, you must comply with the face covering and mask requirement.** If, for whatever reason, you are unwilling to abide by this requirement, please contact the [Dean of Students Office](#) to discuss alternative plans.

I hope to see you during our next class period.

Sincerely,  
Instructor's Name

### Exceptions: Student Accommodations

Some individuals may be exempted from these guidelines due to a documented disability or legitimate medical reason. Students requesting accommodations must work with the Disability Resource Center. If an accommodation request is approved, the DRC will work with faculty and the student around possible options.

### Additional Resources

COVID-19 Compliance Guide (Fall 2021)

[https://www.cpp.edu/studentconduct/img/covid-19-compliance-guidelines\\_-2021-2022---final.pdf](https://www.cpp.edu/studentconduct/img/covid-19-compliance-guidelines_-2021-2022---final.pdf)

COVID-19 Compliance Video (Fall 2021)

<https://www.youtube.com/watch?v=Hy9lw53E8wQ>

Safer Return to Campus Website

<https://www.cpp.edu/safer-return/index.shtml>

Student Conduct Code

<https://www.cpp.edu/studentconduct/student-conduct-code.shtml>

Dean of Students Office

<https://www.cpp.edu/deanofstudents/index.shtml>