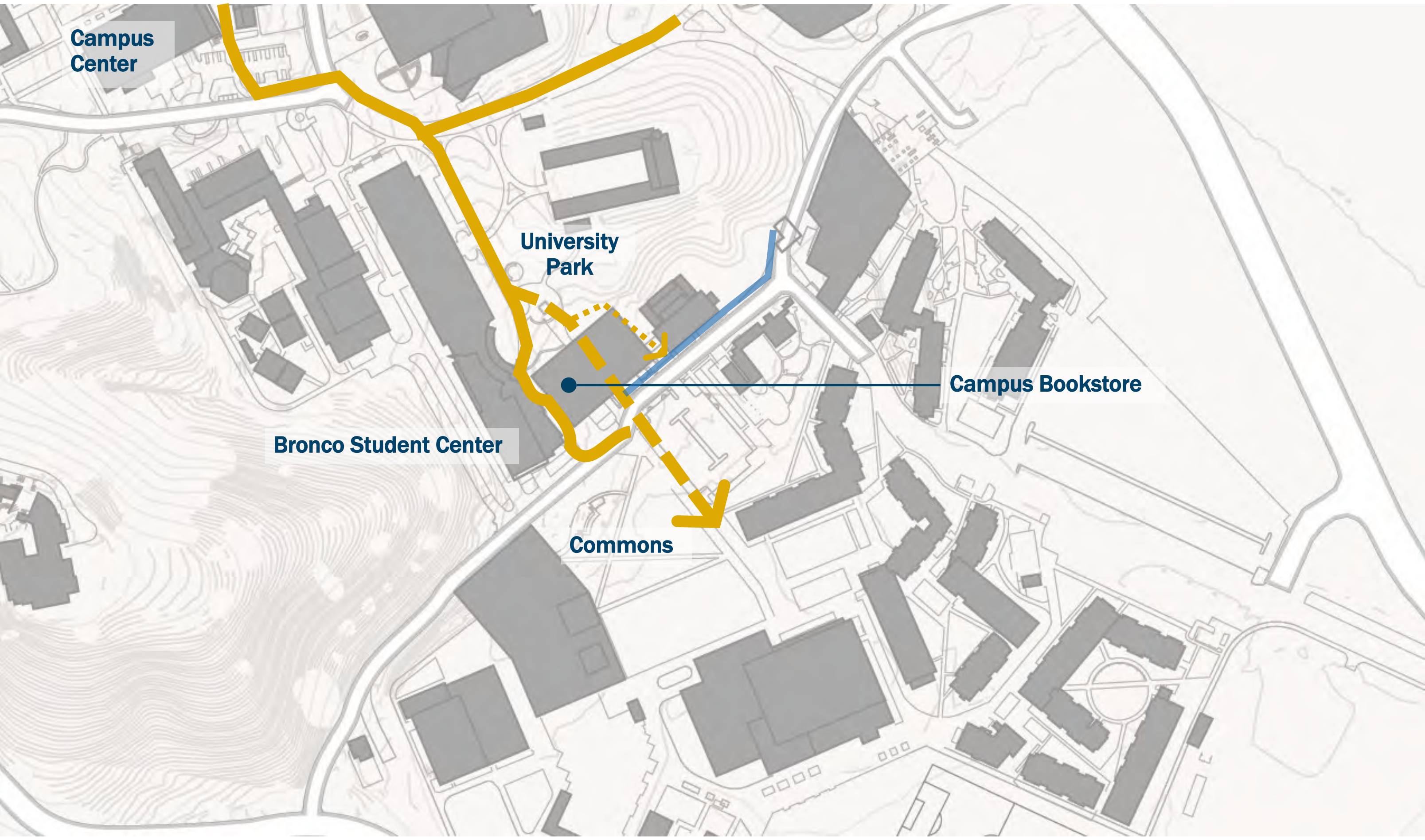


BSC + Bookstore Proposed Improvements

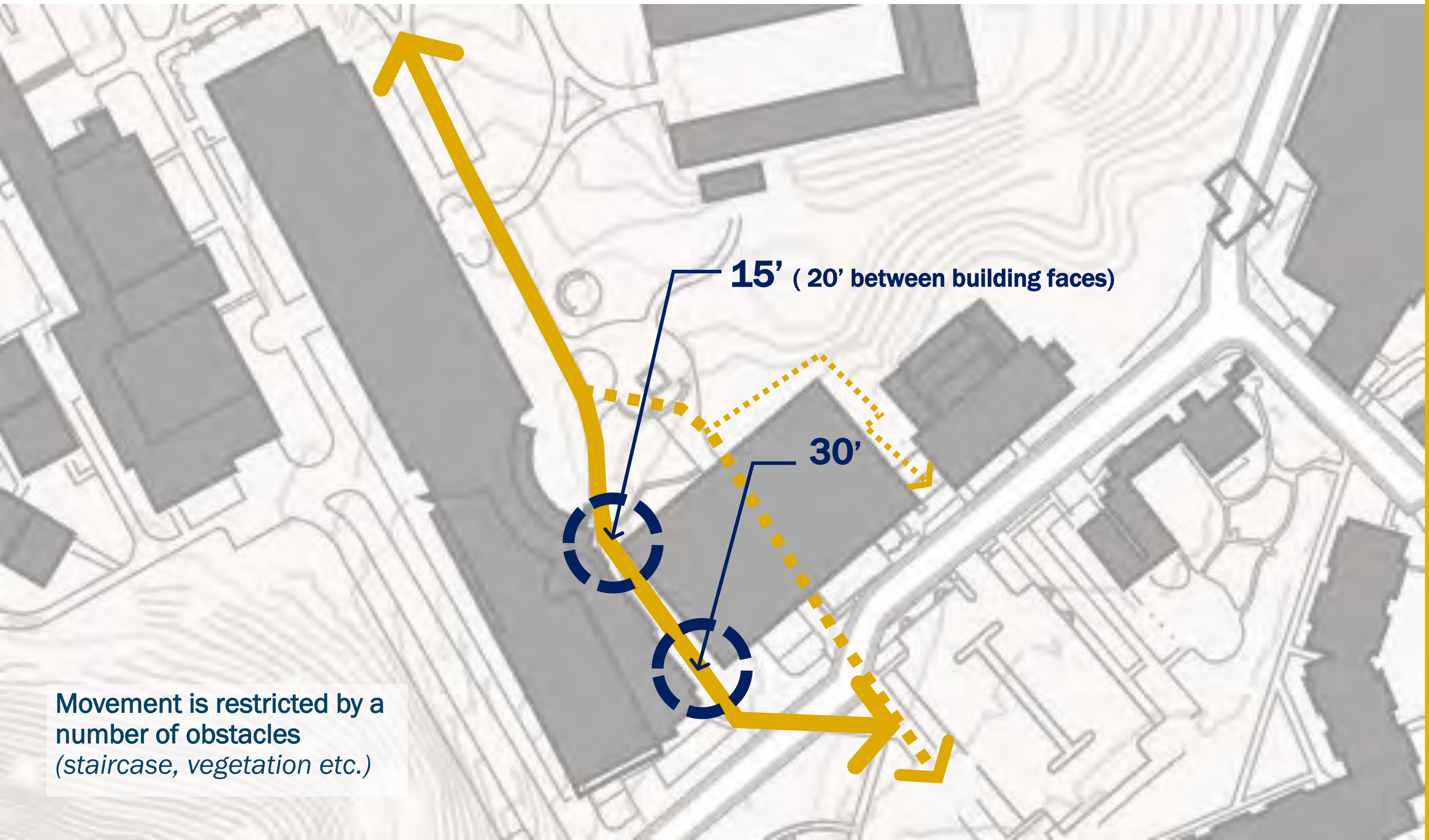
Campus Master Plan

.....

Existing Context



Constraints



Movement is restricted by a number of obstacles (staircase, vegetation etc.)

15' (20' between building faces)

30'



- Walkway isn't wide enough for use
- Limited sightlines
- Lack of active uses
- No signage, branding/identity
- Lots of blank wall along the east side (Bookstore Building)
- No seating or gathering spots



Bookstore – connector or obstacle?



- Direct path is through the building, walkway on the west side is hard to find
- Conflicting service/loading dock uses
- Potential for conflicts with bike path, pedestrians & vehicles
- Blank wall, no directional signage, identity
- Bookstore uses have changed, reducing amounts of book storage & deliveries

BSC + Bookstore Strategy

- **Immediate**
 - Improve exterior walks, connections
 - provide more solutions for outdoor seating + study space
- **Near Term – Phase I & II**
 - Make changes to the bookstore building (exterior/interior) to provide more student study space and expand/improve the N-S path between the buildings
- **Mid Term**
 - Relocated the Bookstore use to the new Transit + Visitors Center planned for a mixed-use parking structure at Temple & South Campus Dr
 - Demolish/alter/repurpose bookstore side of the building to connect Bronco Commons and University Parky
- **Longer Term**
 - Replace the Bookstore Building with expanded open space
 - Foundation Building (*original to Kellogg Ranch*) becomes student club space

Immediate/Short Term Improvements

Immediate: Potential Improvements



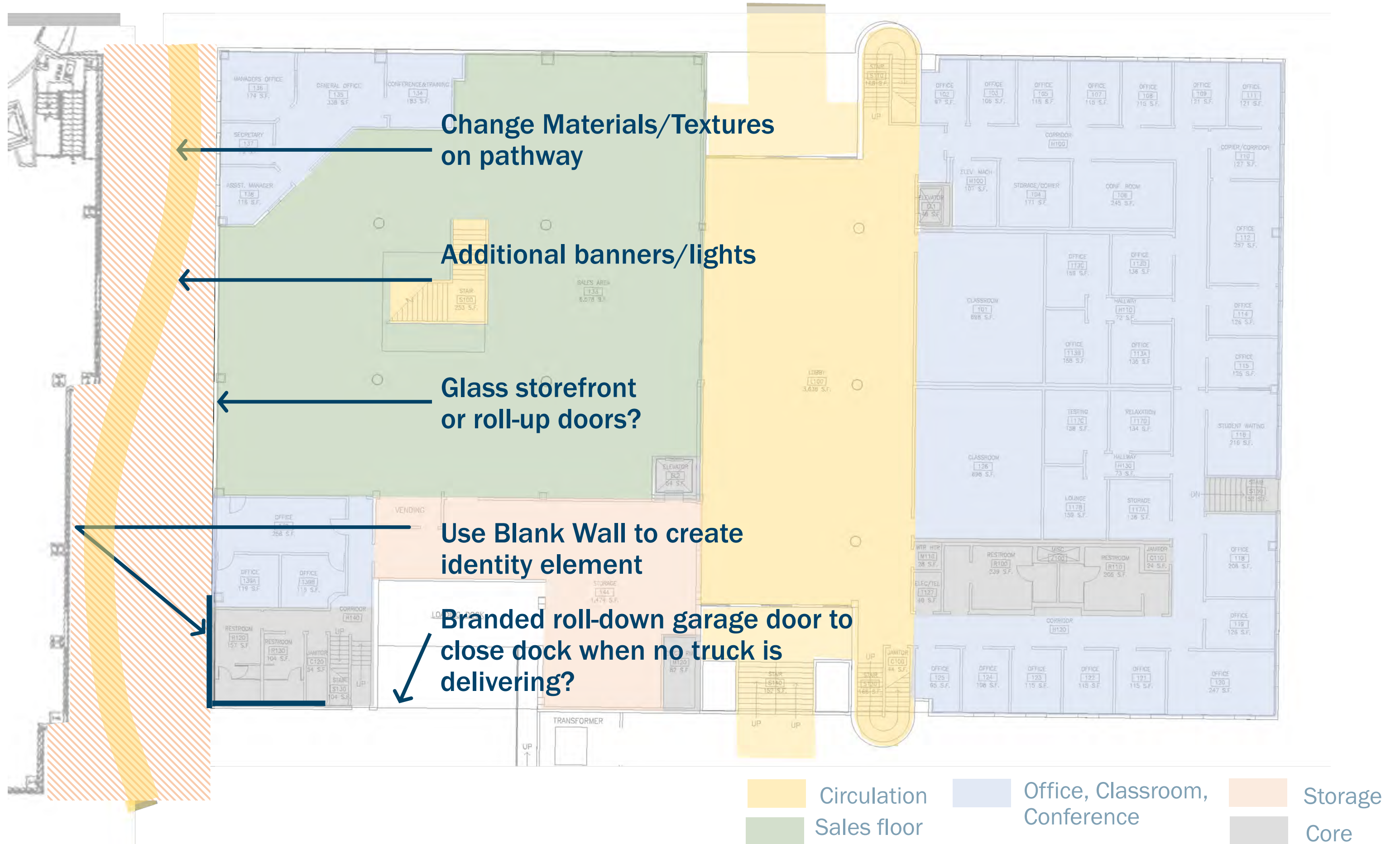
- **Widen the pathway**
- **Change paving materials and texture**
- **Energize blank walls:**
 - **Green living wall**
 - **Mural/painting**
 - **Dynamic or Interactive Art Installations**
 - **Define ASI/Student Space for posters, comments, event use**
- **Add glass storefront – display, entry? on the west bookstore wall**
- **Integrate food/beverage options + seating**

Campus Bookstore Program – Existing First Floor



- Circulation
- Sales floor
- Office, Classroom, Conference
- Storage
- Core

Immediate: Potential Improvements



Interactive Art Wall



Precedent: Neural Alley, Chattanooga

Pavement Material/Texture Changes



Precedent: Green Garage Alley, Detroit

Glass Storefront Roll-Up Doors



Precedent: The Corner Alley, Cleveland

Near Term: Phase I - Existing

Bronco Student Center open house identified critical need for additional study space



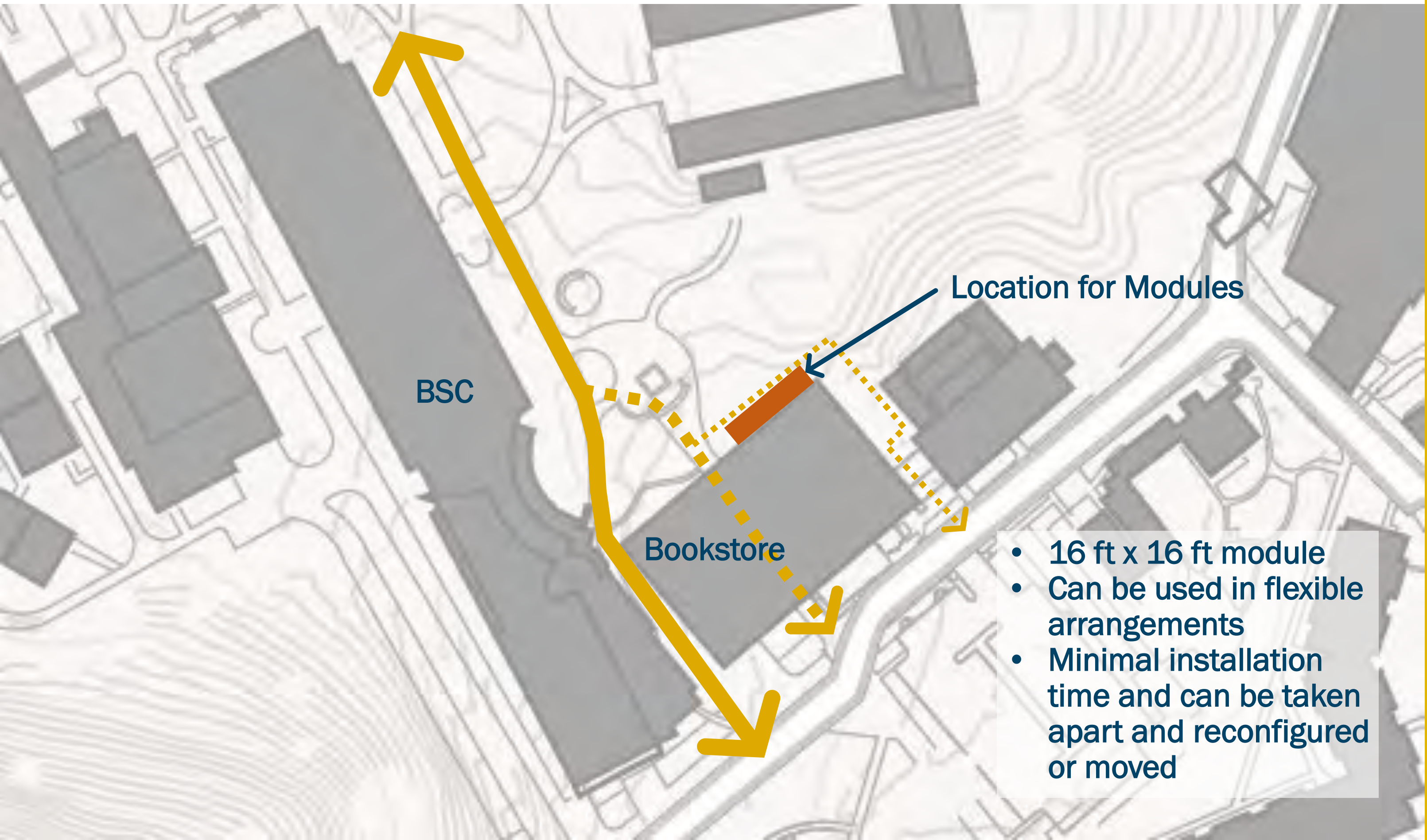
Campus
Bookstore
Building

Foundation
Building

First Floor

Second Floor

Near Term: Phase I - Exterior Study Space



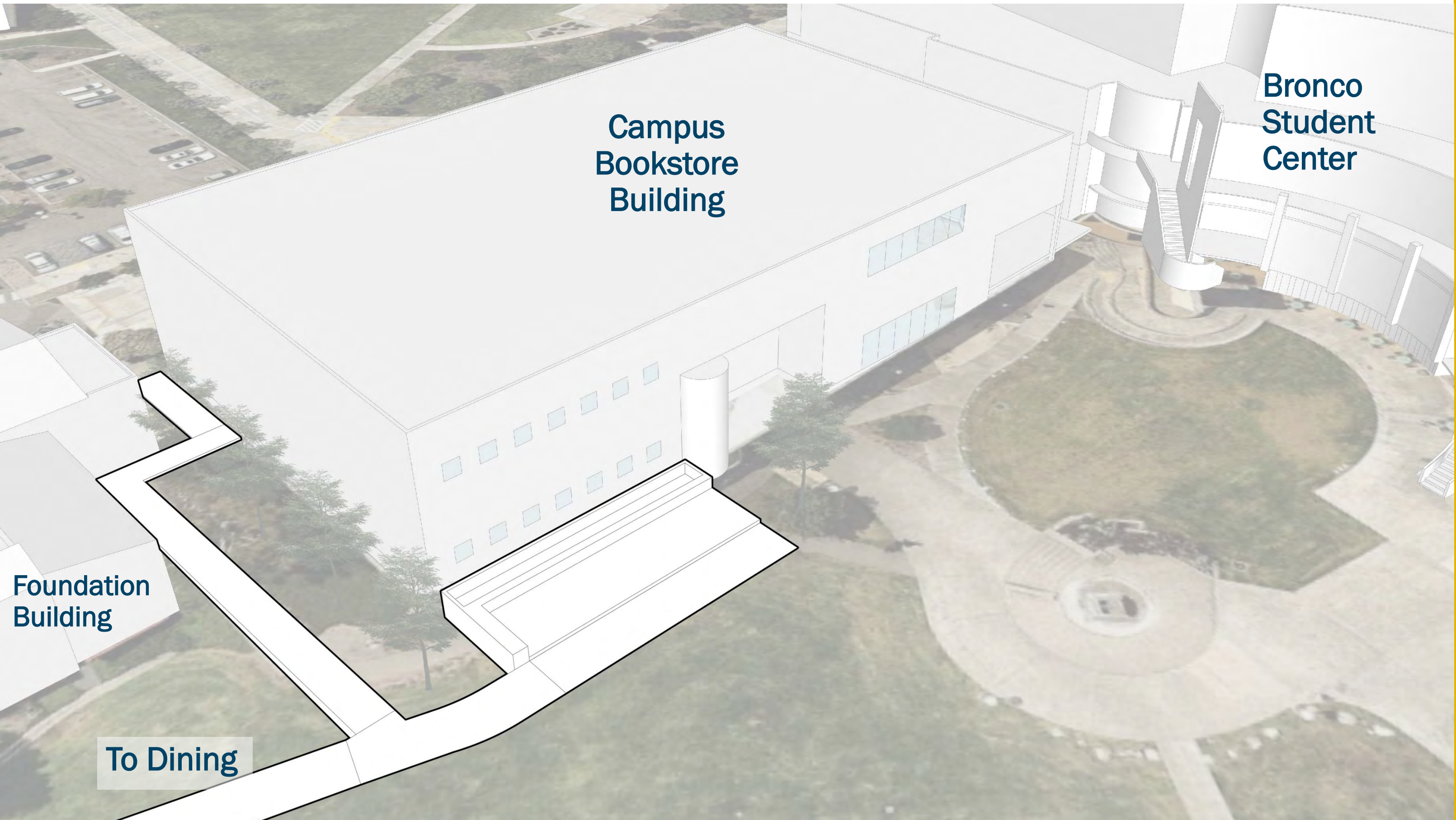
Location for Modules

BSC

Bookstore

- 16 ft x 16 ft module
- Can be used in flexible arrangements
- Minimal installation time and can be taken apart and reconfigured or moved

Near Term: Phase I - connect pathways



Near Term: Phase I - add outdoor study area



Campus
Bookstore
Building

Bronco
Student
Center

Foundation
Building

To Dining

Landscape Forms: Module



Landscape Forms: Module

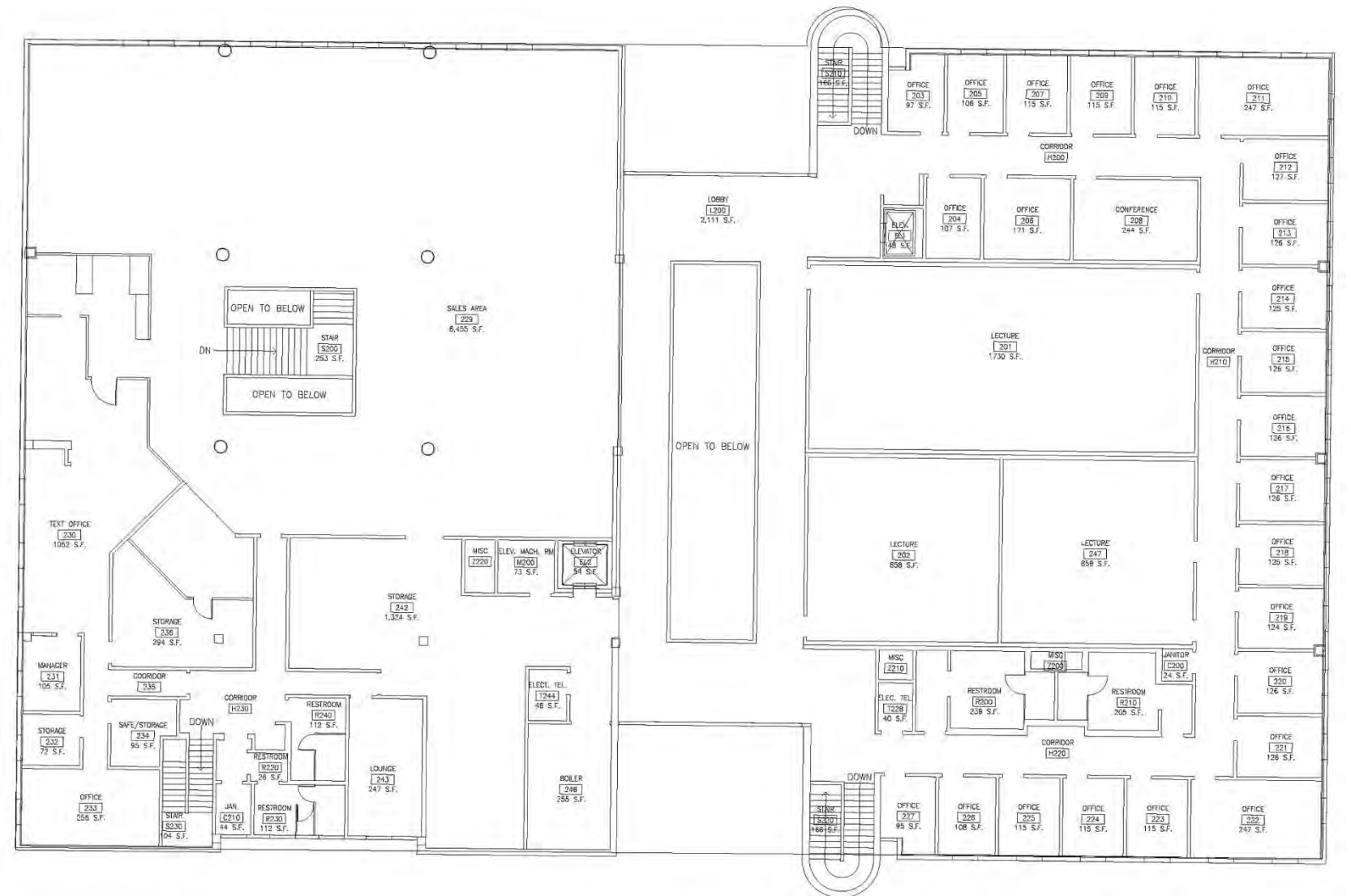
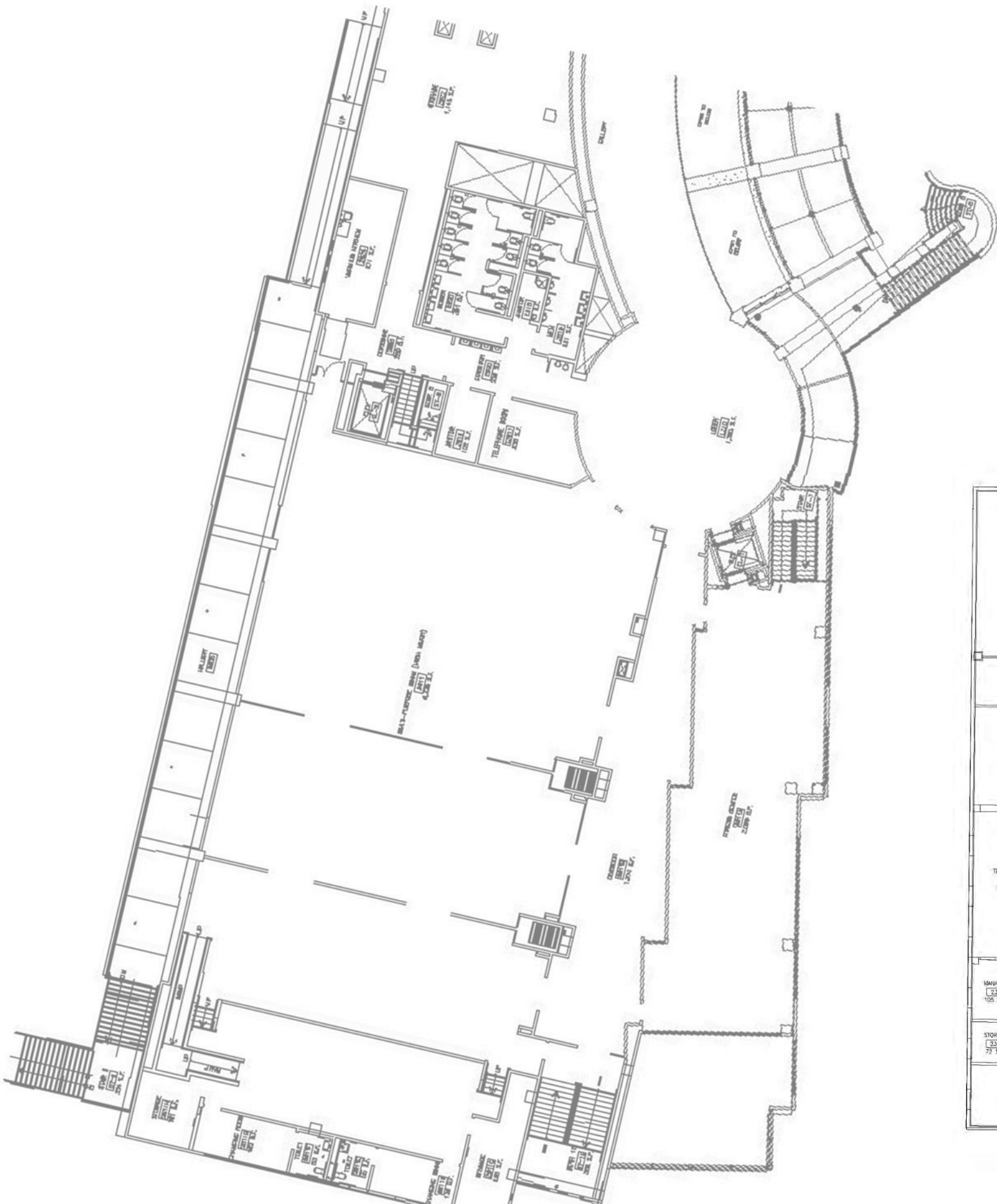


Landscape Forms: Module



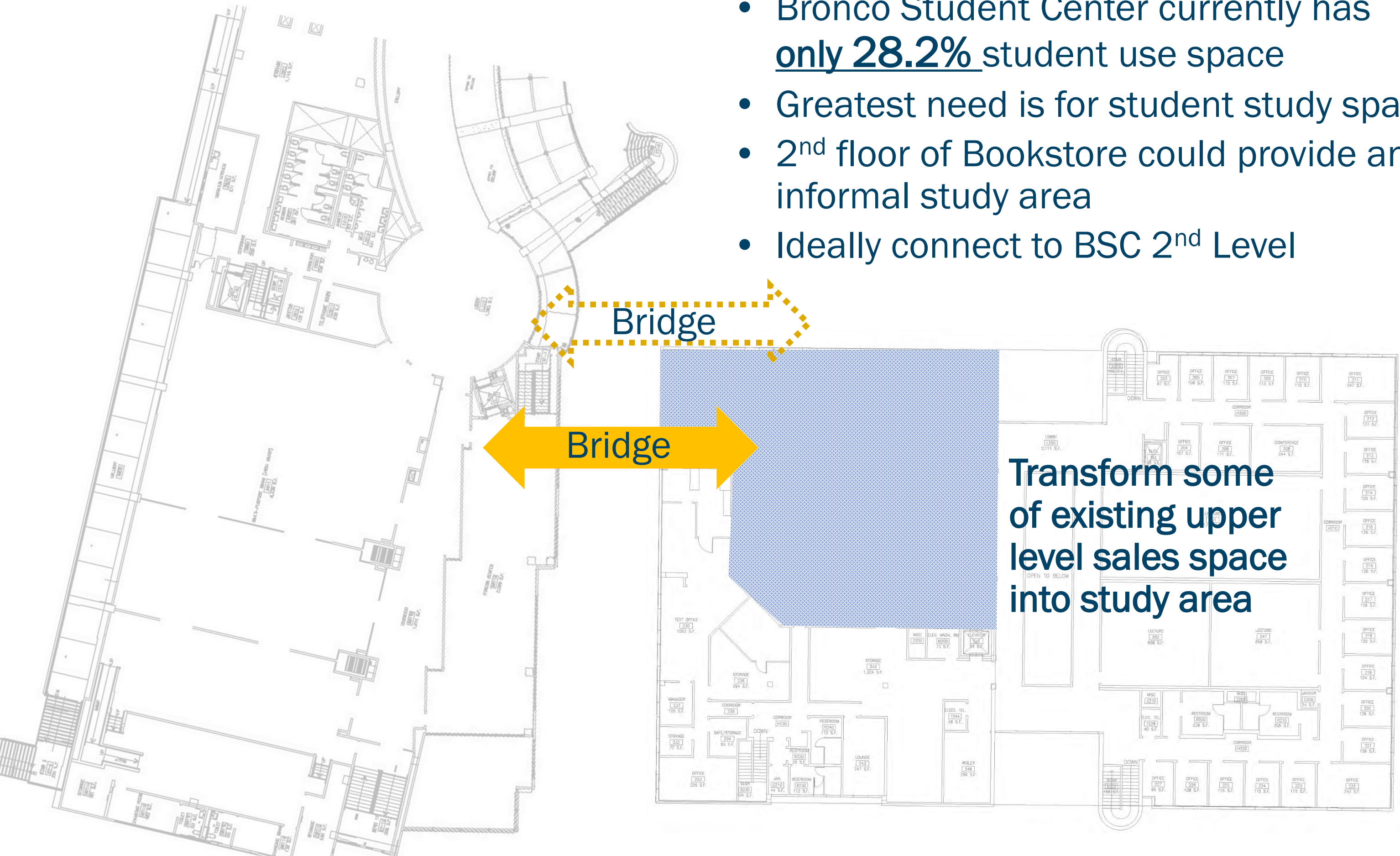
Near Term: Phase II - Interior Study Space

- Bronco Student Center currently has only 28.2% student use space
- Greatest need is for student study space
- 2nd floor of Bookstore could provide an informal study area
- Ideally connect to BSC 2nd Level



Near Term: Phase II

- Bronco Student Center currently has only 28.2% student use space
- Greatest need is for student study space
- 2nd floor of Bookstore could provide an informal study area
- Ideally connect to BSC 2nd Level

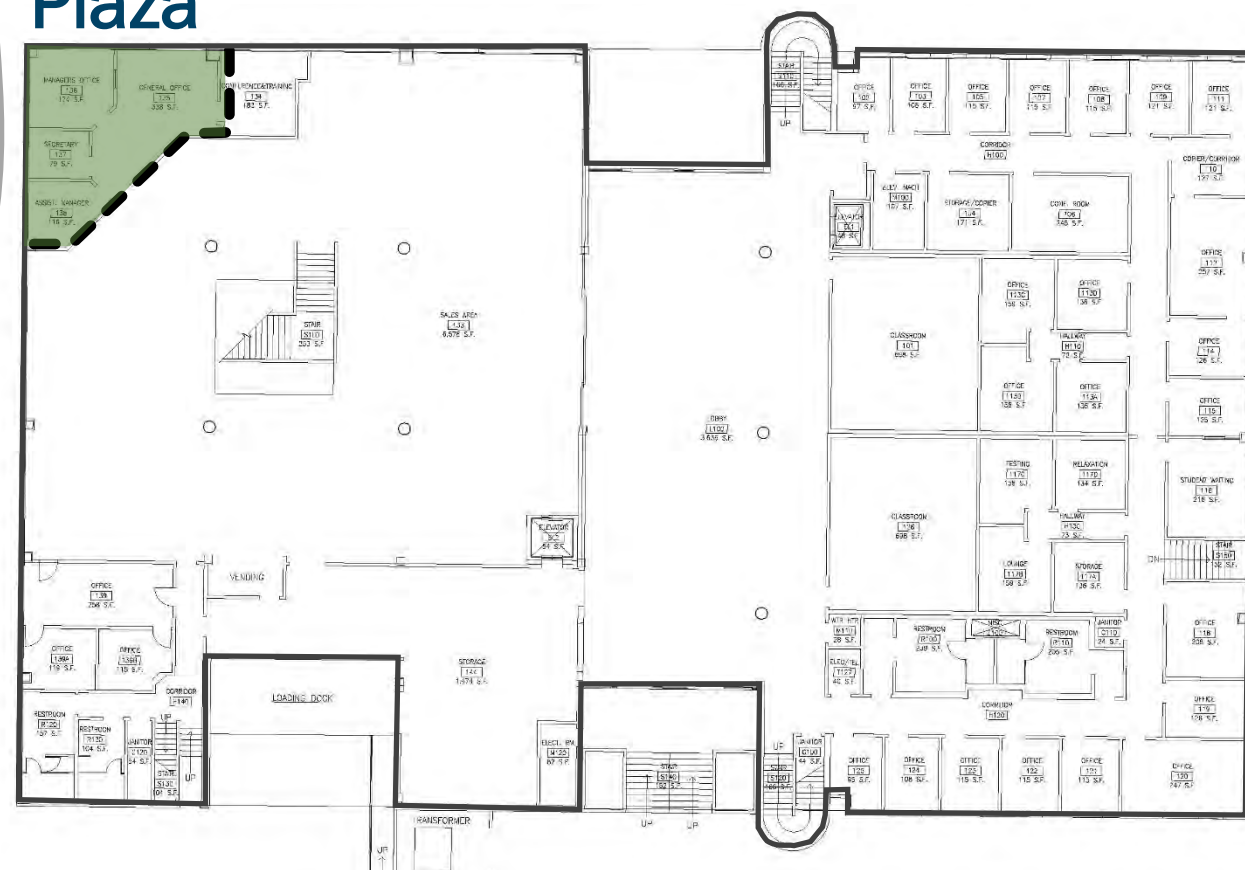


Near Term – Phase II

Lowest Impact

- Open building corner
- Create small plaza at the first floor
- Bridge connecting into the second floor

Plaza



First Floor

Bridge 1



Second Floor

Near Term – Phase II

Lowest Impact

- Open building corner
- Create small plaza at the first floor
- Bridge connecting into the second floor

Plaza

Move existing uses
into storage space
or to second floor

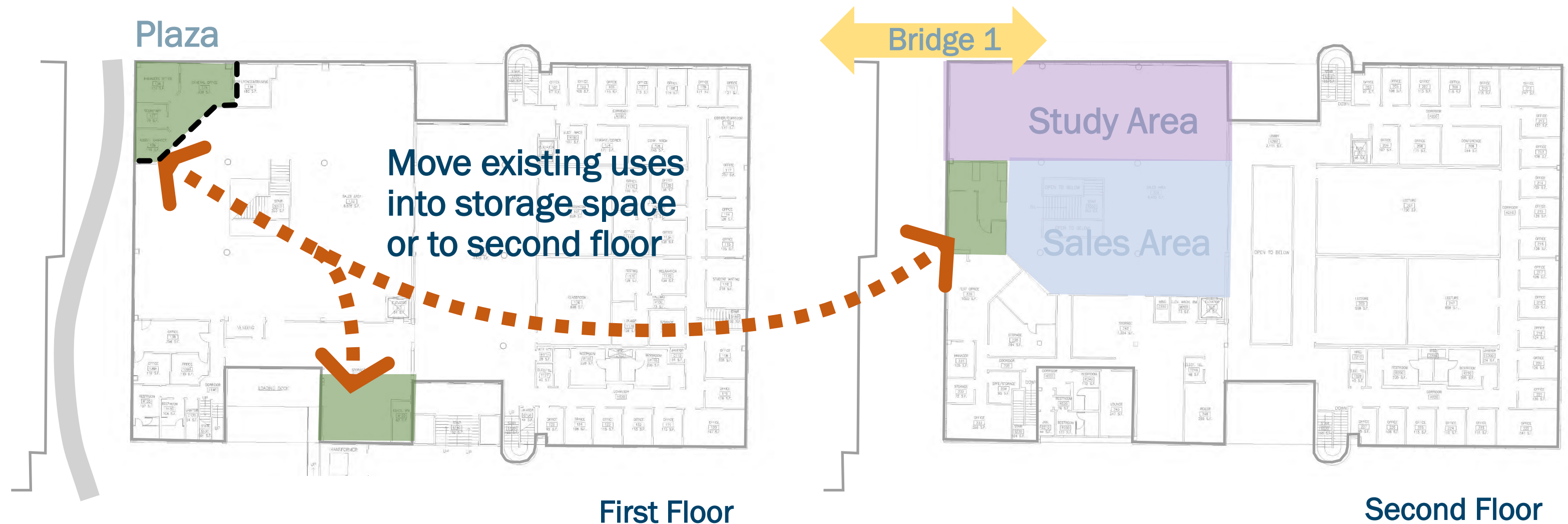
Bridge 1

Study Area

Sales Area

First Floor

Second Floor

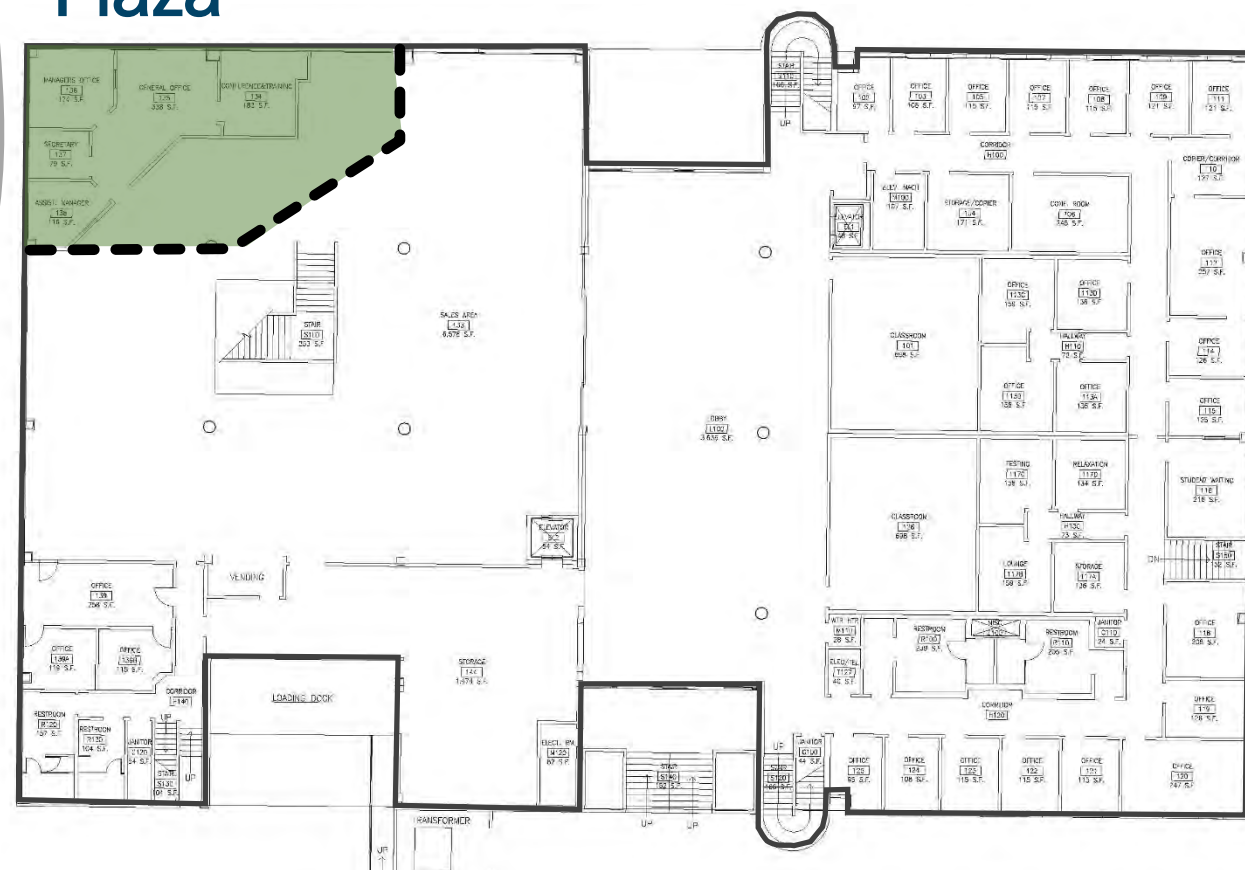


Near Term – Phase I

Higher Impact

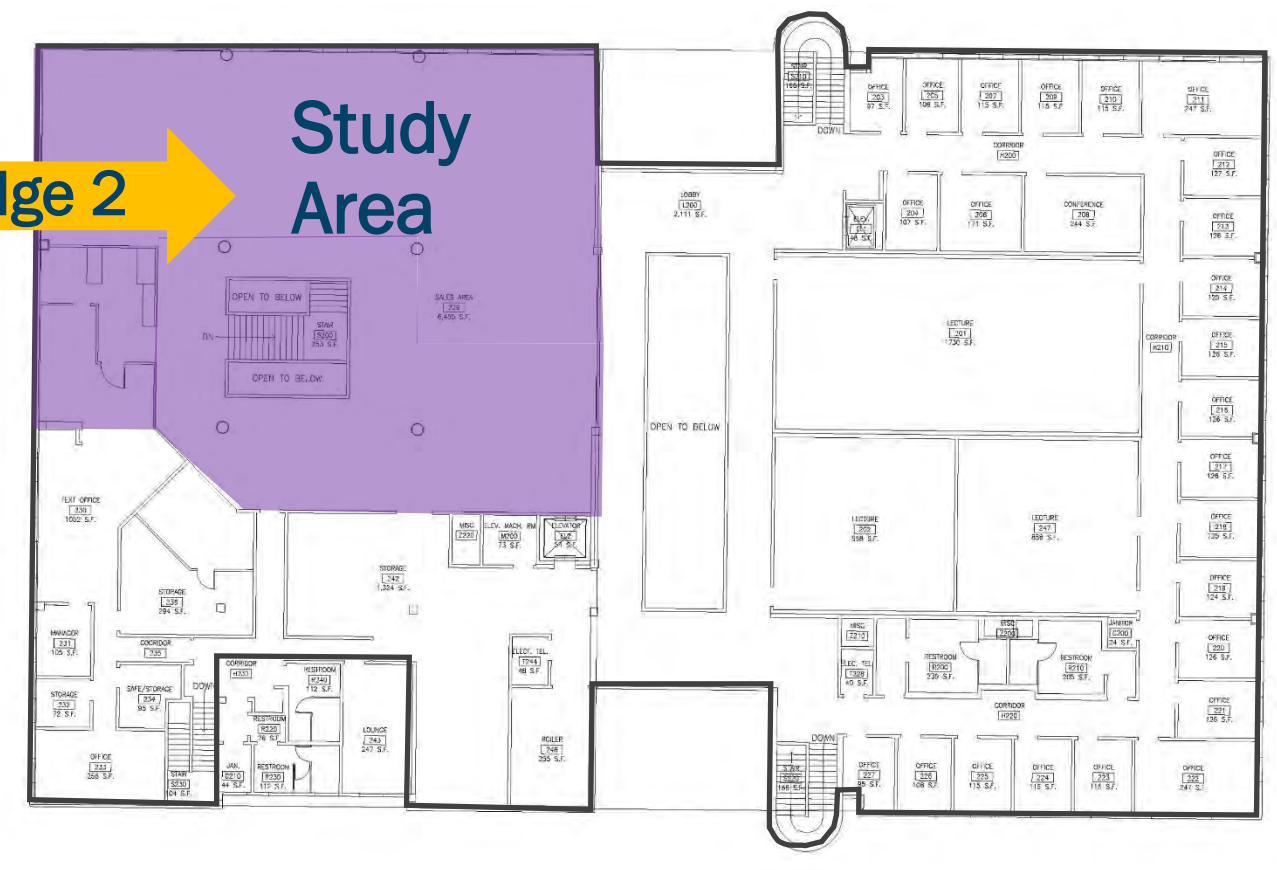
- Larger plaza at the first floor
- Bridge connecting into the second floor existing sales area

Plaza



First Floor

Bridge 2



Second Floor

Near Term – Phase I

Higher Impact

- Larger plaza at the first floor
- Bridge connecting into the second floor existing sales area

Plaza

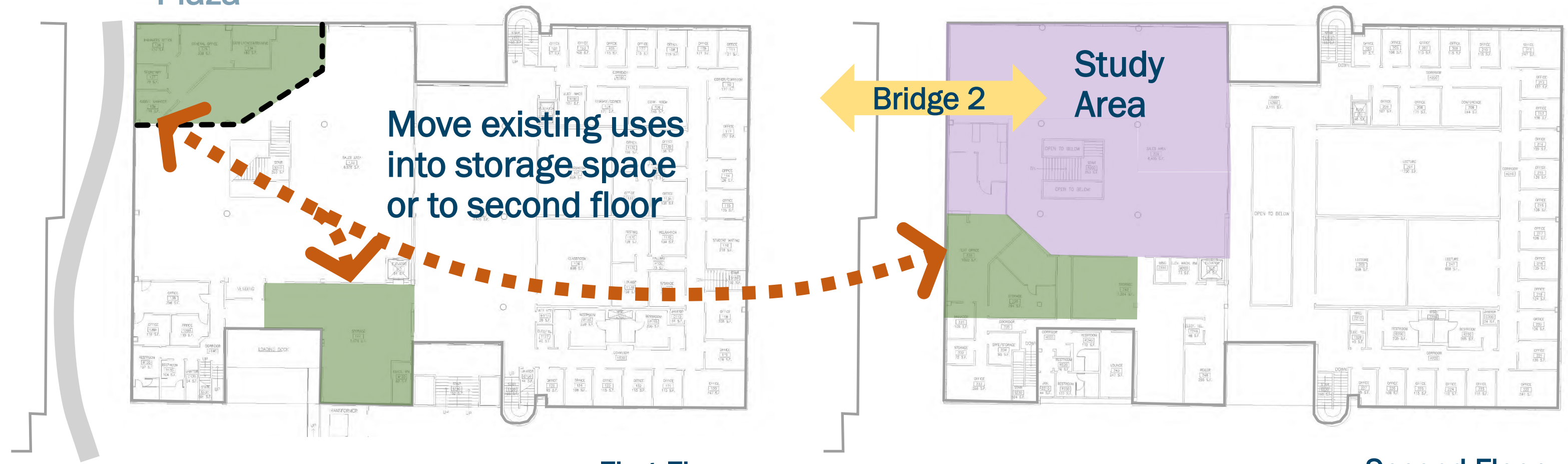
Move existing uses into storage space or to second floor

Bridge 2

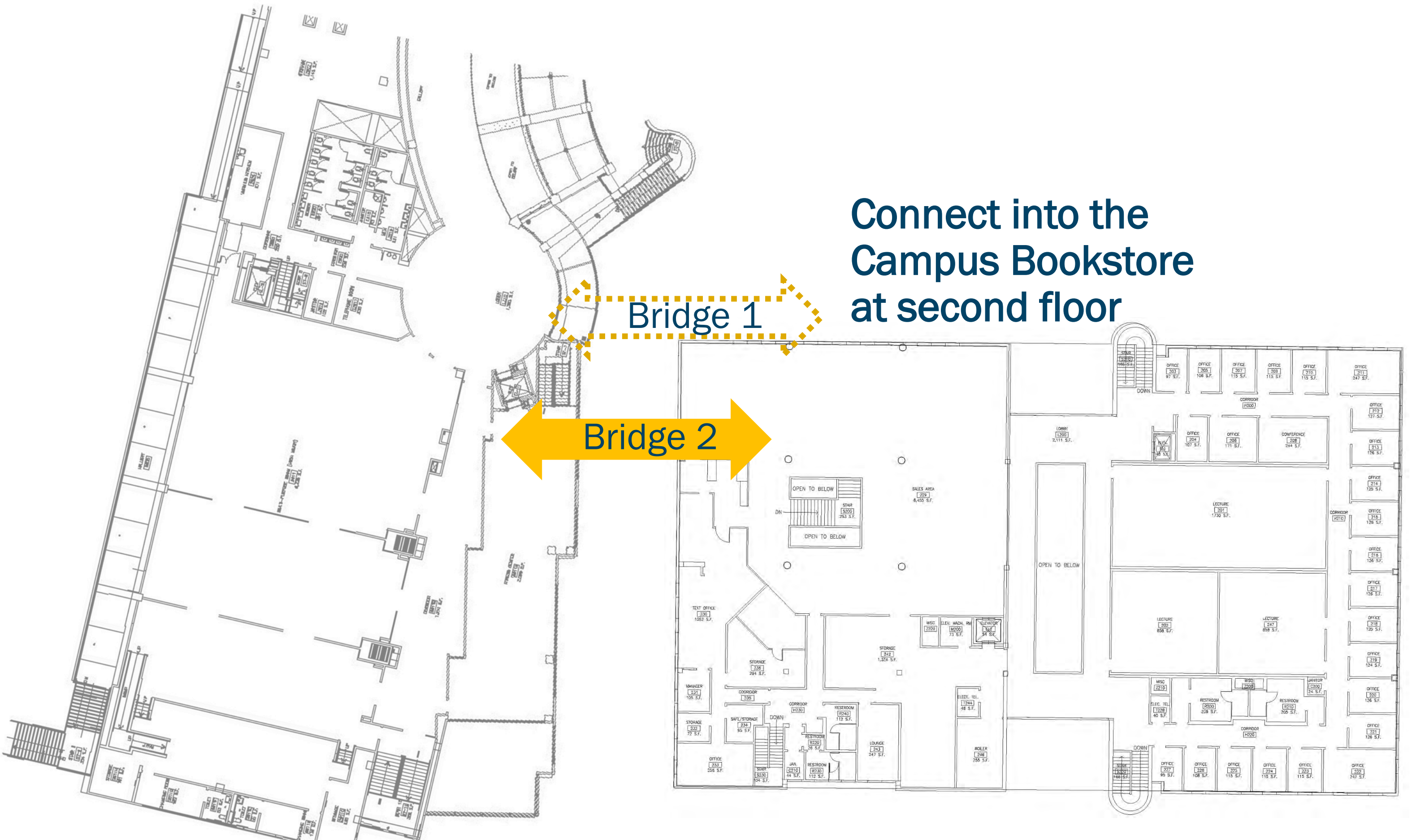
Study Area

First Floor

Second Floor



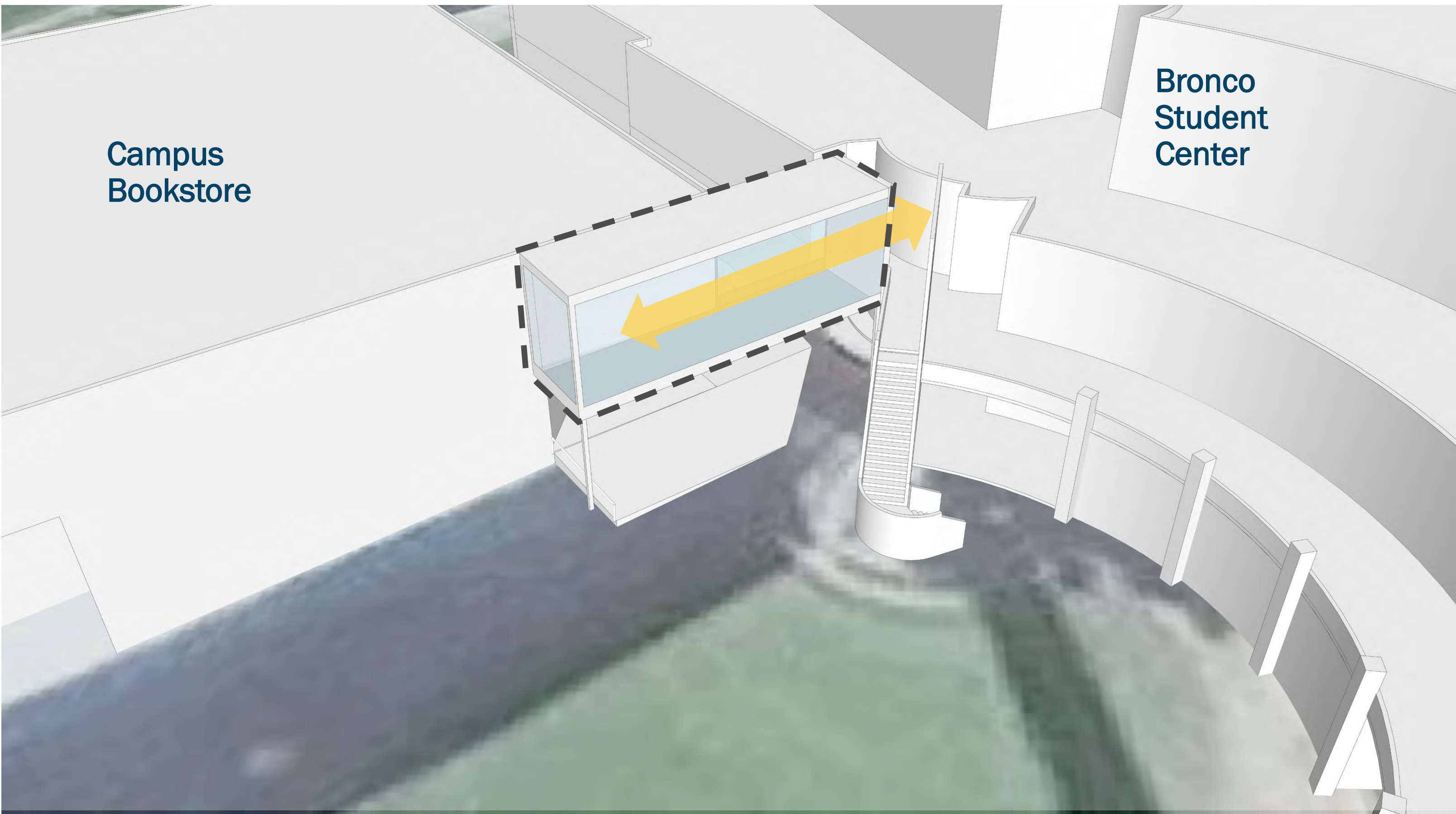
Near Term: Phase II - Connecting Bridge Options



Connect into the Campus Bookstore at second floor

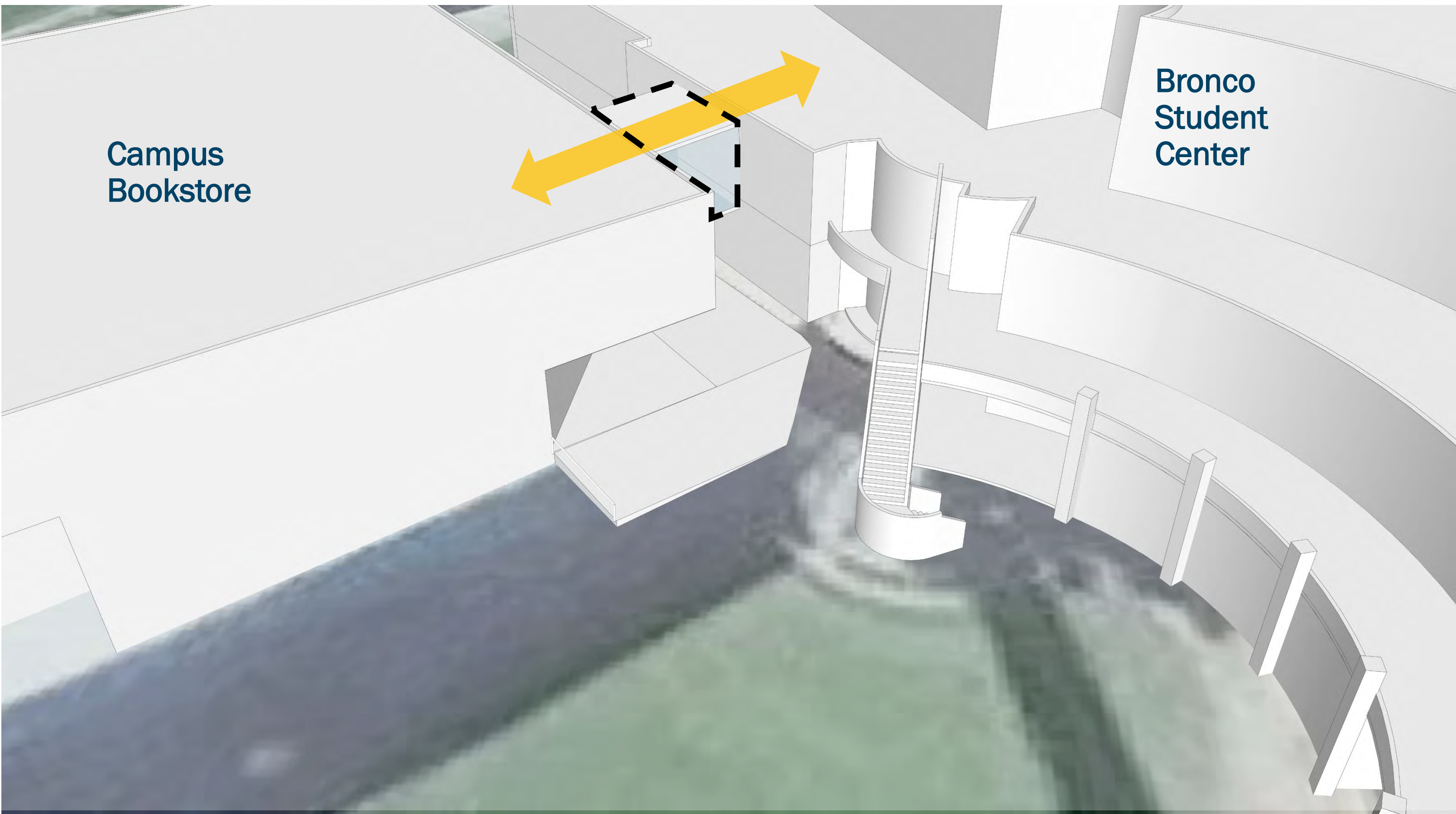
Near Term: Phase II

Bridge Option 1 – accommodates greater floor level differences (*maybe not feasible*)



Near Term: Phase II

Bridge Option 2 – requires a close match in floor levels (*maybe not feasible*)



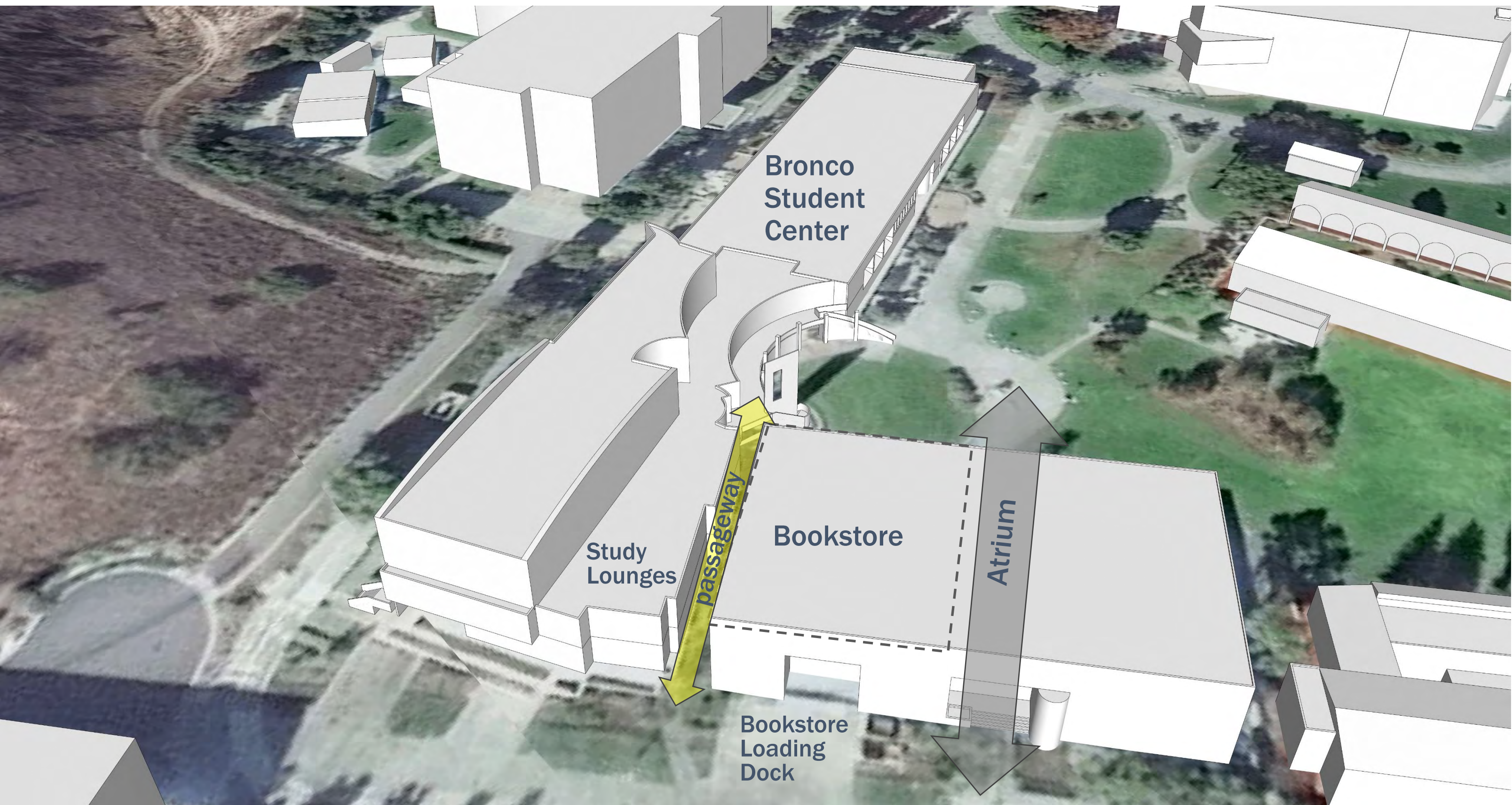
BSC Expansion Studies

Campus Master Plan

Study Lounge Expansion + Bookstore Modification

*Requires Bookstore Relocation & Partial Demolition of the Building
Proposed as a Phase 2 (2025-2030) Campus Master Plan Project*

Mid-term: Existing Conditions



Mid Term: reduce Bookstore 'obstacle'

Bookstore plans to move to Mobility Hub – Welcome Center with satellite locations



Mid Term: expand BSC study lounges

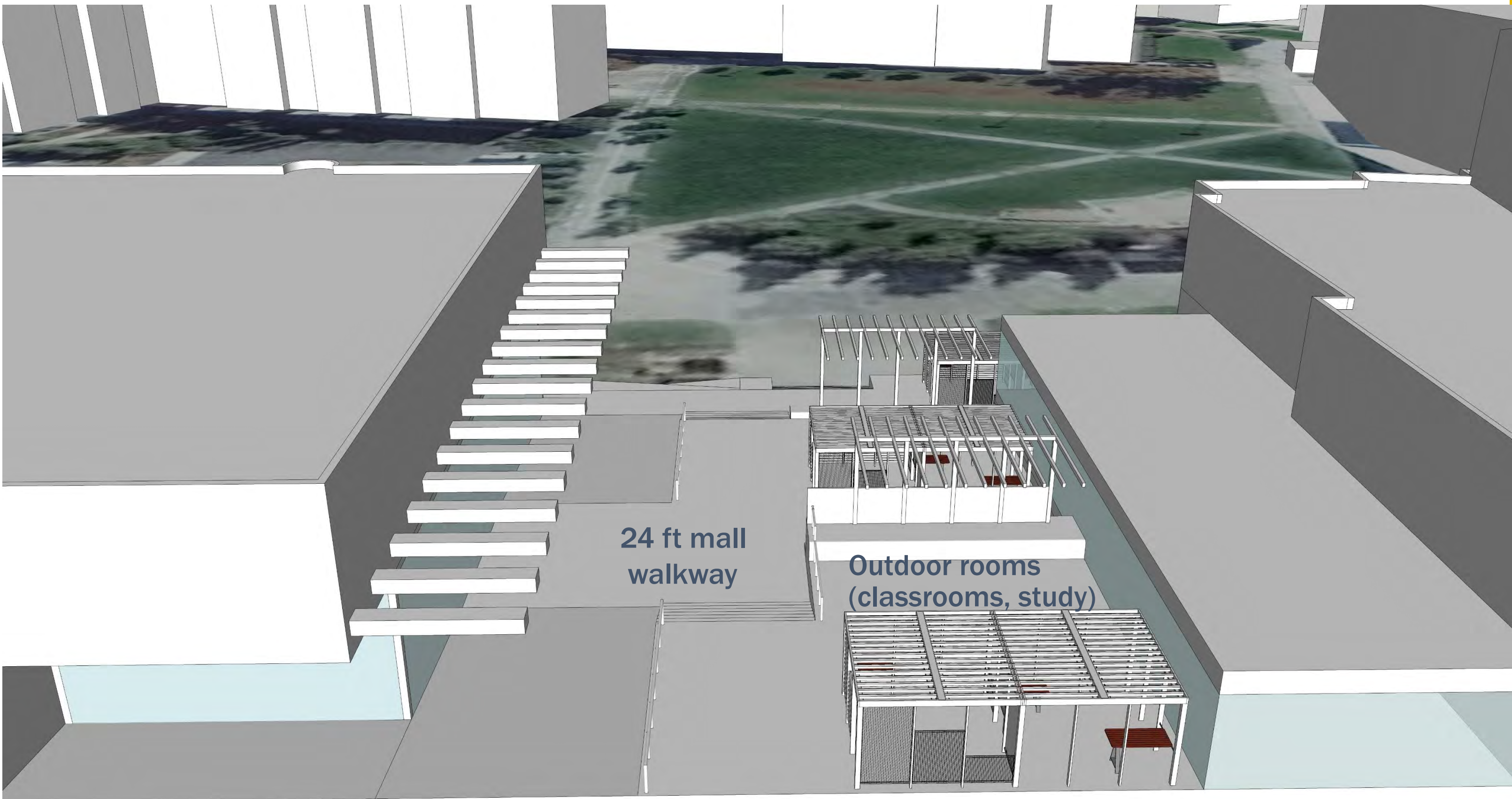
Expands outdoor study-seating space & widens north-south connecting path



View from south looking north

Mid Term: expand BSC study lounges

Expands outdoor study-seating space & widens north-south connecting path



View from north looking south

Landscape Forms: Module

