



International Center – Mobile Display

Device Inventory

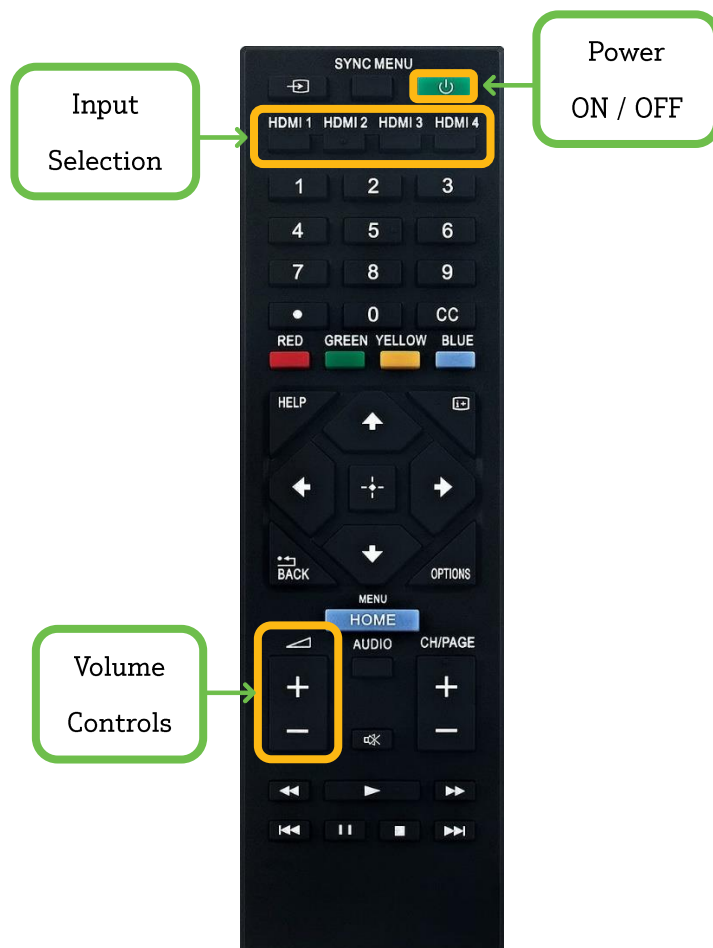
You should find the following devices in 1-104 (if any are missing, please contact (909)869-4040 ext.4040):

- Logitech Meetup (for video conferencing)
- PC (Bronco ID Login Required)
- Wireless Presentation (Solstice device)
- Remote Control (for display and input selections)
- Wireless Keyboard / Mouse (for PC)

Input Selections

HDMI 1	PC
HDMI 2	Wireless Presentation
HDMI 3	Laptop Connection

Display Controls



Wireless Presentation

Setting up a personal laptop for wireless presentation can be done by first connecting your laptop to the eduroam Wi-Fi network and following the on-screen prompts when switching the display to HDMI-2.

Quick Step-by-Step:

1. Turn ON the display.
2. Switch input to **HDMI-2**.
3. Download Mersive Solstice (www.mersive.com/download)
4. *For MAC: You will need to allow screen sharing permissions for Mersive Solstice in your system settings under **Privacy and Security > Screen Recording**.*
5. Search for 1-104 in the app and click on the name.
6. Type the four-digit code shown on the display.
7. *For MAC: You may be required to finalize the connection through **Screen Mirroring in Control Center** after you're connected in the app depending on your system version.*

Need some extra help?

Call (909) 869-4040 | www.cpp.edu/classroomhelp

CalPolyPomona



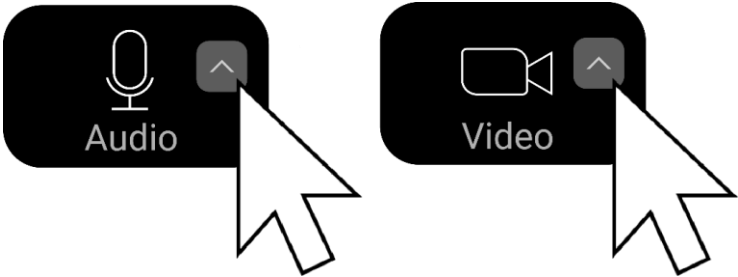
International Center – Mobile Display

Using the Logitech Camera in Zoom

The Logitech camera mounted below the TV can be used in Zoom meetings hosted on the computer connected to the **HDMI 1** input.

Use the table below to reference the devices to use in Zoom meetings.

<i>Device Type</i>	<i>Device Name in Zoom</i>
Camera	Logitech Meetup
Speaker	TV Speakers
Microphone	Webcam Microphone



Select a Speaker

✓ TV Speakers

Same as System

Select a Camera

✓ Logitech Meetup

Same as System

Select a Microphone

✓ Webcam Microphone

Same as System

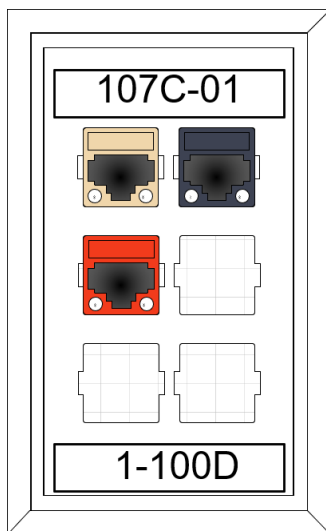
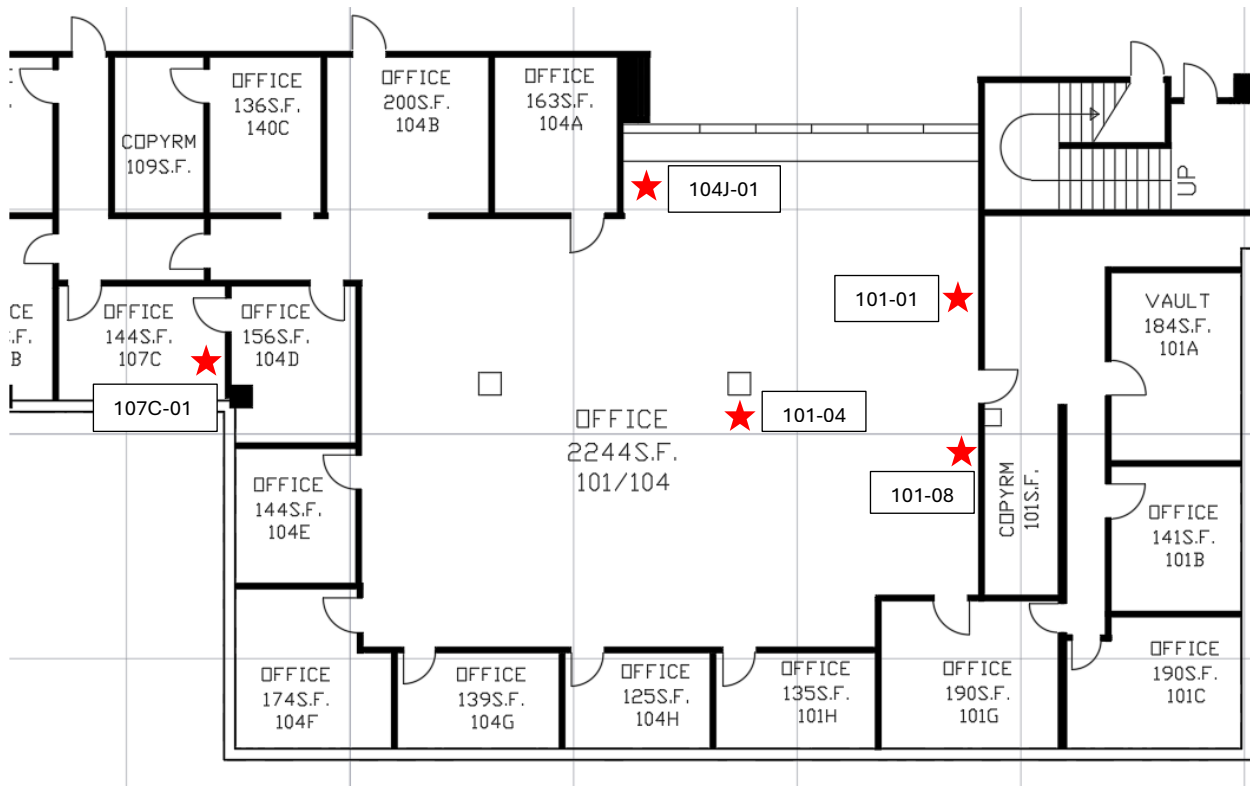


International Center – Mobile Display

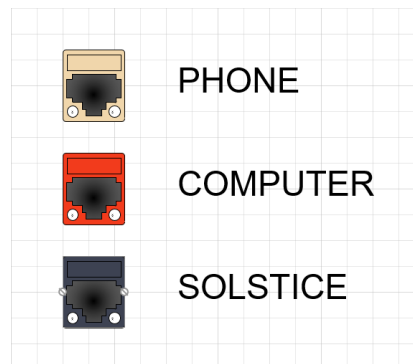
Moving the Display

One of the advantages of the new display is that it can be placed in a few selected areas to allow support for different collaborative events using the **Wireless Presentation (i.e. Solstice)** feature.

Below is a map of the different areas where this display can be connected indicated by stars:



Each of the designated areas will have a wall plate with a corresponding number assignment. Each wall plate includes three color coded inputs that will need to be connected to the correct device to work with the mobile display.



Need some extra help?

Call (909) 869-4040 | www.cpp.edu/classroomhelp

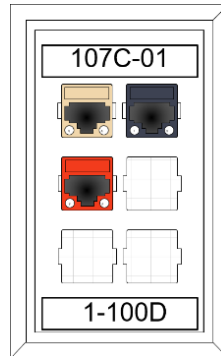
CalPolyPomona



International Center – Mobile Display

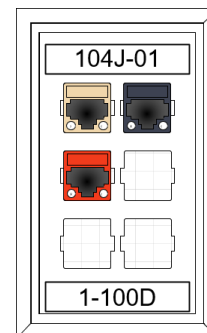
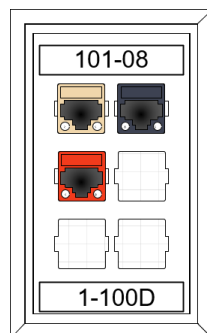
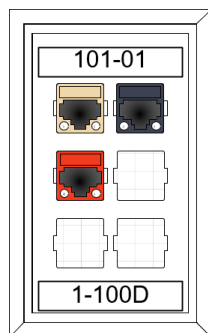
Conference Room Wall Plate:

This wall plate is intended to be used stand alone.



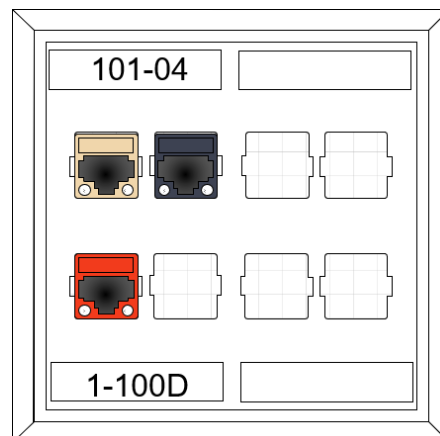
Open Room Wall Plates:

These wall plates are intended to be used stand-alone, but being that these are in an open space, they can double as a secondary display to the main projector via **Wireless Presentation** using the presenter's laptop.



Main Presentation Wall Plate:

This wall plate is intended to be used as a secondary display to the main projector via **Wireless Presentation** using the presenter's laptop.



Need some extra help?

Call (909) 869-4040 | www.cpp.edu/classroomhelp

CalPolyPomona