



49A: FPM Conference Room Reference

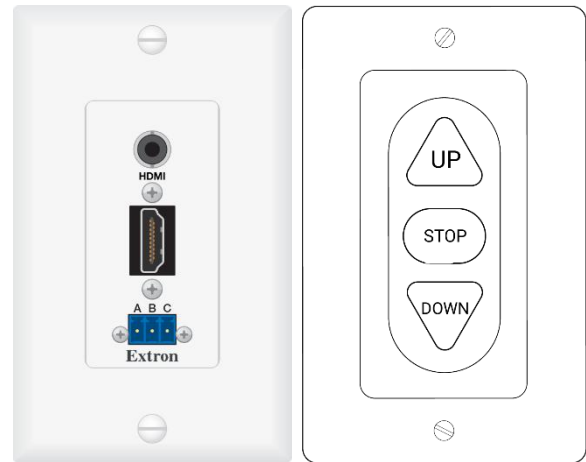
Getting Started

The AV system for 49A is designed to be controlled from a dedicated work area on the South side of the room and supports a single HDMI laptop connection for video and a 3.5mm headphone jack for audio.

The projector screen can be lowered using the control plate on the East wall to the right of the white board.

Buttons are labelled **UP**, **STOP**, and **DOWN** where UP and DOWN raise and lower the screen to predetermined Min and Max heights.

To stop the screen at any point within the Min/Max range, simply press the STOP button.



Video and Audio



The projector itself can be turned on using the black remote affixed to the South wall above the laptop port using the **Green ON** button (1).

Volume for presentations containing audio can be adjusted using the **VOL +** and **VOL -** buttons on the remote (2).

PLEASE NOTE: VOLUME MAY ALSO NEED TO BE ADJUSTED ON YOUR LAPTOP. IF YOU ARE NOT HEARING YOUR PRESENTATION, AND YOU HAVE ALREADY CHECKED THE PROJECTOR VOLUME, MAKE SURE YOUR COMPUTER IS NOT MUTED.

Shutting off the projector requires you to press and hold the **Red Standby** button (3) and confirm the prompt that shows up on the screen using the **Enter** button (4).

Normally, video inputs will not need to be changed for this system. If you run into any issues with the video being blank, press the **HDMI 1** button (5) and make sure the input has changed appropriately on the screen.

PLEASE NOTE: ALSO CHECK TO MAKE SURE THAT THE CABLE CONNECTING YOUR LAPTOP TO THE WALL OUTLET IS NOT KNICKED, BENT, OR FRAYED, AND IS PROPERLY SEATED ON BOTH SIDES.

For any other issues, please contact the Classroom Team at extension 4040.