



cppIT

DIVISION OF INFORMATION TECHNOLOGY

News Bytes

25Live Comprehensive Scheduling

Campus-wide classroom, campus space, and event scheduling

25Live is a web-based scheduling program that optimizes the use of classroom and campus space by providing a single point of entry for collaborative scheduling of classrooms and other multi-purpose spaces, while also providing data analytics. With 25Live's implementation planning phase underway, the Space & Event Management IT Governance Working Group will

announce a go-live date soon. The IT Governance group provides recommendations regarding general policies and procedures associated with the development of web environments. While the group does not oversee the look and feel of websites, it does oversee the policies associated with their use. For more information, go to the [Space & Event Management IT Governance](#) website.



E-Signatures expedite processes

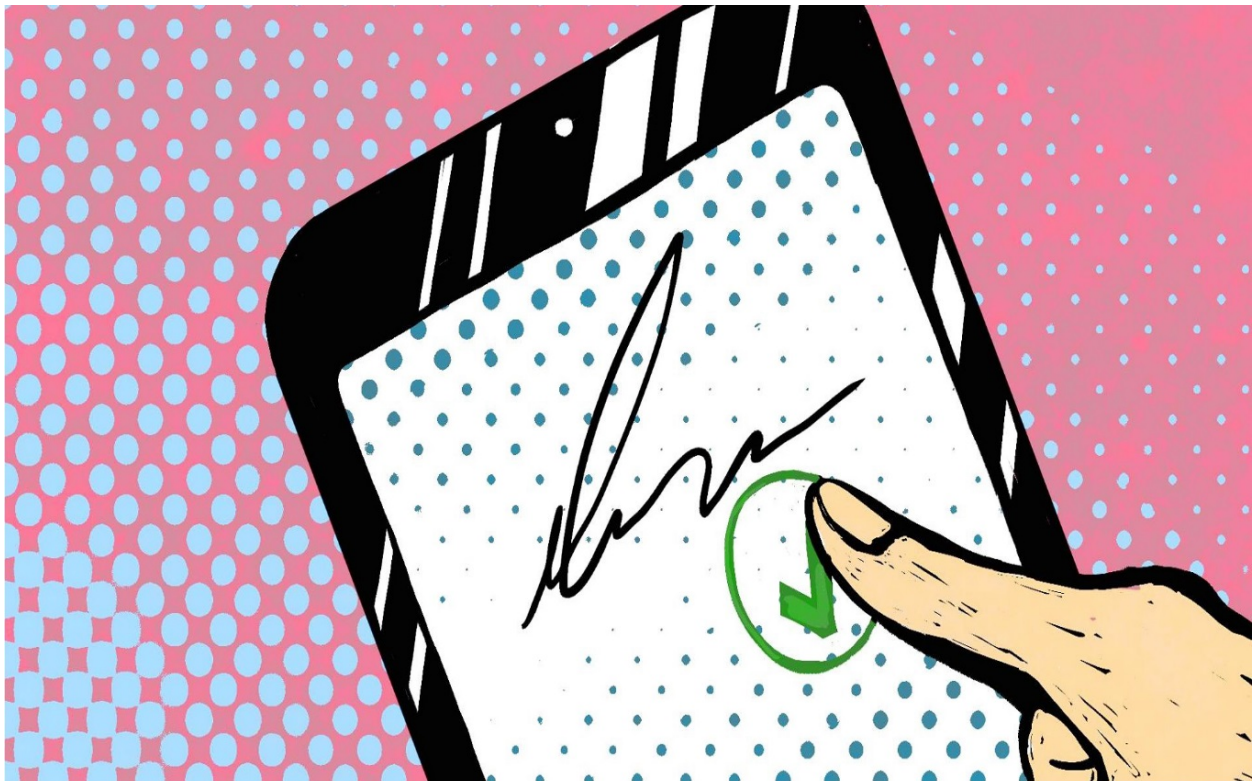
Approve, sign, send documents anywhere, anytime

The recent implementation of DocuSign, a digital signature solution, expedites the electronic exchange of forms, contracts, and signed documents. DocuSign's features include workflow automation, authentication services, and user identity management. In addition to saving paper, the campus community will also enjoy the benefit of:

- 24/7 availability and access from anywhere

- Reliability (No more lost documents!)
- Streamlined document routing
- Automated tracking, including notifications and reminders
- Ending paper clutter

For more information or to set up an electronic workflow process in your office, please contact the [IT Governance Administrative Technology Working Group](#).



George Kavallines



Graduation Rates Dashboard

A new Tableau dashboard, created by the [Office of Institutional Research, Planning & Analytics](#) in collaboration with the [Office of Student Success](#) and [ARAR](#), shows progress towards [Graduation Initiative 2025](#) targets. This [public dashboard](#) also meets WSCUC accreditation requirements with regard to making graduation rate outcomes available to the general public. www.cpp.edu/~irpa/dashboards

Campus "Cloud First" Strategy

IT's "Cloud First" strategy positions CPP to thrive in the ever-changing landscape of technology. Increasing business-application agility, scalability, and effectiveness via global, on-demand access to resources, new cloud services being launched include a Performance Optimized Data Center and a pilot program providing Amazon-based virtual servers for faculty computing needs. For more info, contact [Dave Drivdahl](#), Director of Systems.





Love information? Love technology? Love Cal Poly Pomona? So do we! Stay in the know as we work together with the campus community to provide innovative and strategic technology to strengthen and further the university's polytechnic identity and learn-by-doing educational approach.

Copyright © 2018 Cal Poly Pomona, All rights reserved.

For inquiries, see:

<http://www.cpp.edu/~it/help/index.shtml>

Disclaimer: Cal Poly Pomona does not endorse or recommend any commercial products, processes, or services. Cal Poly Pomona's IT newsletter provides links to other Internet websites for informational purposes only. If users select a link to an external website, they are leaving the Cal Poly Pomona website and are subject to the privacy, security, and accessibility policies of the owners/sponsors of the external website.