



In the College of Environmental Design, we design the future. As California's largest public college of environmental design and part of the No. 1 polytechnic in the nation for social mobility, we advance access to design and planning and prepare students to shape the future of our shared built and natural environments with resiliency, justice and a commitment to sustainability and social responsibility.

RANKINGS



#1

Bachelor's degrees earned by Latino/a/x students in architecture

#4

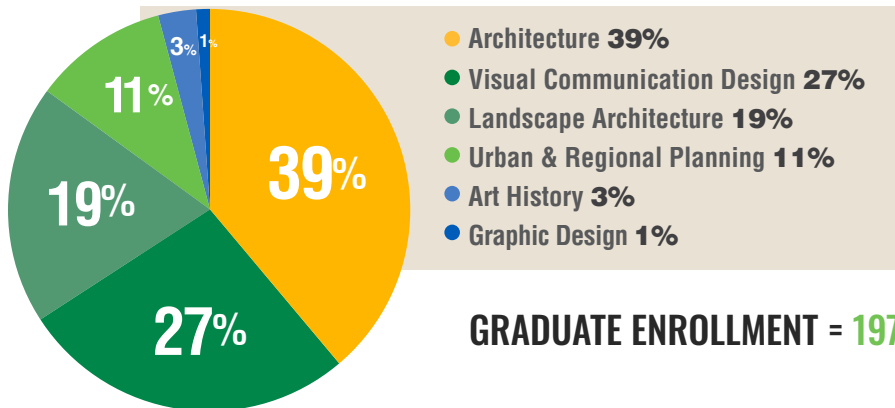
Urban & regional planning program with largest percentage of minority representation

#10

Landscape architecture schools most hired from

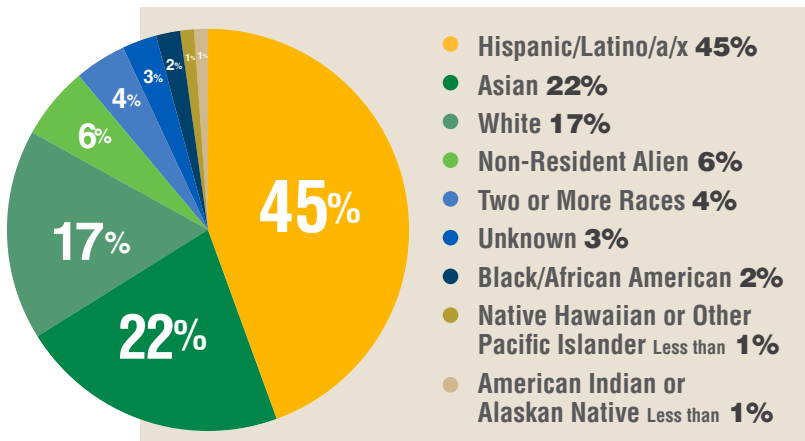
Source: Hispanic Outlook on Education, 2020; Planetizen Guide to Urban Planning Graduate Programs, 2019; DesignIntelligence, 2019-20

UNDERGRADUATE ENROLLMENT = 1,874



GRADUATE ENROLLMENT = 197

UNDERGRADUATE STUDENT DIVERSITY



Diversity and enrollment data is from fall 2022.

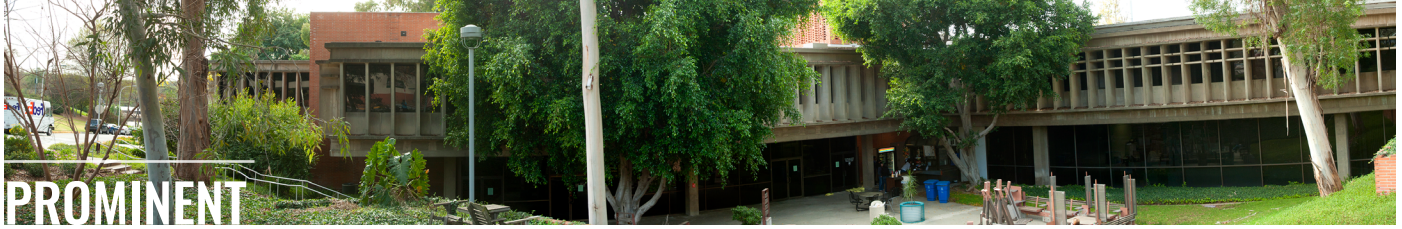
53%

FIRST-GENERATION STUDENTS

2021 GRADS

333 BACHELOR'S

37 MASTER'S



PROMINENT
ALUMNI



SEAN O'MALLEY
'86 LANDSCAPE ARCHITECTURE
SWA Laguna Beach, managing principal



MANUAL MUNOZ
'09 URBAN & REGIONAL PLANNING
City of La Mirada, director of community development



WENDY ROGERS
'88 ARCHITECTURE
LPA Design Studios, CEO & CTO

TOP EMPLOYERS

- AECOM
- BrightView
- California Department of Transportation
- Designory
- Gensler
- HMC Architects
- LPA Design Studios
- OJB Landscape Architecture
- SWA Group
- Walt Disney Imagineering

POINTS OF PRIDE

The Lyle Center for Regenerative Studies offers students 16 acres of "living laboratory" for interdisciplinary studies and research of sustainable environmental design.

Students have numerous opportunities to study abroad, with programs in Italy, Denmark, France, China and Japan.

Neutra VDL Studio & Residences, a National Historic Landmark stewarded by our college, provides students with a great opportunity to explore the architecture, art and cultural complexity in southern California.

In our design studios, students engage in hands-on learning, building their creative, technical, social and analytical skills to solve salient design problems.

CONTACT US



MARY ANNE ALABANZA AKERS
DEAN
maakers@cpp.edu



JENKINS SHANNON
SENIOR DIRECTOR OF DEVELOPMENT
jshannon@cpp.edu

VISIT



JOIN
OUR TEAM



GIVE

