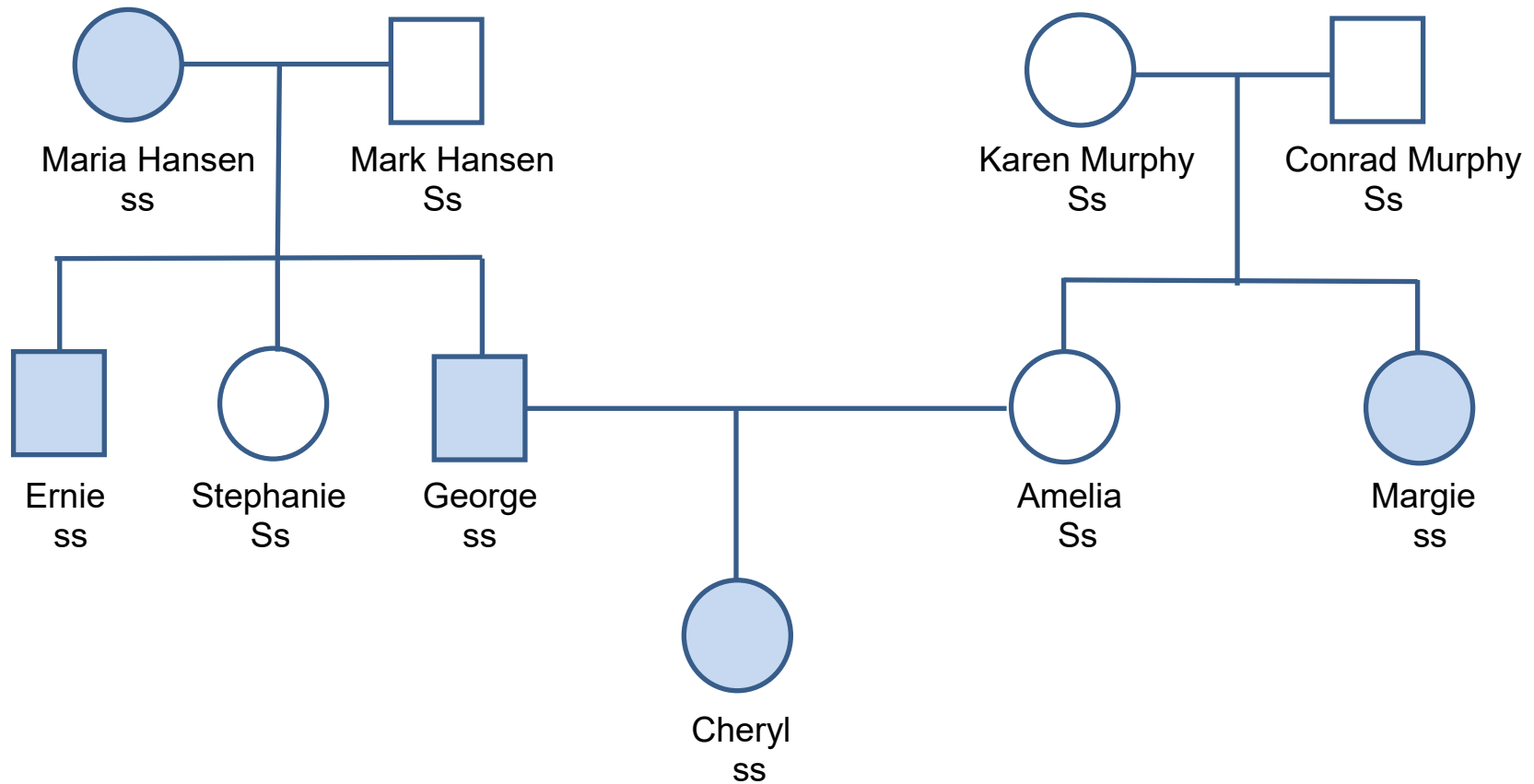


### The Hansen Family Pedigree (Teacher Master)



Shade the circle or square of anyone in the Hansen family who has a bad rash. If the pattern seems to indicate that this skin condition is an inherited trait, write the two-letter allele combination (SS, Ss, or ss) underneath each family member's name. (A capital letter represents a **dominant** allele, and a lowercase letter represents a **recessive** allele.) If more than one allele combination is possible for an individual, write both combinations under that person's name.