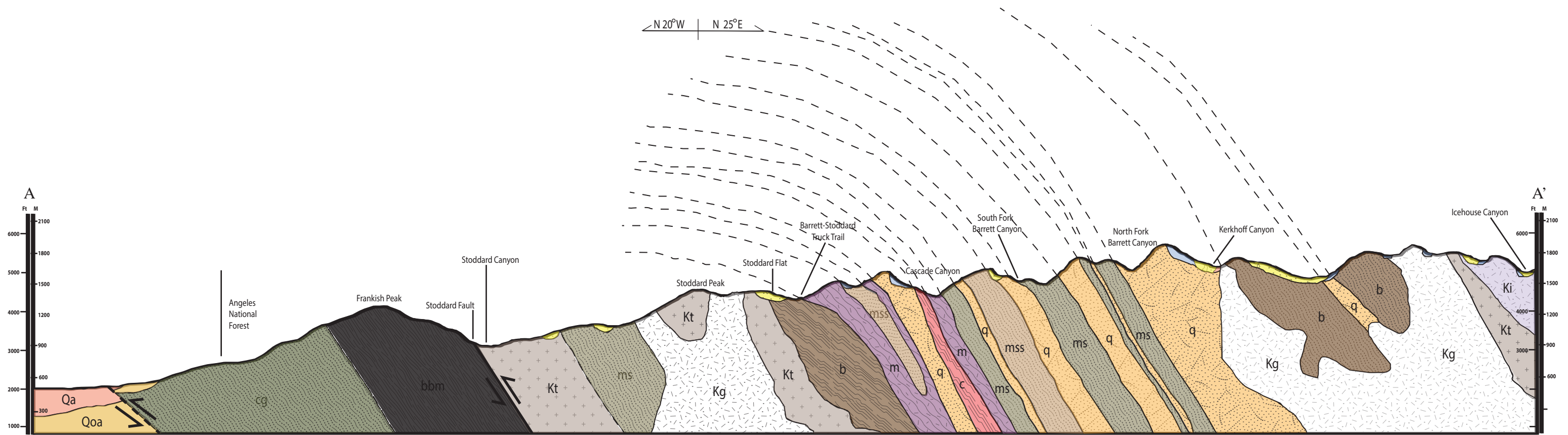


Southwest to Northeast Structural Cross Section A-A' through San Antonio Terrane

Scott Bradley Zylstra, 2017



Cross section above, and roughly the same area photographed below showing Ontario Ridge metasediments with a potential large-scale fold projected upwards. For legend, see Plate I. Dotted lines indicate uncertainty. No vertical exaggeration.