

The logo for Cal Poly Pomona is a large, stylized arrow pointing to the right. It is composed of several overlapping triangular shapes in shades of blue, green, and yellow. The text "Cal Poly Pomona" is positioned to the left of the arrow.

**Cal Poly**  
**Pomona**

# **Safer Return Update**

Frances Teves

AVP for Government and External Affairs/Safer Return Coordinator

Academic Senate

Wednesday, September 21, 2022

# Situational Awareness

County	CDC Community Level (Low, Medium, High)	09/19/2022				
		New Cases Reported*	Weekly Cases per 100K (7-Day Average)*	Positivity Rate (7-Day Rate)*	Current Hospitalizations*	% of Population Fully Vaccinated (5 yrs. and older)**
Los Angeles	● Low	725***	13.7	4.2%***	674***	78.0%
Orange	● Low	307	9.5	7.2%	150	77.7%
San Bernardino	● Medium	237	13.4	7.0%	124	63.5%
Riverside	● Low	319	12.9	9.4%	118	64.7%
Statewide		4,854	12.1	6.20%	2,580	78.0%

Primary Source: CDC COVID Data Tracker: COVID-19 Integrated County View (Accessed: September 19, 2022), CDPH Statewide Dashboard (Accessed: September 19, 2022), LACDPH Press Releases (Accessed: September 19, 2022)

\*Current data accessed from the CDPH Statewide COVID-19 Dashboard

\*\*Current data accessed by the CDC COVID Data Tracker

LA County Updates: Daily - CALIFORNIA All Updates: Tuesday's & Friday's - CDC Updates: Daily 8pm ET

\*\*\*Current data accessed LACDPH Press Releases, LAC COVID-19 Dashboard, and LACDPH Twitter

## Los Angeles County – Previous Data Points

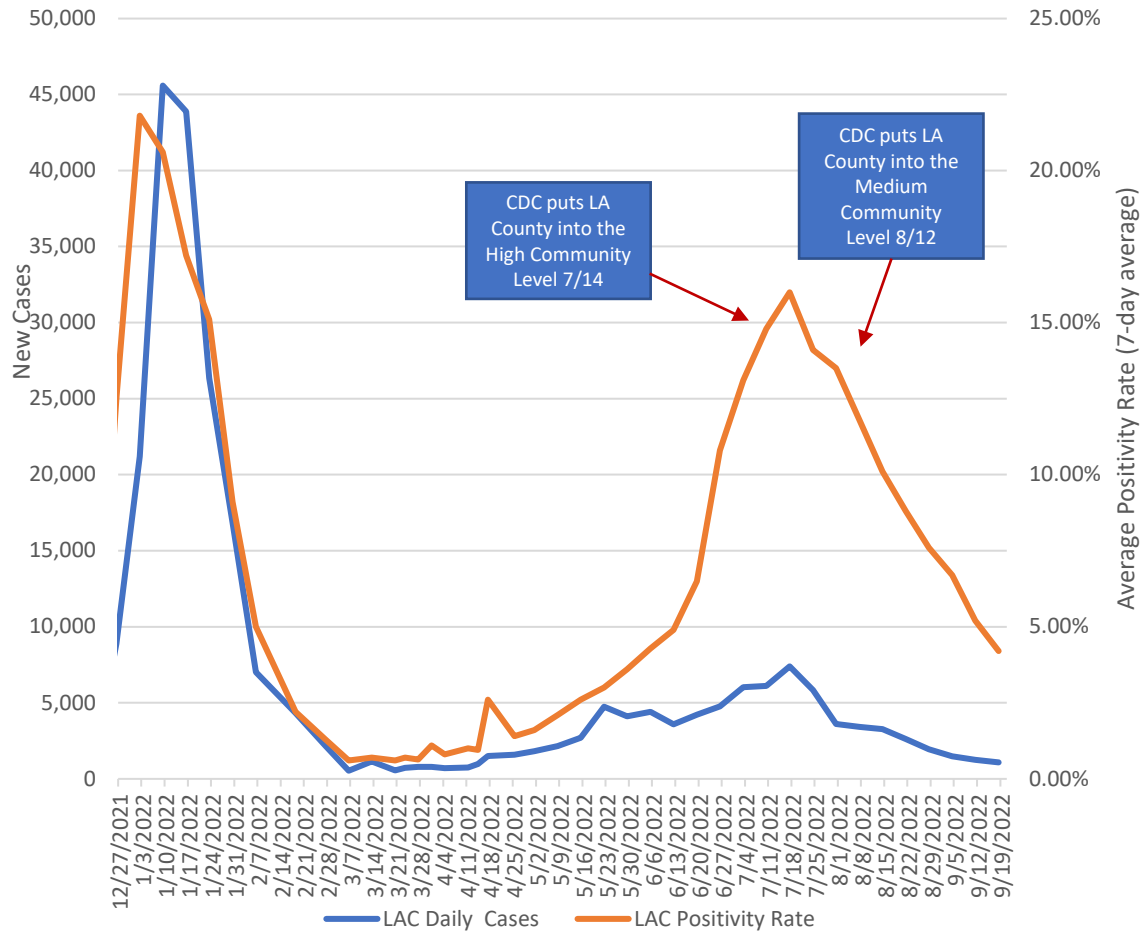
Date	Weekly Cases Per 100K (7-day average)	Positivity Rate	Hospital Admissions
1/11/2022	436.6	18.6%	3,912
1/12/2021	130.7	17.6%	7,906
7/11/2020	29.4	9.2%	2,056

## Cal Poly Pomona Vaccination Rates

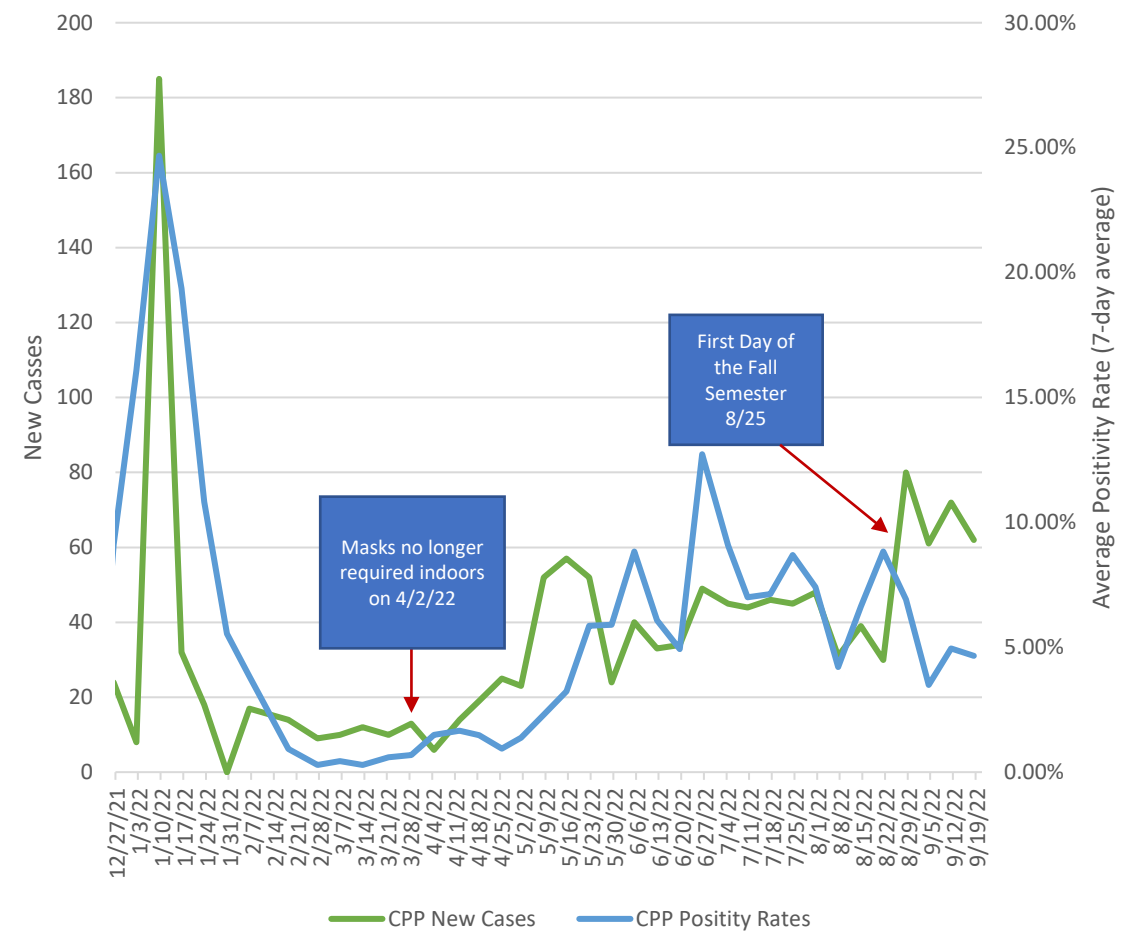
Term	Overall Vaccination Rate
Fall 2021	85%
Spring 2022	76.5%
Fall 2022	68.2%

# New Cases and Positivity Rate in our Communities

Los Angeles County – New Cases and Positivity Rate



Cal Poly Pomona - New Cases and Positivity Rates



# Public Health Requirements

We required to follow the **strictest order issued at local, state or federal level.** We work to align requirements and guidance into our Safer Return [Health and Safety Plan](#) as quickly as possible, especially as it pertains to isolation and quarantine requirements.

1. We are required to provide **training** to employees.
2. **Masks** are strongly recommended indoors and required in the settings below. Higher grade masks must be made available for employees.
  1. Health care and public transit.
  2. Per isolation and quarantine instructions: Individuals who test positive and/or are **exposed** must wear a mask for 10 days.
  3. As required by public health during cluster/outbreak of three (3) epi-linked cases.
3. **Testing** must be made available for symptomatic employees, those who have had a close contact, and to end isolation.
4. We are required to **notify close contacts** and **report** positive cases in accordance with public health, Cal/OSHA, legislative and Chancellor's Office requirements.
5. Implement **physical distancing** during a major outbreak as feasible.

**Source:**

1. <http://publichealth.lacounty.gov/media/Coronavirus/docs/education/GuidanceHigherEducation.pdf>
2. [http://publichealth.lacounty.gov/media/Coronavirus/docs/protocols/ExposureManagementPlan\\_HigherEd.pdf](http://publichealth.lacounty.gov/media/Coronavirus/docs/protocols/ExposureManagementPlan_HigherEd.pdf) (Rev. 7/29/22)
3. <https://www.dir.ca.gov/dosh/coronavirus/COVID19FAQs.html> (expires 12/31/22)

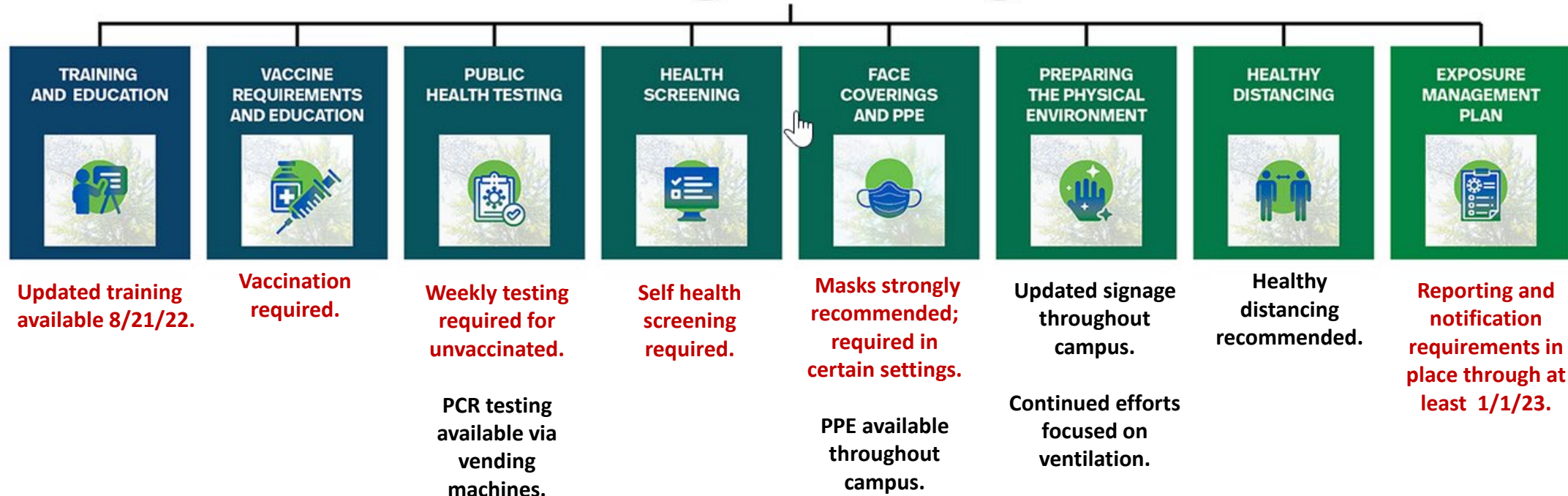
# Safer Return COVID-19 Health and Safety Plan

The University's Safer Return COVID-19 Safety and Health Risk Mitigation plan reflects a multipronged approach reflecting three categories of risk mitigation:

- **Personal measures** – individual behaviors to protect ourselves and those around us
- **Administrative measures** - processes and policies that keep people safe
- **Engineering measures** - physical measures put in place to help keep our campus safe

The **eight-pronged** approach reflects *evolving* public health orders and state requirements, best practices and scientific recommendations, and local conditions. Each mitigation together serves as multiple layers to improve our ability to keep our campus and communities safe. *The plan helps assure a safer return to campus requiring individual actions and shared responsibilities.*

## Risk Mitigation Strategies



California  
Department of  
Public Health  
(CDPH) Masking  
Guidance  
*Effective 9/23/22*

Here's when to mask in indoor crowded public spaces based on CDC Community Levels

CDC Community Level	People at lower risk for severe illness	People at higher risk for severe illness*
High	Masks recommended	Masks strongly recommended
Medium	Consider masking	Masks recommended
Low	Personal preference	Consider masking

\* Those at higher risk should consider taking additional precautions.



# COVID-19 Exposure Management – Key Points

As of 8/15/22, subject to change per public health.

1. **Students, employees and campus guests to report positive test or symptoms utilizing the [COVID-19 Self Report Form](#).** Faculty and HEERA managers should instruct students and employees accordingly. Faculty or HEERA Managers should not conduct an incident investigation or inform close contacts.
2. University **required to notify close contacts and report positive cases.** All close contacts must test between 3-5 days and wear a mask for 10 days.
3. **Close contact** is “someone sharing the same indoor space (spaces separated by floor-to-ceiling walls) for a cumulative total of 15 minutes or more over a 24-hour period during an infectious period (48 hours) of a confirmed positive case.” (Please note there are considerations for large indoor spaces – dining halls, lecture halls, auditoriums.)
4. **One positive case in the classroom can trigger a close contact notification and a masking requirement for the entire class.** Faculty should not conduct an incident investigation or inform close contacts.
5. A cluster or outbreak is defined as three (3) epidemiologically-linked cases within a 14-day period. Triggers reporting requirements, posting on LACDPH outbreak website and site visit.
6. Major outbreak of 20 or more employees requires implementation of physical distancing.

Source:

1. Close contact definition aligned between [LACDPH](#) (rev. 7/29/22) and Cal/OSHA (rev. May 2022, in effect until 12/31/22)
2. [http://publichealth.lacounty.gov/media/Coronavirus/docs/protocols/ExposureManagementPlan\\_HigherEd.pdf](http://publichealth.lacounty.gov/media/Coronavirus/docs/protocols/ExposureManagementPlan_HigherEd.pdf) (Rev. 7/29/22)

# Incident Investigation – What you need to know...

As of 8/15/22, subject to change per public health.

1. If you **test positive**, you **cannot come to campus** for a minimum of 5 days. The earliest you can return is on day 6\*\*\*, but you must wear a mask for 10 days.
2. If you had a **close contact exposure and have no symptoms**, you **can come to campus**, but you must test within 3-5 days and wear a mask for 10 days.\* Report positive test results via the [COVID-19 Self-Report Form](#).
3. If you are **experiencing symptoms**, do **not come to campus** until you have received a negative test.\* Report positive test results via the [COVID-19 Self-Report Form](#).
4. The Safer Return Incident Investigation Team must receive a COVID-19 Self-Report Form from the individual who has tested positive and/or is experiencing symptoms. The form is needed to notify close contacts.
5. There is sometimes a delay in informing close contacts based on when the information was reported.
6. COVID-19 Supplemental Paid Sick Leave (SPSL) up to 80 hours is available effective January 1, 2022 through September 30, 2022 for employees unable to work due to COVID-19 related reasons.\*\*



# Guidance for the Fall Semester

1. Keep up to date with campus safer return efforts – check [website](#), read the [newsletter](#) or attend the [weekly webinar](#). Email [saferreturn@cpp.edu](mailto:saferreturn@cpp.edu) with questions and/or for additional guidance.
2. Recommend maintaining a supply of PPE, including higher grade masks, available in the classroom. Visit the [PPE page](#) on the Safer Return website for more info. Faculty can strongly recommend masking in their classrooms, labs, and/or offices, and also distribute masks.
3. Report positive case via the [COVID-19 Self-Report Form](#) and instruct students and employees accordingly.
4. If there is a classroom exposure and masking is required, the Safer Return Incident Investigation Team will inform all individuals. Faculty can forward the close contact notification to students and can restate the mandated public health requirements in class.
5. Faculty can ask students for documentation for absence(s) per previous practice.

# Additional Points of Note

1. University closely monitors campus and community conditions and works closely with public health officials to apply and communicate health and safety requirements.
2. Safer Return [Health and Safety Plan](#) evolves with changing conditions, requirements, and guidance. Visit Safer Return website for most up to date information.
3. [University Risk Response Plan](#) provides framework to respond to changing conditions.
4. Questions regarding the enforcement of the University's COVID-19 health and safety protocols should be directed as follows:  
*(Please note "COVID-19 Question" in the subject line)*
  - Faculty Members: Faculty Affairs at [avpfa@cpp.edu](mailto:avpfa@cpp.edu)
  - Staff: Employee Labor Relations at [elr@cpp.edu](mailto:elr@cpp.edu)
  - Students: Dean of Students: Jonathan Grady at [jgrady@cpp.edu](mailto:jgrady@cpp.edu)