

The logo for Cal Poly Pomona is a large, stylized arrow pointing to the right. It is composed of several overlapping triangular shapes in shades of blue, green, and yellow. The text "Cal Poly Pomona" is positioned to the left of the arrow.

**Cal Poly**  
Pomona

# **Provost's Report to the Academic Senate**

**Jennifer Brown, Ph.D.**

**Provost & Vice President for Academic Affairs**

**Wednesday, October 19, 2022**

# The Future of California and Higher Education

Joint Academic Affairs Council and Student Affairs Council Meeting

October 12, 2022

---

Lande Ajose, Vice President & Senior Fellow

Walter and Esther Hewlett Chair in Understanding California's Future



Olga Rodriguez, Senior Fellow & Director, HEC

Thomas and Marilyn Sutton Chair in Higher Education

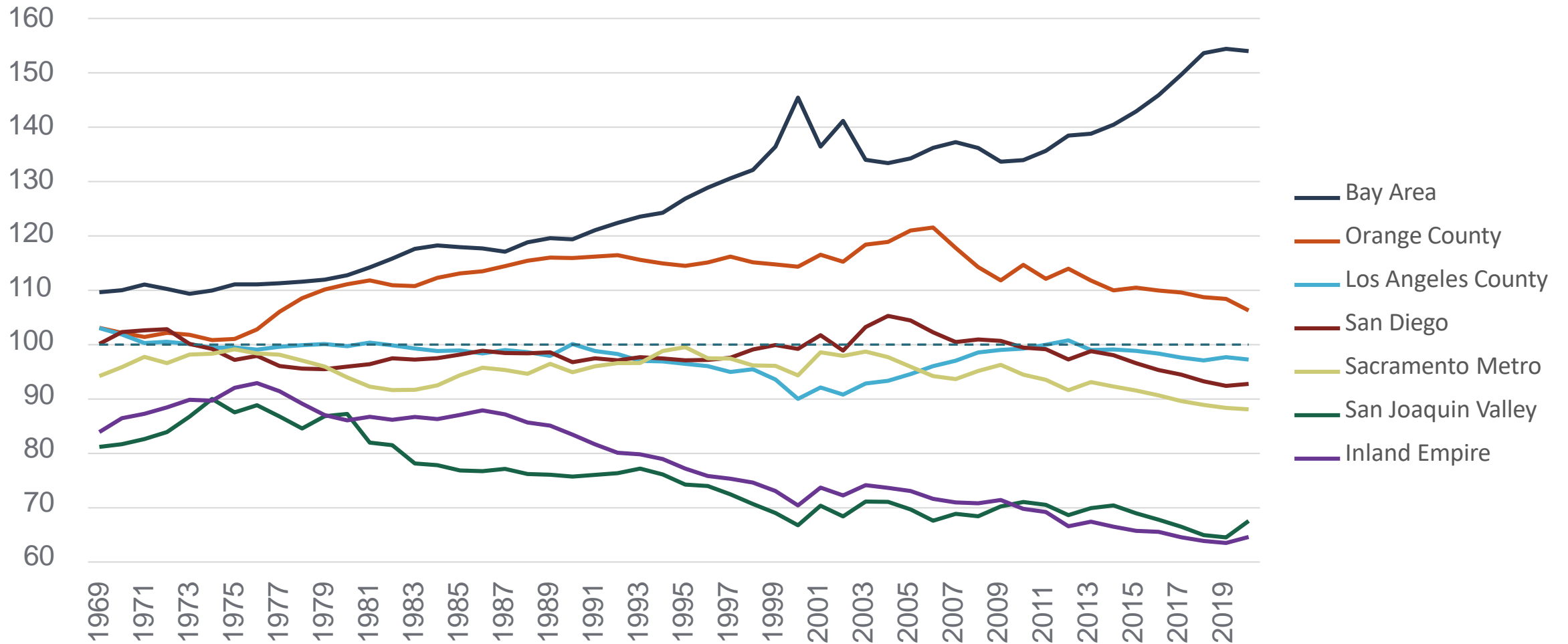


**PPIC**

PUBLIC POLICY  
INSTITUTE OF CALIFORNIA

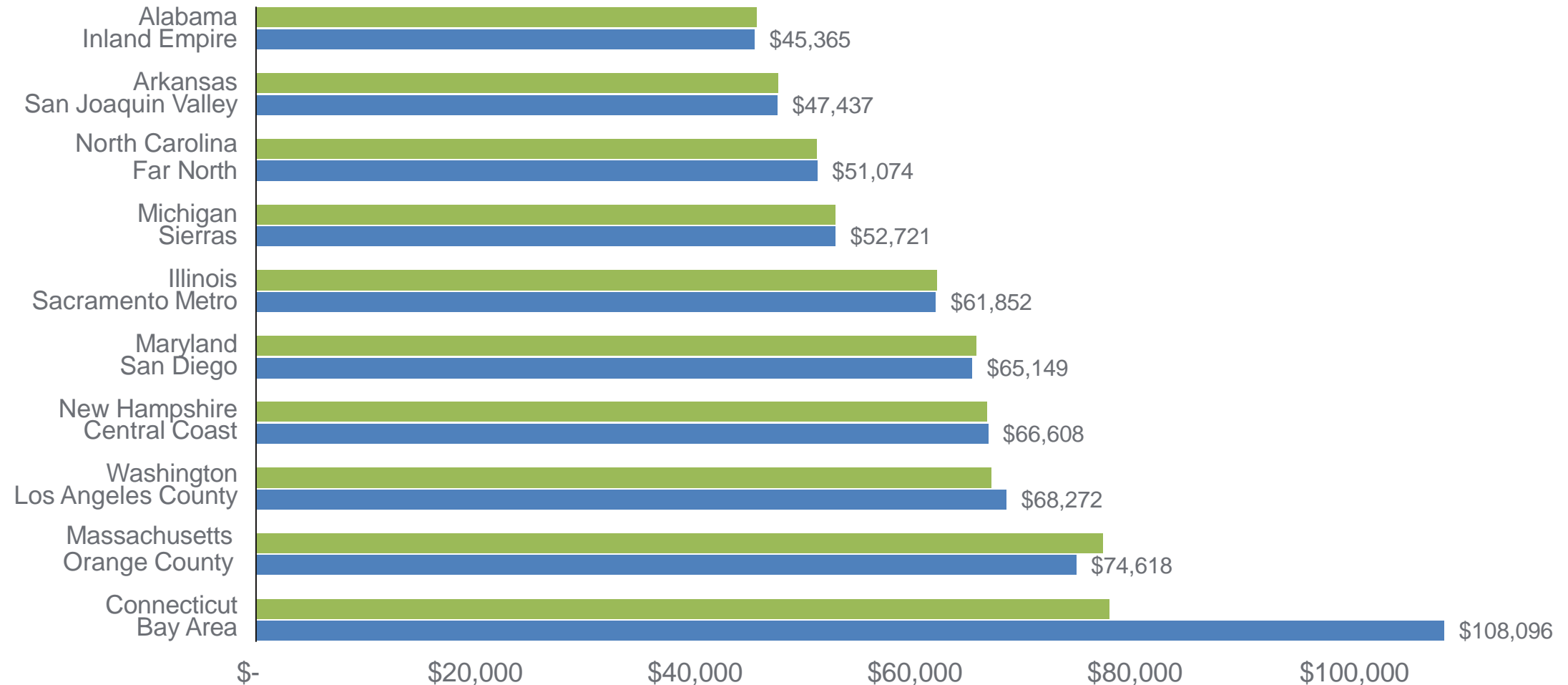
# California's regions are growing apart economically

Per capita income relative to state, 1969-2020 (state=100)



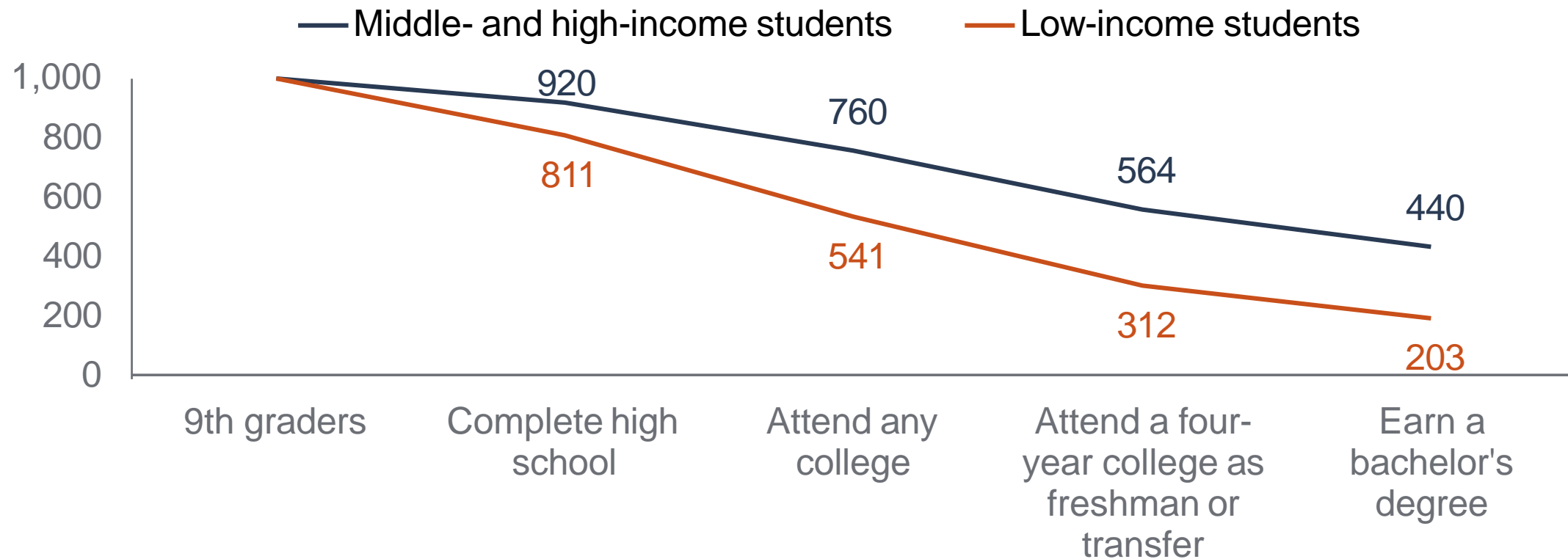
# State equivalents of California regions: From Alabama to far higher than Connecticut

Per capita income comparisons (2020)



# The Challenge: Most California 9th graders will not obtain a bachelor's degree

College pathway by income



# Please join Provost Brown

## Campus Conversation on Budget

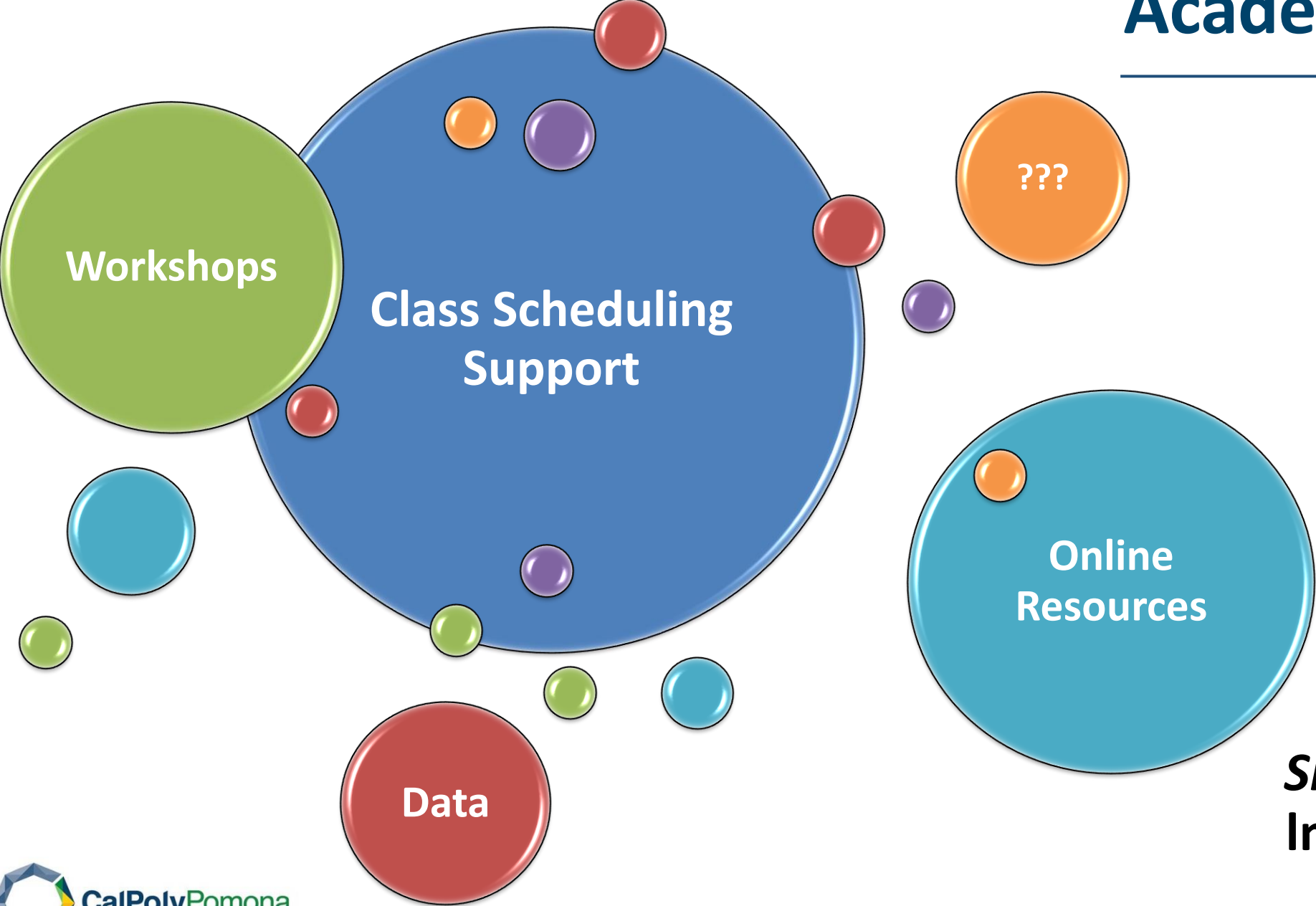
Wednesday, October 25

12 – 1 p.m.

via Zoom [853 498 771 39](https://calpoly.zoom.us/j/85349877139)

# Academic Programs

---



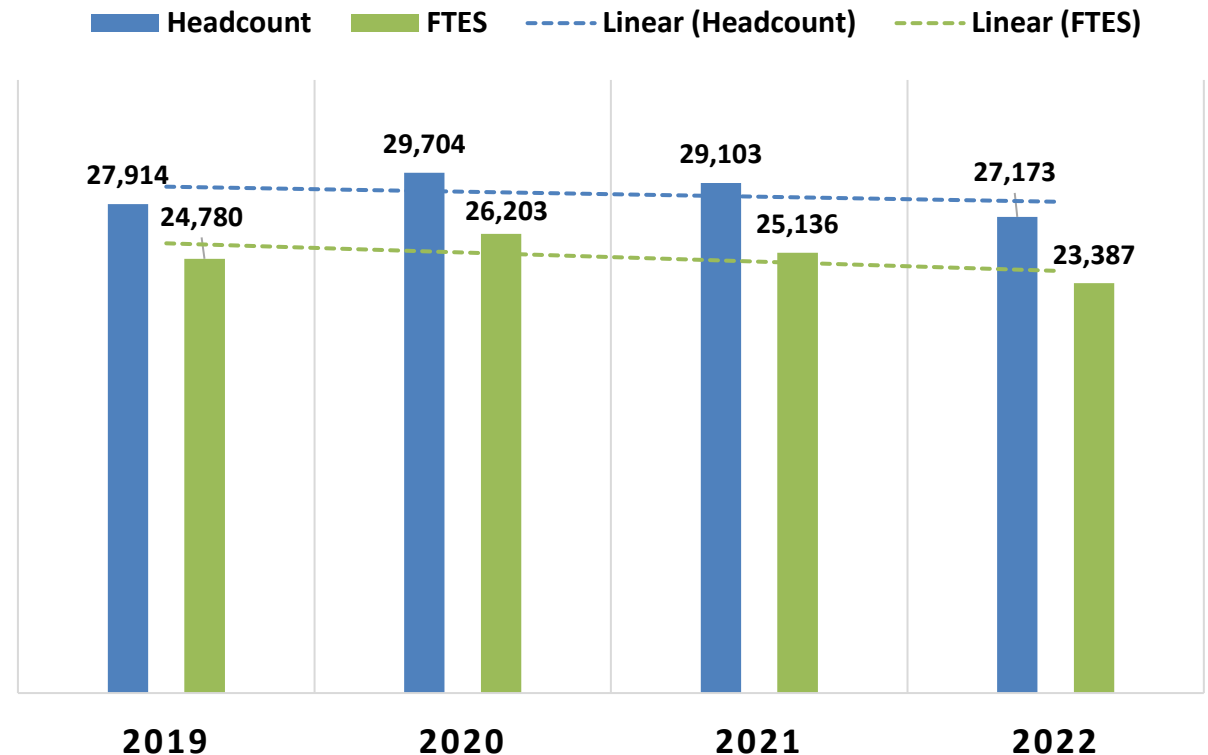
*Share your ideas:*  
**lmassa@cpp.edu**

# Enrollment Management & Services: Fall 2022 & Projected CY 2022-23

- CPP experienced years of steady enrollment growth just before and after semester conversion, reaching 25% over its CSU FTES funded target.
- Over the last two years, we have intentionally reduced our enrollment; this year we expect to be approximately 9% over our CSU FTES funded target of 19,653.

		CSU Resident Target	19,653
	Enrollment	Total FTES	Resident FTES
<b>Campus Goals</b>			
<b>CY 2022-23</b>	<b>26,492</b>	<b>22,354</b>	<b>21,722</b>
Summer 2022	762	229	228
<b>Fall 2022</b>	<b>27,173</b>	<b>23,387</b>	<b>22,800</b>
Projected Spring 2023	24,333	20,519	19,844
<b>Projected CY 2022-23</b>	<b>26,134</b>	<b>22,068</b>	<b>21,437</b>

FALL ENROLLMENT  
2019-2022





# Student Success, Equity, and Innovation

---

**Faculty Progress Reports: Second progress report window will open on October 20 until November 13.** Faculty can submit an early alert for students who may need support to successfully complete their course(s). More information is available at <https://www.cpp.edu/advising/progress-reports/>.

30% of our faculty submitted early alerts during the first window! Thank you!

## **6th Annual National Transfer Student Week on October 17-21**

ASI and PolyTransfer have partnered to bring a series of events that highlight and celebrate the transfer student population at Cal Poly Pomona. For a complete list of events,

visit: <https://www.cpp.edu/polytransfer/transfer-support/national-transfer-student-week.shtml>

View this video created by our Transfer Advantage Program (TAP) on “[What does it mean to be a transfer student.](#)”

## **Save the Date: 4th annual CPP First-Gen Week on November 7-10**

Cross-campus collaboration celebrating first-generation college students and graduates. Kick-off celebration, November 7, 11 am-4 pm at University Park.