



CalPoly
Pomona

Safer Return Update

Academic Senate
Wednesday, November 9, 2022

Frances Teves
Associate Vice President for Government and External Affairs/Coordinator, Safer Return

Situational Awareness

County	CDC Community Level (Low, Medium, High)	11/09/2022				
		New Cases Reported*	Weekly Cases per 100K (7-Day Average)*	Positivity Rate (7-Day Rate)*	Current Hospitalizations*	% of Population Fully Vaccinated (5 yrs. and older)**
Los Angeles	● Low	1,433***	6.9	4.35%***	440***	78.4%
Orange	● Low	156	4.8	4.7%	113	78.1%
San Bernardino	● Low	112	5.1	5.4%	80	63.8%
Riverside	● Low	117	4.7	5.8%	79	65.1%
Statewide		2,460	6.1	4.5%	1,700	78.6%

Primary Source: CDC COVID Data Tracker: COVID-19 Integrated County View (Accessed: November 9, 2022), CDPH Statewide Dashboard (Accessed: November 9, 2022), LACDPH Press Releases (Accessed: November 9, 2022)

*Current data accessed from the CDPH Statewide COVID-19 Dashboard

**Current data accessed by the CDC COVID Data Tracker

***Current data accessed LACDPH Press Releases, LAC COVID-19 Dashboard, and LACDPH Twitter

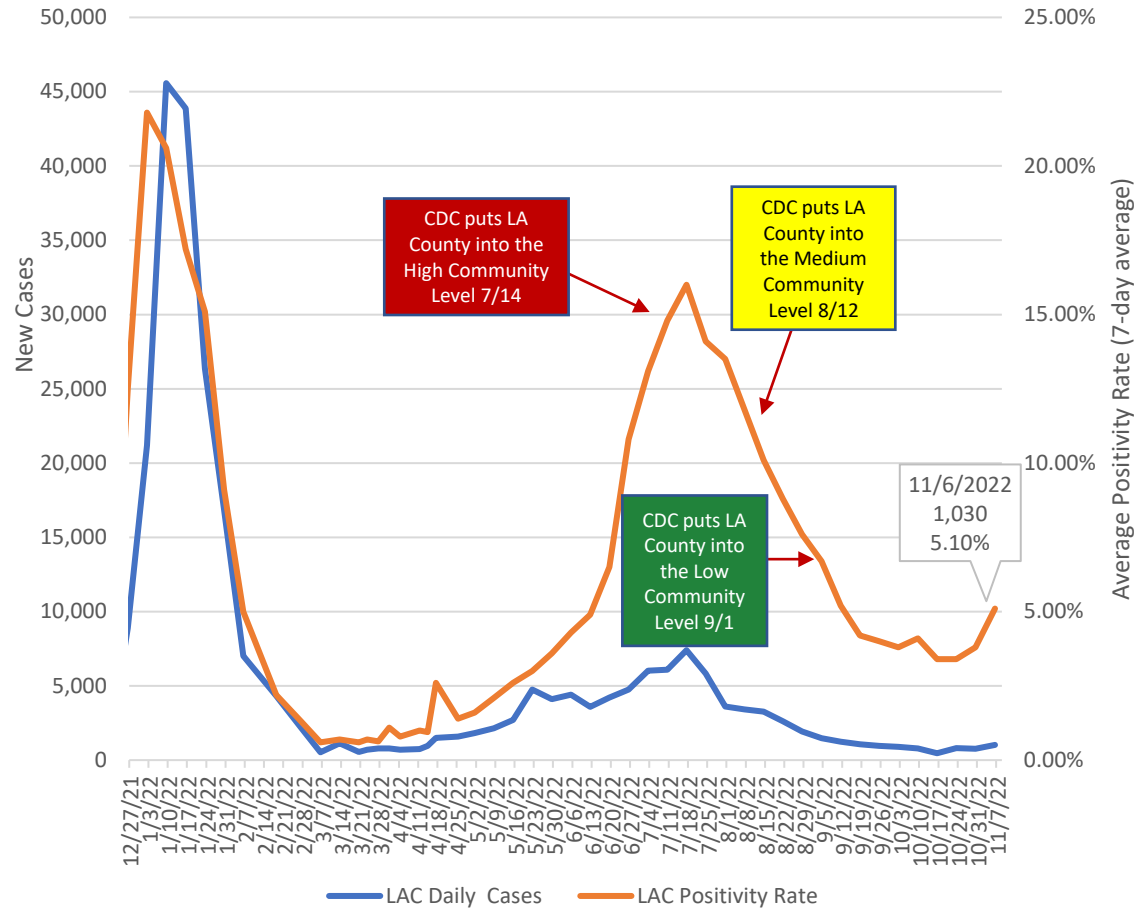
LA County Updates: Daily - CALIFORNIA All Updates: Tuesday's & Friday's - CDC Updates: Daily 8pm ET

Los Angeles County – Previous Data Points

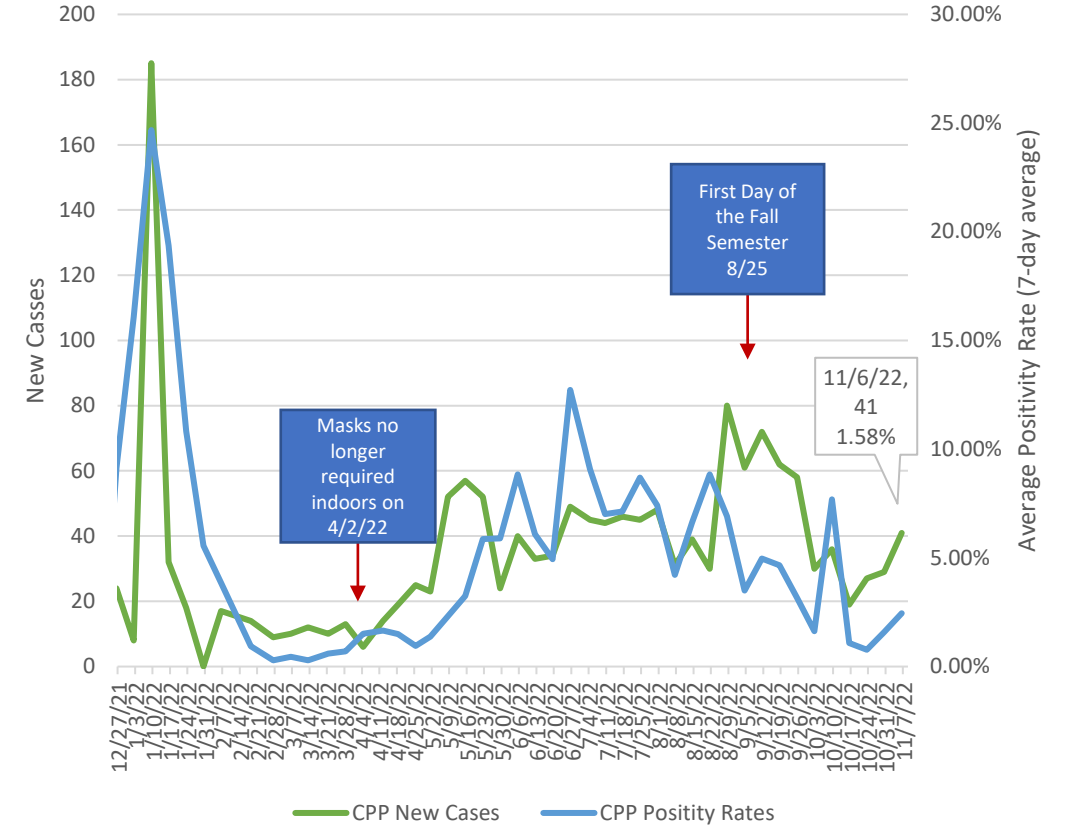
Date	Weekly Cases Per 100K (7-day average)	Positivity Rate	Hospital Admissions
1/11/2022	436.6	18.6%	3,912
1/12/2021	130.7	17.6%	7,906
7/11/2020	29.4	9.2%	2,056

New Cases and Positivity Rate in our Communities

Los Angeles County – New Cases and Positivity Rate



Cal Poly Pomona - New Cases and Positivity Rates



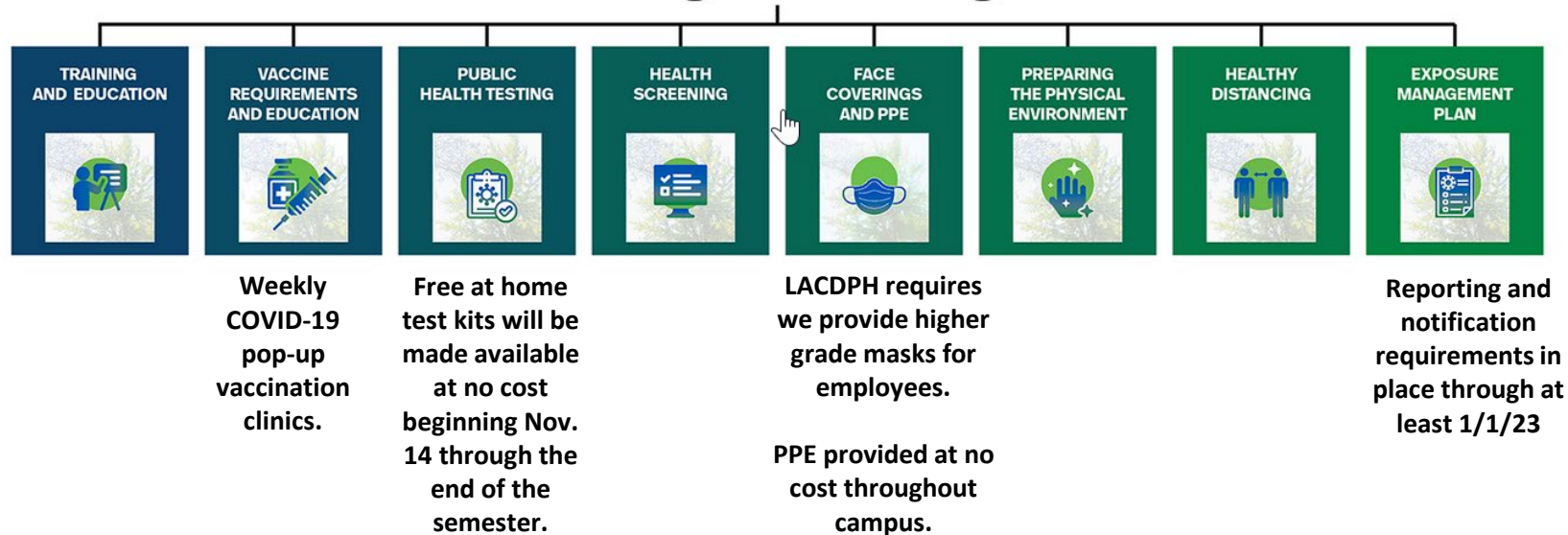
Safer Return COVID-19 Health and Safety Plan

The University's Safer Return COVID-19 Safety and Health Risk Mitigation plan reflects a multipronged approach reflecting three categories of risk mitigation:

- **Personal measures** – individual behaviors to protect ourselves and those around us
- **Administrative measures** - processes and policies that keep people safe
- **Engineering measures** - physical measures put in place to help keep our campus safe

The **eight-pronged** approach reflects *evolving* public health orders and state requirements, best practices and scientific recommendations, and local conditions. Each mitigation together serves as multiple layers to improve our ability to keep our campus and communities safe. *The plan helps assure a safer return to campus requiring individual actions and shared responsibilities.*

Risk Mitigation Strategies



Incident Investigation – What you need to know...

1. The Safer Return Incident Investigation Team must receive a COVID-19 Self-Report Form from the individual who has tested positive. The form is needed to notify close contacts.
2. Individuals who are positive, must isolate and not come to campus. The earliest they can return is on day 6 with a negative test and improving symptoms. They must wear a mask for 10 days.
3. Individuals who are **experiencing symptoms, should not come to campus** until they have received a negative test or cleared by the Incident Investigation Team. Report positive test results via the [COVID-19 Self-Report Form](#).
4. Individuals who have had a **close contact exposure and have no symptoms, can come to campus,** but must test within 3-5 days and wear a mask for 10 days. Report positive test results via the [COVID-19 Self-Report Form](#).
5. Reasons why you may not receive a close contact notification:
 - Individual was not on campus during the infectious period (48 hours of onset of symptoms or positive test).
 - Individual did not report the positive case in a timely manner or report it at all.
 - You are not identified as a close contact per the public health definition.
 - Incident Investigator is unable to reach the reported case.
6. Faculty can ask students to provide a doctor's note for any absences.

Safer Return Webinar – Thursday, November 17, 12 p.m. (U-Hour)

Join us for the webinar on Thursday, Nov. 17, as guest **Dr. Aaron Rubin (MD, FAAFP, FACSM)** provides updates on COVID-19 and how to keep you and your family safe during the holiday season. *Moderated by Brian Newman, Assistant Professor, Theatre and New Dance.*

Visit the [Virtual Town Hall webpage](#) for the schedule and Zoom links. You can also submit a question in advance via the [Safer Return Webinar Google Form](#).

- Dr. Rubin serves as a medical consultant to Safer Return
- Family medicine physician with Kaiser Permanente and lead for the COVID-19 Vax Hub at CPP
 - Serves as medical director for the Southern California Special Olympics
 - Served as program director for the Kaiser Permanente Sports Fellowship Medicine Program
 - Served as the head physician for the Big West Conference Basketball Championships



Points of Note

1. Campus continues to track conditions closely and work with Los Angeles Department of Public Health.
2. We will continue to rely on our institutional risk response plan to strengthen mitigation efforts as needed.
3. University is developing a framework to address emerging public health issues and threats.
4. Encourage continued vigilance as we enter the holidays and the winter cold and flu seasons, including staying home when ill, testing and masking.