

Climate Action Corp Presents:

Turf Removal Project



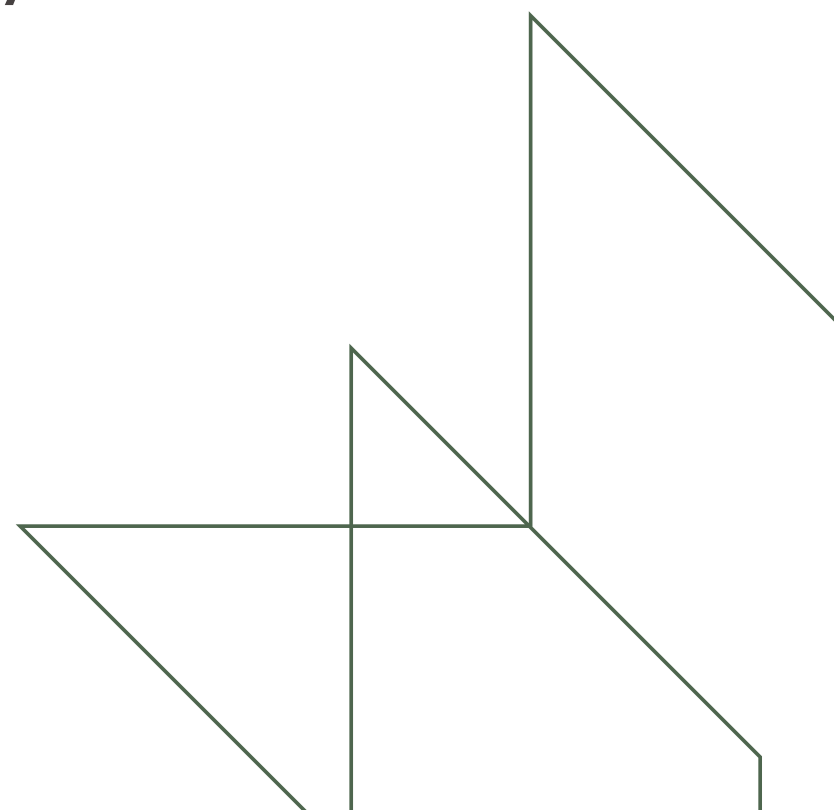
Sustainability Goals & Initiatives

- ▲ REDUCE WATER USAGE ON CAMPUS THROUGH NATIVE AND DROUGHT TOLERANT PLANTS
- ▲ MITIGATE POTENTIAL FIRE THREATS
- ▲ PROVIDE SOCIAL DISTANCE OUTDOOR SEATING FOR STAFF AND STUDENTS



Locations

- Facilities Building
- Horse Shoe Hill (S & N)
- CBA building
- MASA House
- Foundation Quad
- Library



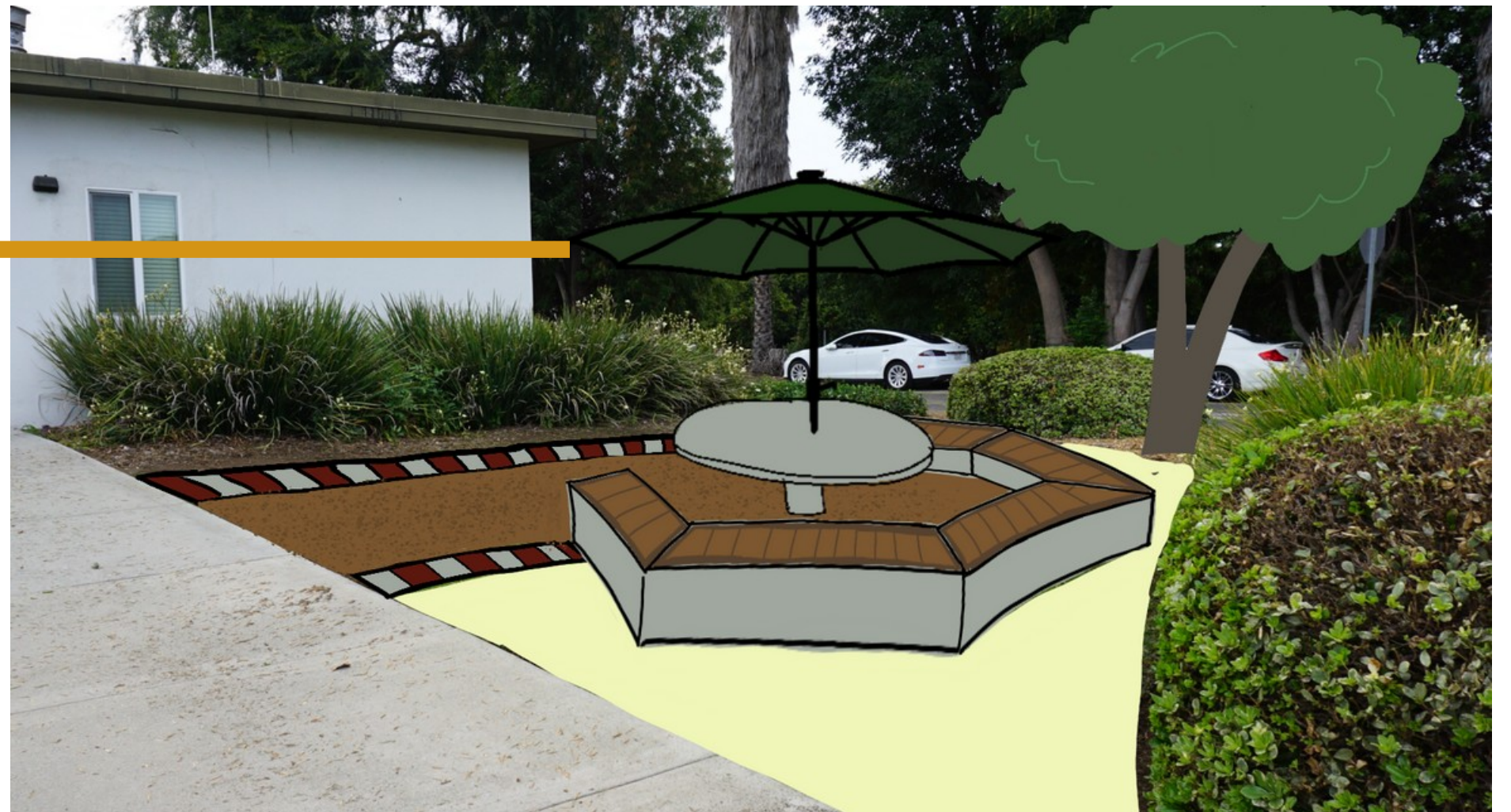
Site 1: Facilities Building

Estimated water mitigated:
Approx. 8,800 gallons/year

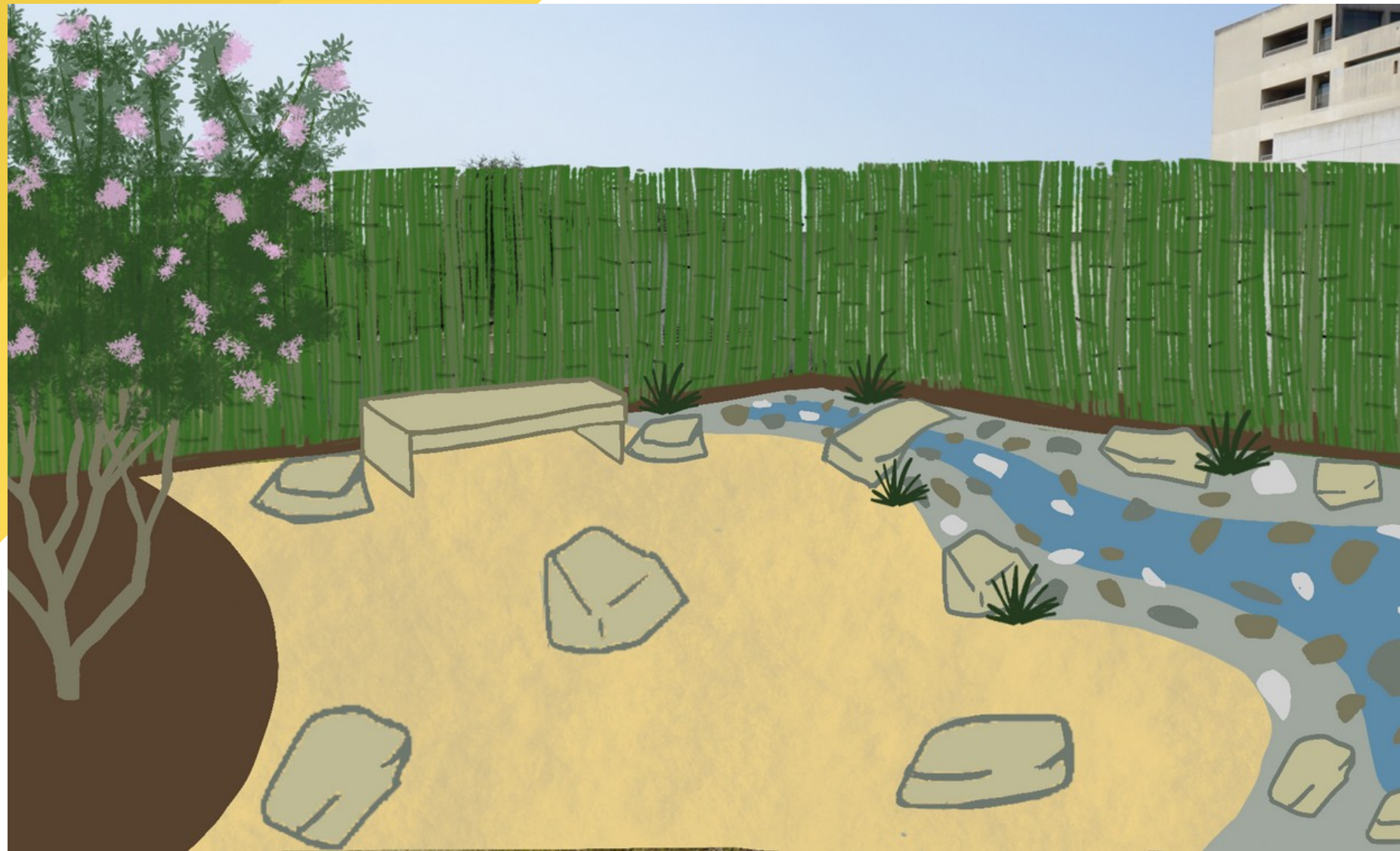
Proposed seating options:



SunBolt Solar Umbrella



Site 2: CBA Zen Garden



Estimated
water
mitigated:
*Approx. 110,000
gallons/year*

Site 3: HorseShoe Hill

Estimated water mitigated:
Approx. 338,800 gallons /year



Horseshoe Hill Cont.

Proposed seating options:



Back of Horseshoe Hill

Estimated water mitigated:
Approx. *176,000 gallons/year*



Horseshoe Hill Cont.



- Additional seating
- Pollinator Garden
- This leads to the students cultural building and walking trail



Site 4: MASA House

Estimated water mitigated:
Approx. 22,000 gallons/year



Site 5: Foundation Quad

Estimated water mitigated:
Approx. 225,000 gallons /year



Site 6: Library

Estimated water mitigated:
Approx. 159,000 gallons /year



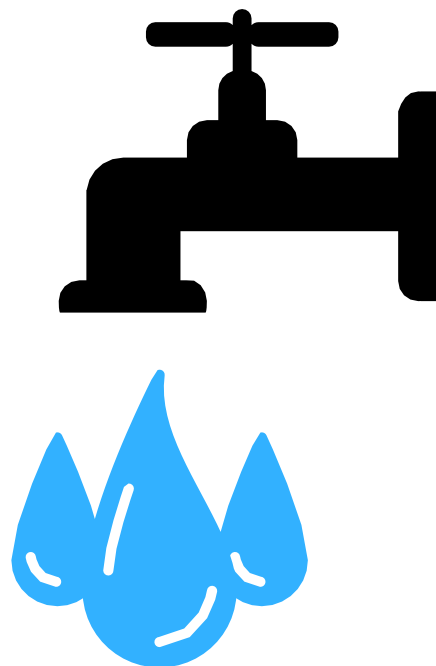
Mitigation Potential

Potential Water Decrease

typically 44 gallons/year is saved by removing a square foot of grass.

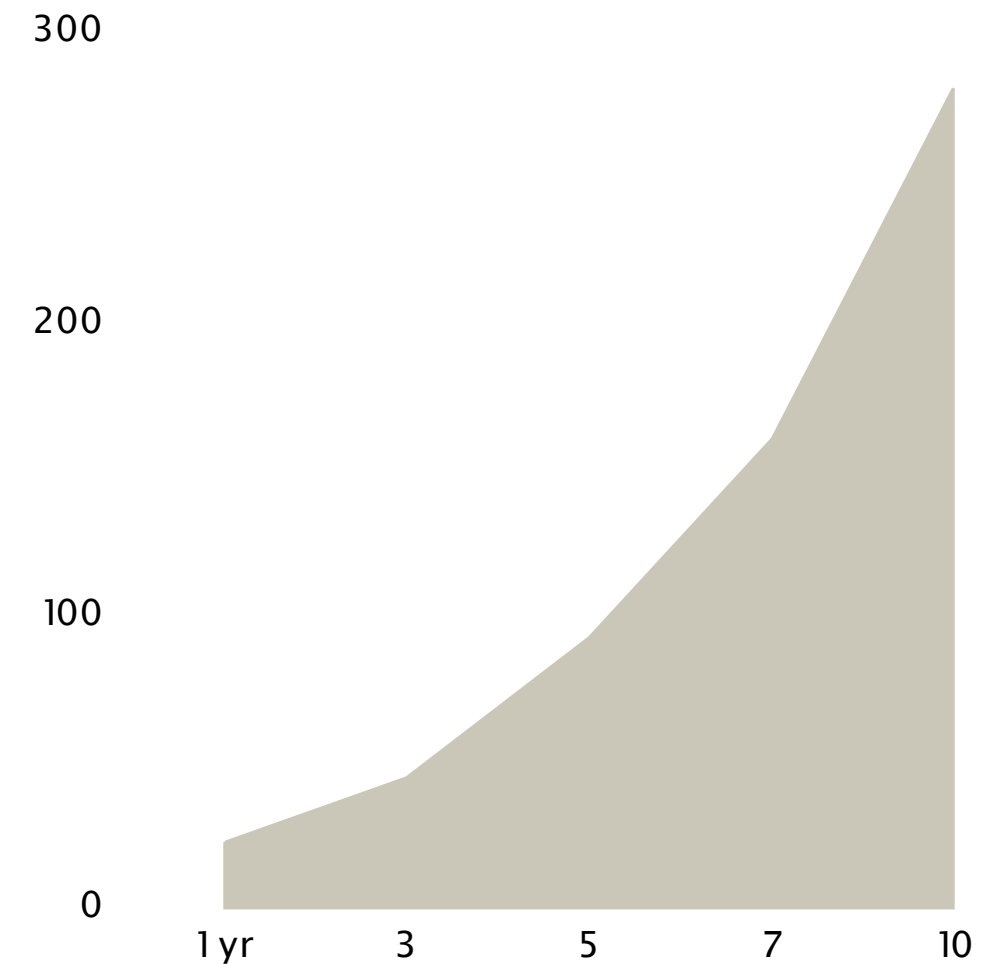
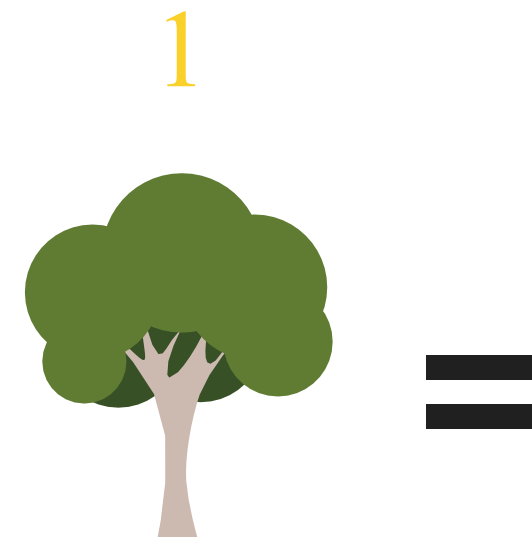
44 gallons /year \times 23,627 sq ft

ESTIMATED
= 1,039,600
GALLONS/YEAR



Estimated Carbon Sequestered

National Tree Benefit Calculator estimates that one 5'inch diameter Coastal Live Oak can reduce carbon emissions by 93 pounds in one year. If grown to 10 inches in diameter, it can sequester 281 pounds of CO2.



<http://www.treebenefits.com/calculator/index.cfm>

External Benefits

Outdoor Ammentaties

The approval of all six proposed sites will add ~70 additional outdoor seating options for students and faculty.

"Improvement in average Math test scores over a 7 month period was more than 3 times higher in the biophilic classroom setting when compared to a control classroom."

"32% of students claimed to experience less stress from biophilic learning spaces compared to 67% of students in a controlled classroom"

Mental and Physical Wellness

- Social distance seating
- Improved air quality
- Relaxing nature environment
- Walking Trail
- Low maintenance efficient landscape

Determan, J. (2019, October). The Impact of Biophilic Learning Spaces on Student Success. Birkbase.Org.

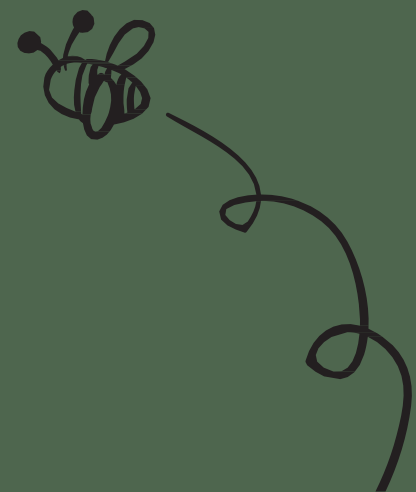


Biodiversity Index

Estimated planting over 50 native and drought tolerant trees, shrubs, flowers and grass will support:

~50+

BUTTERFLIES AND MOTHS



10 plants

TO SUPPORT THE BEE POPULATION

SUPPORTS

20+

SPECIES OF BIRDS



Plant Pallet List

Shrubs & Flowers

1. Bush
Monkey
Flower



1.



2.

2. Purple Sage

3. White Sage



3.

4. Black Sage



4.

5. Blue Field
Gilia



5.

Plant Pallet List Cont..

Trees & Succulents

- 6. Desert Willow
- 7. Coastal Live Oak
- 8. Engelmann Oak
- 9. Ray Hartman Ceanothus
- 10. Chaparral Yucca
- 11. Canyon Dudleya



6.



7.



8.



9.



10.



11.

Plant List Cont...

Ground Covers & Grasses



12.



13.



14.



15.



16.



17.

12. Common
Yarrow

13. Californi
a Fuchsia

14. Californi
a
Buckwheat

15. Purple
Needle Grass

16. Giant
Wildrye Grass

17. Pacific
Fescue Grass

Our Team



Monika Kamboures

Sustainability Coordinator



Deondra Alcantara

Climate Action Corp Fellow



April Rice

Climate Action Corp Fellow