

Major Key Signatures

Key signatures are symbols representing a scale/key. They tell us which accidentals are used throughout the composition. A key signature tells a musician the majority of notes that a composer has used in the music.

The chart below represents the key signatures for all 15 major keys/scales. They are arranged in the same order as the scales that you have just written. You will notice that the new accidental used in each key is the same as the new accidental that was put in each successive scale.



Key of: C G D A E

This block shows five musical staves in treble clef, each representing a major key signature. The first staff is C major (no sharps or flats). The second is G major (one sharp: F#). The third is D major (two sharps: F#, C#). The fourth is A major (three sharps: F#, C#, G#). The fifth is E major (four sharps: F#, C#, G#, D#).



Key of: B F# C#

This block shows three musical staves in treble clef. The first is B major (five sharps: F#, C#, G#, D#, A#). The second is F# major (six sharps: F#, C#, G#, D#, A#, E#). The third is C# major (seven sharps: F#, C#, G#, D#, A#, E#, B#).



Key of: C F Bb Eb Ab

This block shows five musical staves in treble clef. The first is C major (no sharps or flats). The second is F major (one flat: Bb). The third is Bb major (two flats: Bb, Eb). The fourth is Eb major (three flats: Bb, Eb, Ab). The fifth is Ab major (four flats: Bb, Eb, Ab, Db).



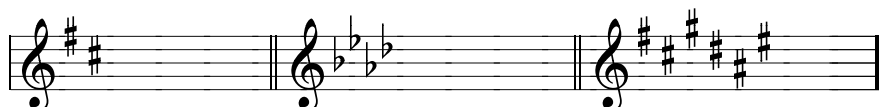
Key of: Db Gb Cb

This block shows three musical staves in treble clef. The first is Db major (five flats: Bb, Eb, Ab, Db, Gb). The second is Gb major (six flats: Bb, Eb, Ab, Db, Gb, Cb). The third is Cb major (seven flats: Bb, Eb, Ab, Db, Gb, Cb, Fb).

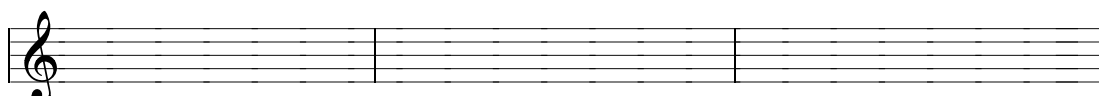
Key Signature Practice

Write in or identify the following major key signatures. Remember a simple way to identify key signatures with sharps is to take the last sharp and go up 1/2 step. For flats find the second to last flat which is the name of the key. To write the key signature for a sharp key signature go down from the name of the key 1/2 step and that sharp will be the last sharp in the sharp sequence. To write a key signature for a flat key begin putting in flats in the flat sequence until you get to the flat that names the key and then put in one more.

Identify these Key Signatures.



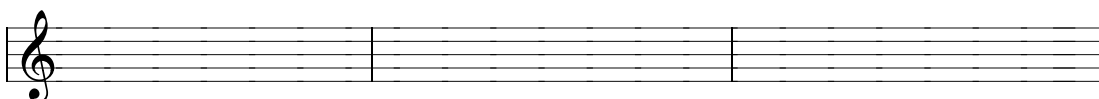
Write in these Key Signatures.



D

Ab

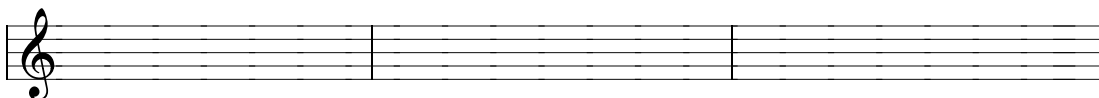
C#



Bb

Cb

F#



Db

F

Gb