

## More Information

### Department of Chemical & Materials Engineering

msemte@cpp.edu

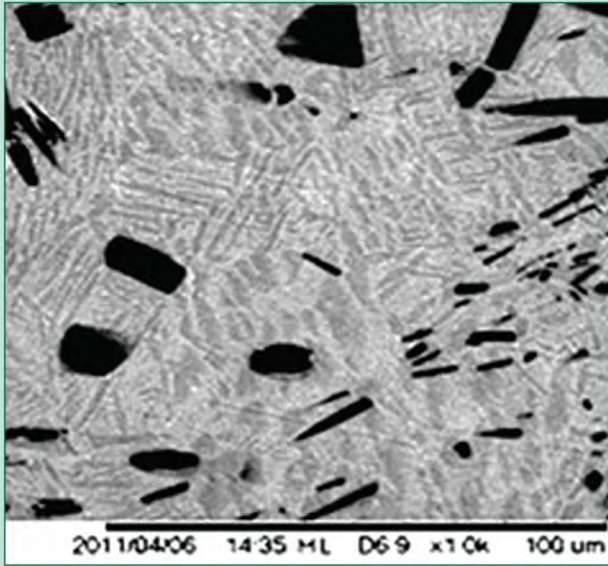
ph: 909.869.2626 • fax: 909.869.6920

## Graduate Studies Office

### Rebecca Rivas, Graduate Analyst

rrivas1@cpp.edu

ph: 909.869.3331



## Open University

**W**ant to take a class without formally enrolling in the master's program?

Open University gives you this option. You can sample the graduate program or take a class for professional development. All courses are available through this program. For more information visit:

[www.ceu.cpp.edu/courses/openuniv/](http://www.ceu.cpp.edu/courses/openuniv/)

Nonprofit  
Organization  
U.S. POSTAGE  
PAID  
Cal Poly Pomona

**CAL POLY POMONA**  
Chemical & Materials Engineering  
College of Engineering  
3801 West Temple Avenue  
Pomona, CA 91768



# MASTER OF SCIENCE

# Engineering with emphasis in Materials

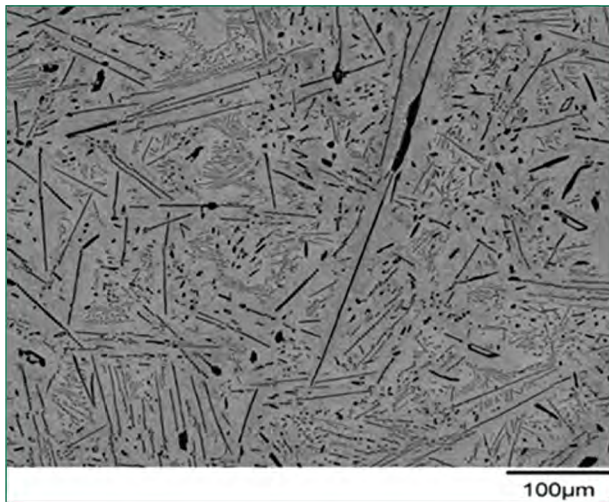


# CAL POLY POMONA



## About the Program

The Master of Science in Engineering with an Emphasis in Materials Engineering (MSE\_MTE) program at Cal Poly Pomona provides the student with a comprehensive preparation for advanced work in the engineering profession with a particular focus on materials science and engineering. It is designed to accept students with various undergraduate engineering backgrounds. The student completes a course of study individually tailored to their unique talents and professional goals. Another purpose of the program is to facilitate applied research in materials engineering.



## Admission Requirements

For admission to the MSE\_MTE emphasis, applicants must meet university criteria as specified in the Graduate Admissions section of the university catalog as well as the criteria below. Successful applicants will be admitted to the program either unconditionally or with conditions imposed on them. To receive unconditional admission, an applicant must satisfy these criteria:

- ▶ Hold a BS degree in an appropriate engineering discipline from a program accredited by the Accreditation Board for Engineering and Technology (ABET) and for which the accreditation was in effect at the time of award of the degree. The degree must have been granted within five years prior to the proposed beginning of the graduate program.
- ▶ Have a grade point average of at least 3.00 in all undergraduate upper division coursework in mathematics, science and engineering and, additionally, in all coursework attempted with graduate standing.

Conditional admission may be granted in cases in which the applicant's academic preparation for graduate study is such that the above criteria are not satisfied. In such cases, the applicant may be required to submit recent test scores of the Graduate Record Examination, letters of recommendation, or other documents attesting to their aptitude for graduate studies. Applicants who

do not satisfy the undergraduate degree criteria may be required to take a limited number of preparatory courses with no degree credit. When an applicant is admitted conditionally, and if these conditions are not satisfied in the stipulated time period, the student may be dis-enrolled.

## Curriculum

Candidates for the degree of MSE\_MTE emphasis, must satisfy the following requirements:

- ▶ Complete at least 45 units of graduate coursework with a GPA of 3.0 or higher of which (a) at least 30 units must be in the 500 and 600 level courses and (b) 8 units of Thesis or 2-4 units of Directed Study plus two units of the Master's Degree Project.
- ▶ Pass the Graduate Writing Test
- ▶ Develop, file, and complete a formal Program of Study with graduate advisor before completion of 12 units of course work.
- ▶ Complete a Master's Degree Project or Thesis.

## How to Apply

Applications are accepted online through the CSU Mentor website:

- ▶ [www.csumentor.edu](http://www.csumentor.edu)
- ▶ Indicate desired emphasis area in the application

A student may enter the program in any quarter.